

# Harlan J. Berk, Ltd.

(312) 609-0017

31 N. Clark Street • Chicago, Illinois 60602

Fax (312) 609-1309

## 65th BUY OR BID SALE

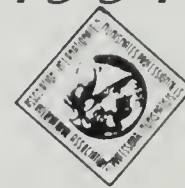
### The Closing Date is February 26, 1991



ALL COINS AND ANTIQUITIES  
GUARANTEED GENUINE

WE STILL CHARGE  
NO BUYERS FEES

VISA MASTERCARD AMERICAN EXPRESS



Harlan J. Berk, Ltd. has presented an innovation in antiquities and numismatics for some time now. The system is simple. When you want an antiquity or coin in the sale, just bid the estimated price by phone or mail. We will send you the antiquity or coin immediately. No waiting for the closing of the sale. Any and all antiquities or coins not sold before the closing date will be sent to the highest bidder on February 26, 1991.

EXAMPLE—You bid estimate on an item valued at \$100.00 and if your bid is the 1st to reach us, you will receive the item immediately. If on the other hand, you bid \$75.00 on the same item and are still the high bidder at the end of the sale, the item will be mailed to you on the closing date, February 26, 1991.

If you are ever in the area, stop in and see us! Of course, it's best to call first.

#### ROMAN EGYPT

AUGUSTUS; 27 BC-14 AD;

1. 80 Drachmae; Dattari-2. Portrait/Eagle. Fine . . . . . 200
2. Diobol; Dattari-16. Circular altar/Wreath. About Fine/VF . . . . . 100
3. Diobol; Dattari-43. Portrait/Oak wreath. VG/VF . . . . . 100
4. LIVIA; Wife of Augustus, died 29 AD, Diobol; Dat-61. Portrait/Athena Fine+/Good+ . . . . . 150
5. TIBERIUS; 14-37 AD, Tetradrachm; Dat-88. Tiberius/Augustus left, Year 21. VF+/EF . . . . . 250
6. CALIGULA; 37-41 AD, Dichalkon; Dat-112. Apis/Ibis, Year 2. Very good/Fine 100  
CLAUDIUS; 41-54 AD;
7. Tetradrachm; Dat-114/115. Claudius/Antonia. Year 2. About Fine/VF . . . 250
8. Tetradrachm; Dat-128. Claudius/Standing Messalina. Year 5. Fine . . . . 120
9. Diobol; Dat-131. Claudius/Victory. Year 5. Fine+ . . . . . 120
10. Diobol; Dat-141. Claudius/Winged caduceus and four ears of corn bound together. Year 11. Fine . . . . . 80
11. Obol; Dat-143. Claudius/Six sprigs of grain bound together. Year 2. Fine- . 50
12. Obol; Dat-147. Claudius/Hands clasped. Year 11. Pit at back of head. About EF . . . . . 140
13. Obol; Dat-151. Claudius/Right hand holding 2 sprigs and 3 poppies. Year 11. Fine/Fine+ . . . . . 60
14. Obol; Dat-165. Claudius/Hippopotamus, AYOKPA above, LB in exerge. Year 2. Fine/Fine+ . . . . . 125
- NERO; 54-68 AD;
15. Diobol; Dat-184. Nero/Augustus. Year 13. Fine+/Fine . . . . . 250
16. Diobol; Dat-185. Nero/Tiberius. Year 3. VF+/VF . . . . . 250
17. Tetradrachm; Dat-189. Nero/Agrippina. Year 5. Fine . . . . . 150
18. Tetradrachm; Dat-201. Nero/Nero seated. Year 4. Fine . . . . . 100
19. Tetradrachm; Dat-206. Nero/Apollo, quiver behind shoulder. Year 14. VF . 250
20. Tetradrachm; Dat-216. Nero/Demos Romaion holding cornucopia. Year 6. Fine+ . . . . . 100
21. Tetradrachm; Dat-217. Nero/Demeter. Year 3. About VF/Fine . . . . . 120
22. Tetradrachm; Dat-231. Nero/Eirene standing right holding winged caduceus and helmet, LE to right. Year 5. About VF/Fine+ . . . . . 140
23. Tetradrachm; Dat-234. Nero left, LIT before/Veiled bust of Hera Ageia right, APTEIA before. Year 13. VF/VF+ . . . . . 210
24. Tetradrachm; Dat-241. Nero/AUTO KPA Bust of Nilus right decorated with papyrus leaves, LIT= Year 13. Fine/VF . . . . . 250
25. Tetradrachm; Dat-244. Nero left, LIA before/Bust of Poseidon right, trident on left shoulder, \* before. Year 14. Fine/Fine+ . . . . . 150
26. Diobol; Dat-246. Nero/Bust of Roma right, before LIT. Year 13. About VF . 200
27. Tetradrachm; Dat-251. Nero/AYTO KPA Bust of Serapis right, LI before. Year 10. About EF/VF . . . . . 175
28. Tetradrachm; Dat-266. Nero/Agathodaemon; serpent erect right wearing crown, holding ear of corn and poppy, LA before. Year 4. VF/Fine+ . . . . . 165
29. Obol; Dat-278. Nero right/Roma left wearing helmet, dressed in short uniform holding in the right patera in the left shield and lance, LH before. Year 8. Fine 50  
GALBA; 68-69 AD;
30. Tetradrachm; Dat-298-9. Galba/Alexandria bust right, head draped in elephant skin. Year 1. VF+/Fine+ . . . . . 300
31. Tetradrachm; Dat-302. Galba, LA before/Veiled, laureate bust of Eirene right, caduceus above her right shoulder. Year 1. About VF/VF . . . . . 300
32. Tetradrachm; Dat-308. Galba LB before/Eleutheria standing left leaning on column, holding wreath and sceptre. Year 2. Fine . . . . . 200  
OTHO; 69 AD;
33. Tetradrachm; Dat-324. Otho, LA before/Alexandria bust right, head covered with elephant skin. Year 1. About Fine . . . . . 250
34. Tetradrachm; Dat-326. Otho right, LA before/Eleutheria standing left leaning on a column holding wreath and sceptre. Year 1. VF- . . . . . 450

35. Diobol; Dat-333. Otho right/Bust of Isis right, wearing crown of bulls horns with disc between, LA before. Year 1. Fine+ . . . . . 200  
VESPASIAN; 69-79 AD;
36. Tetradrachm; Dat-357. Vespasian right, LB before/Eirene standing left, holding caduceus right, two sprigs and two poppies left. Year 2. About VF . . . . 150
37. Tetradrachm; Dat-360. Vespasian right, LB before/Nike holding wreath and palm branch. Year 3. VF/Fine+ . . . . . 175
38. Tetradrachm; Dat-364. Vespasian right, LA before/Roma, cuirassed, standing left, wearing helmet holding spear right and shield left. Year 4. VF/Fine . . 175
39. Tetradrachm; Dat-385. Vespasian/Isis, LS before. Year 6. About Fine . . . . 80
40. Drachm; Dat-387. Vespasian right/Winged bust of Nike, LA before. Year 1. Fine+ . . . . . 325
41. Diobol; Dat-398. Vespasian right/Serapis bust right, LT before. Year 3. About VF . . . . . 200
- TITUS; 79-81 AD;
42. Tetradrachm; Dat-424. Titus right/Homonía sitting left upon throne, head veiled, holding an olive branch; the left wrapped in her robe, resting her left foot on a stool, LT before, OMO NOIA ABOVE. Year 3. Great portrait. VF . . . . . 250
43. Tetradrachm; Dat-426. Titus right/Serapis bust right, LB before. Year 2. Fine/VG . . . . . 80
- DOMITIAN; 81-96 AD;
44. Diobol; Dat-431. Domitian right/Domitía sitting left, hair gathered back. LIA before. Not in BMC, not in Milne. Year 11. Good Roman style. Fine/Fine+ . 200
45. Diobol; Dat-466. Domitian right/Alexandria, head covered with elephant skin. VF . . . . . 175
46. Diobol; Dat-585. Domitian right/Eagle right, ETOYΣ TPITOIY around. VF . 130  
NERVA; 96-98 AD;
47. Tetradrachm; Dat-631. Nerva right/Dikaioyne standing holding scale and cornucopia, in the field LA. Year 1. Fine+ . . . . . 240
48. Tetradrachm; Dat-633. Nerva right/Eirene standing left holding 2 sprigs of wheat and caduceus, in field LA. Year 1. Fine+ . . . . . 240
49. Tetradrachm; Dat-639. Nerva right/Eagle right, in field LA. Year 1. About VF/VG . . . . . 225
- TRAJAN; 98-117 AD;
50. Tetradrachm; Dat-682. Laureate head of Trajan right/Serapis bust right, in field LS. Year 6. Fine/VF . . . . . 100
51. Tetradrachm; Dat-692. Trajan right, star before/Bust of Zeus right, in field LI .  
Year 19. VF . . . . . 140
52. Tetradrachm; Dat-699v. Trajan right/Agathodaemon erect right holding before ear of corn, winged caduceus behind, in field LI Δ. Year 4. VF . . . . . 165
53. Tetradrachm; Dat-705. Trajan/Eagle standing right, in field L E. Year 5. VF . 130
54. Drachm; Dat-758. Trajan right/Emperor in quadriga right holding bay tree and sceptre, biga without Nike, L I Z before. Year 17. Not in BMC, Milne. Green patination. VG/ Fine+ . . . . . 150
55. Drachm; Dat-769. Trajan right/Emperor in quadriga drawn by elephants holding bay tree and sceptre with eagle beyond, in exerge LIE. Year 15. About VF 300
56. Drachm; Dat-797. Trajan/Naked Apollo standing left holding to right olive branch and sheet and to left the skin of a python? Round altar before, in field LI A. Year 11. Not in BMC, Milne. Bold About Fine . . . . . 145
57. Drachm; Dat-865. Trajan/rene and Homonia; in field LIS. Year 16. Fine+ . . 150
58. Drachm; Dat-882. Trajan/Euthenia right, sitting upon Androsphinx right, resting on her left elbow, LK in exerge. Year 20. Fine . . . . . 100
59. Drachm; Dat-980. Trajan/Nilus left seated upon a crocodile holding staff and cornucopia, LIA in exerge. Year 11. Fine style. Fine+/Fine . . . . . 140
60. Drachm; Dat-1147. Trajan/Tabernacle of Serapis. Year 15. Good+/About VF150  
HADRIAN; 117-138 AD;
61. Tetradrachm; Dat-1249. Hadrian/Sabine. Year 13. VF+ . . . . . 375
62. Tetradrachm; Dat-1264. Hadrian/Quadriga. Year 4. Fine+ . . . . . 125

63. Tetradrachm; Dat-1267. Hadrian/Alexandria and Hadrian. High relief. Year 15. VF . . . . .	175	124. Drachm; Dat-2750. Antoninus Pius/Nilus seated left close to crocodile. VG/Fine+ . . . . .	120
64. Tetradrachm; Dat-1275. Hadrian/Alexandria. Year 5. VF/Fine . . . . .	75	125. Drachm; Dat-2823. Antoninus Pius/Eagle with head of Serapis. Year 17. About VF . . . . .	200
65. Tetradrachm; Dat-1286. Hadrian/Ares. Fine . . . . .	80	126. Drachm; Dat-2907. Antoninus Pius/Alexandria in biga drawn by two serpents. Year 14. About VF . . . . .	180
66. Tetradrachm; Dat-1291. Hadrian/Ares. Year 8. VF . . . . .	80	127. Drachm; Dat-2941. Antoninus Pius/Zeus Ammon. Year 17. Fine/VF . . . . .	175
67. Tetradrachm; Dat-1301. Hadrian/Athena. Year 4. VF . . . . .	175	128. Drachm; Dat-2960. Antoninus Pius/Zodiac Venus in Taurus. Year 8. VG/About Fine . . . . .	275
68. Tetradrachm; Dat-1316. Hadrian/Canopus. Year 4. Fine+ . . . . .	200	129. Drachm; Dat-2967. Antoninus Pius/Zodiac Sun in Leo. Year 8. About Good/VG . . . . .	175
69. Tetradrachm; Dat-1327. Hadrian/Canopus. Porous. EF/VF . . . . .	225	130. Drachm; Dat-2994. Antoninus Pius/Perseus and Andromeda. Warm green and brown surfaces. Wetterstrom coin only Year 24. Extremely rare. About Good . . . . .	1000
70. Tetradrachm; Dat-1333. Hadrian/Demeter. Year 18. VF . . . . .	100	131. Drachm; Dat-3008. Antoninus Pius/Perystilium with 6 columns, jade green patination. Year 17. Fine+ . . . . .	140
71. Tetradrachm; Dat-1334. Hadrian/Demeter. Year 21. VF . . . . .	140	132. Tetradrachm; Dat-3065. Antoninus Pius/Serpent Agathodaemon erect right. Year 5. Fine+ . . . . .	75
72. Tetradrachm; Dat-1358. Hadrian/Dikaiosyne. VF . . . . .	135	MARCUS AURELIUS; 161-180 AD;	
73. Tetradrachm; Dat-1370. Hadrian/Elpis. Year 4. VF/Fine . . . . .	75	133. Tetradrachm; Dat-3177. Marcus Aurelius as Caesar/Serapis. Year 19. VG . . . . .	60
74. Tetradrachm; Dat-1384. Hadrian/Helios bust. Year 14. VF . . . . .	150	134. Drachm; Dat-3199. Marcus Aurelius as Caesar/Elpis. Year 5. VG . . . . .	100
75. Tetradrachm; Dat-1393. Hadrian/Homonia. Year 9. Porous Fine . . . . .	50	135. Tetradrachm; Dat-3395. Marcus Aurelius/Tyche seated left on throne. Year 9. Fine+ . . . . .	60
76. Tetradrachm; Dat-1434. Hadrian/Nilus reclining on crocodile. Year 17. VF+ . . . . .	165	136. Drachm; Dat-3447. Marcus Aurelius/Elpis. Year 4. Bold Fine . . . . .	150
77. Tetradrachm; Dat-1448. Hadrian/Phtah. Fine . . . . .	100	137. Drachm; Dat-3477 v. Marcus Aurelius/Moneta. Year 3. Thick red patination. VF . . . . .	175
78. Tetradrachm; Dat-1479. Hadrian/Serapis seated. Year 18. VF/VF+ . . . . .	145	138. Drachm; Dat-3495. Marcus Aurelius/Nilus reclining left. Year 6. Green patination. Fine+ . . . . .	135
79. Tetradrachm; Dat-1483. Hadrian/Bust of Selene right. Fine . . . . .	95	LUCIUS VERUS; 161-169 AD;	
80. Tetradrachm; Dat-1497. Hadrian/Tyche. Year 20. VF . . . . .	120	139. Tetradrachm; Dat-3645. Lucius Verus/Aphrodite. Year 5. Obverse scratches. Fine+/VG . . . . .	45
81. Tetradrachm; Dat-1498. Hadrian/Zeus. Year 2. Fine+ . . . . .	135	140. Drachm; Dat-3774. Lucius Verus/Serapis in quadriga to left. Year 6. Fine+ . . . . .	100
82. Tetradrachm; Dat-1525. Hadrian/Two right hands clasped. Year 13. Abt. VF . . . . .	110	141. Drachm; Dat-3786. Lucius Verus/Tyche. Year 8. VG+ . . . . .	80
83. Tetradrachm; Dat-1544. Hadrian/Serpent Agathodaemon erect right. Year 4. About VF . . . . .	130	COMMODUS; 177-192 AD;	
84. Hemidrachm; Dat-1581. Hadrian/Emperor standing. Year 15. Fine+ . . . . .	90	142. Tetradrachm; Dat-3852. Commodus/Emperor in quadriga. Year 21. Fine/VF . . . . .	65
85. Drachm; Dat-1594. Hadrian/Emperor in quadriga saluted by Alexandria. Year 14. Fine+ . . . . .	100	143. Tetradrachm; Dat-3854. Commodus/Emperor left crowned by Alexandria. Year 20. VF . . . . .	65
86. Drachm; Dat-1610. Hadrian/Emperor receiving Alexandria. Year 15. Fine+ . . . . .	100	144. Tetradrachm; Dat-3861. Commodus/Athena seated left on throne. Year 22. VF/Fine+ . . . . .	55
87. Drachm; Dat-1627. Hadrian/Athena Year 17. VF . . . . .	200	145. Tetradrachm; Dat-3864. Commodus/Elpis. Year 30. VF . . . . .	25
88. Drachm; Dat-1654. Hadrian/Canopus. VG/Fine . . . . .	300	146. Tetradrachm; Dat-3871. Commodus/Nike in quadriga. Year 25. About VF . . . . .	70
89. Obol; Dat-1664. Hadrian/Demeter right. Year 11. About VF/VF+ . . . . .	110	147. Tetradrachm; Dat-3881. Commodus/Bust of Serapis. Year 28. VF . . . . .	145
90. Drachm; Dat-1688. Hadrian/Elpis. Fine+ . . . . .	90	148. Tetradrachm; Dat-3884. Commodus/Serapis standing left. Year 30. VF . . . . .	70
91. Diobol; Dat-1720. Hadrian/Harpocrates. Year 14. VF/Fine+ . . . . .	100	149. Tetradrachm; Dat-3892. Commodus/Zeus right. Year 27. VF . . . . .	110
92. Drachm; Dat-1728v. Hadrian/Harpocrates. Fine/VF . . . . .	135	150. Tetradrachm; Dat-3894. Commodus//Zeus standing left. Year 22. VF . . . . .	60
93. Drachm; Dat-1759. Hadrian/Isis Pharia. Year 18. Fine/Fine+ . . . . .	140	151. Tetradrachm; Dat-3899. Commodus/Zeus Ammon. Year 23. VF/About VF+ . . . . .	150
94. Drachm; Dat-1765v. Hadrian/Isis Pharia and Pharos (Lighthouse). Year 17. VG/Fine . . . . .	150	ELAGABALUS; 218-222 AD;	
95. Drachm; Dat-1794. Hadrian/Nilus reclining. Year 16. VG/Fine . . . . .	100	152. Tetradrachm; Dat-4108. Elagabalus/Athena. Year 5. VF+/VF . . . . .	80
96. Drachm; Dat-1805. Hadrian//Nilus reclining. Fine/Fine+ . . . . .	135	153. Tetradrachm; Dat-4122. Elagabalus/Nike marching right. Year 3. Fine+ . . . . .	60
97. Drachm; Dat-1806. Hadrian/Nilus reclining on crocodile, cornucopia above. About VF/Fine+ . . . . .	145	154. Tetradrachm; Dat-4139. Elagabalus/Serapis bust right. Year 4. About VF . . . . .	100
98. Obol; Dat-1915. Hadrian/2 cornucopiae. About VF . . . . .	100	155. Tetradrachm; Dat-4146. Elagabalus/Zeus standing left. Year 2. About VF . . . . .	70
99. Hemidrachm; Dat-1933. Hadrian/Phare. Green and tan patination. VG . . . . .	100	156. Tetradrachm; Dat-4153. Elagabalus/Eagle. Year 4. VF . . . . .	75
100. Drachm; Dat-1997v. Hadrian/Female Sphinx facing left, LIH in exerge. Year 18. Fine/VF . . . . .	275	AQUILIA SEVERA; Wife of Elagabalus;	
AELIUS; 136-138 AD;		157. Tetradrachm; Dat-4176. Aquilia Severa/Athena standing left. Year 5. Fine/Fine+ . . . . .	175
101. Tetradrachm; Dat-2074. Aelius/Homonia. VF . . . . .	375	JULIA MAESA; Grandmother of Elagabalus;	
102. Drachm; Dat-2077. Aelius/Homonia. Fine/About VF . . . . .	225	158. Tetradrachm; Dat-4218. Julia Maesa/Dikaiosyne standing holding scale. Year 2. VF/VG . . . . .	65
ANTONINUS PIUS; 138-161 AD;		159. Tetradrachm; Dat-4223. Julia Maesa/Isis bust left. Year 3. Fine+VG . . . . .	60
103. Tetradrachm; Dat-2108. Antoninus Pius/Marcus Aurelius. Year 5. Fine+/VG . . . . .	100	SEVERUS ALEXANDER; 222-235 AD;	
104. Drachm; Dat-2119. Antoninus Pius/Marcus Aurelius on horseback. Year 3. Fine/ Fine+ . . . . .	135	160. Tetradrachm; Dat-4241. Severus Alexander/Athena standing left holding Nike. Year 5. About Fine . . . . .	60
105. Tetradrachm; Dat-2145. Antoninus Pius/Apollo. Rx similar to Caulonia Stater. Fine+ . . . . .	125	161. Tetradrachm; Dat-4271. Severus Alexander/Asklepios left. Year 13. Good Silver. About VF . . . . .	80
106. Tetradrachm; Dat-2156. Antoninus Pius/Askepios left. Year 15. Fine+ . . . . .	80	162. Tetradrachm; Dat-4286. Severus Alexander/Athena seated left holding Nike. Year 5. Good Silver. About VF . . . . .	70
107. Tetradrachm; Dat-2214. Antoninus Pius/Dikaiosyne seated on throne. Year 10. VF . . . . .	130	163. Tetradrachm; Dat-4298. Severus Alexander/Elpis. Year 13. VF+ . . . . .	95
108. Tetradrachm; Dat-2229v. Antoninus Pius/Elpis left. Year 45. VF . . . . .	100	164. Tetradrachm; Dat-4337. Severus Alexander/Nilus seated left. Year 12. EF . . . . .	135
109. Tetradrachm; Dat-2262. Antoninus Pius/Isis Pharia. Year 17. VF . . . . .	135	165. Tetradrachm; Dat-4346. Roman Style Severus Alexander/Serapis. Rough EF . . . . .	90
110. Tetradrachm; Dat-2333v. Antoninus Pius/Athena seated left. Year 14. VF . . . . .	80	166. Tetradrachm; Dat-4347. Severus Alexander//Serapis bust, pit in cheek on Obv. Year 4. VF+ . . . . .	120
111. Tetradrachm; Dat-2354. Antoninus Pius/Serapis bust right. Year 18. VF . . . . .	120	167. Tetradrachm; Dat-4357. Severus Alexander/Serapis standing left, Roman style. VF . . . . .	120
112. Tetradrachm. Dat-2382. Antoninus Pius/Tyche left. Year 4. VF . . . . .	70	168. Tetradrachm; Dat-4410. Severus Alexander/Eagle left looking back. Good Silver, high relief. Year 6. VF+ . . . . .	125
113. Tetradrachm; Dat-2390. Antoninus Pius/Tyche. Year 17. VF . . . . .	75		
114. Tetradrachm; Dat-2421. Antoninus Pius/Eagle. Year 7. VF . . . . .	100		
115. Drachm; Dat-2481. Antoninus Pius/ Athena facing left. Year 5. Fine/ Fine+ . . . . .	110		
116. Drachm; Dat-2542. Antoninus Pius/Elpis facing left. VF . . . . .	275		
117. Drachm; Dat-2612. Antoninus Pius/The Third Labor of Herakles: The Cerynean Hind. Extremely rare. VG/Fine+ . . . . .	250		
118. Drachm; Dat-2624. Antoninus Pius/Bust of Hermanubis right. Year 17. VG/Fine+ . . . . .	110		
119. Drachm; Dat-2604. Antoninus Pius/The Eleventh Labor of Herakles: The Apples of the Hesperides. VG/Fine . . . . .	450		
120. Drachm; Dat-2619. Antoninus Pius/The Tenth Labor of Herakles: The Cattle of Geryon. Year 5. Good . . . . .	200		
121. Drachm; Dat-2651. Antoninus Pius/Isis & Horus. VF/About VF . . . . .	250		
122. Drachm; Dat-2677. Antoninus Pius/Isis Pharia with Phare. Fine/Abt. VF . . . . .	275		
123. Drachm; Dat-2711v. Antoninus Pius//Nike crowning trophy. Year 45. Fine+/VF . . . . .	200		

169.	Tetradrachm; Dat-4414. Severus Alexander/Eagle right looking back. Year 13. About EF . . . . .	125	JULIA MAMAEA; Mother of Severus Alexander
170.	Tetradrachm; Dat-4476. Julia Mamaea/Athena seated left. Great portrait. Year 4. VF . . . . .	120	
171.	Tetradrachm; Dat-4484. Julia Mamaea/Elpis standing left. Year 13. EF/About EF . . . . .	125	
172.	Tetradrachm; Dat-4523. Julia Mamaea/Tyche standing left. Year 13. VF . . . . .	80	
173.	Tetradrachm; Dat-4530. Julia Mamaea/Zeus left. Year 13. VF . . . . .	80	
174.	Hemidrachm; Dat-4558. Julia Mamaea/Head of Zeus right. VG . . . . .	100	MAXIMINUS; 235-238 AD;
175.	Tetradrachm; Dat-4567. Maximinus/Athena. Good Silver. Year 4. VF . . . . .	60	
176.	Tetradrachm; Dat-4573. Maximinus/Bust of Helios right. Year 3. EF/Abt.EF100		
177.	Tetradrachm; Dat-4581. Maximinus/Nike right. Year 2. Good Silver.Abt..EF100		
178.	Tetradrachm; Dat-4591. Draped bust of Maximinus/Roma standing left. Year 1. About EF/VF . . . . .	65	
179.	Tetradrachm; Dat-4605. Maximinus/Zeus right. Year 2. VF . . . . .	85	MAXIMUS; 235-238 AD;
180.	Tetradrachm; Dat-4639. Maximus/Serapis left. Year 2. Fine+ . . . . .	100	GORDIAN I AFRICANUS; 238 AD;
181.	Tetradrachm; Dat-4659. Gordian I Africanus/Nike seated left. Year 1. VG 300		GORDIAN III; 238-244 AD;
182.	Tetradrachm; Dat-4702. Gordian III/Asklepios standing left. Year 1.Ab. VF 50		
183.	Tetradrachm; Dat-4711. Gordian III/Athena seated left. Year 3. Good Silver. VF . . . . .	65	
184.	Tetradrachm; Dat-4724. Gordian III/ Elpis marching left. Year 2. Great portrait. EF/VF . . . . .	80	TRANQUILLINA; Wife of Gordian III
185.	Tetradrachm; Dat-4822. Tranquillina/Homonia standing left. Year 5. VF/Fine 70		PHILIP I; 244-249 AD;
186.	Tetradrachm; Dat-4858. Philip I/Alexandria standing left holding bust of Serapis. Year 5. About EF . . . . .	85	
187.	Tetradrachm; Dat-4896. Philip I/Nike walking right carrying wreath. Year 5. About EF . . . . .	60	
188.	Tetradrachm; Dat-4924. Philip I/Tyche reclining . Year 3. Good Silver. VF 60		
189.	Tetradrachm; Dat-4933. Philip I/Eagle left head turned back. Year 1. About EF/EF . . . . .	75	
190.	Drachm; Dat-4945. Philip I/Homonia left. Good . . . . .	100	PHILIP II; 247-249 AD;
191.	Tetradrachm; Dat-5044. Philip II/Tyche seated left with cornucopia. Year 4. About EF . . . . .	80	
192.	Tetradrachm; Dat-5051. Philip II/Eagle right. Year 2. About EF . . . . .	60	
193.	Tetradrachm; Dat-5056. Philip II/Homonia left. Year 6. About EF . . . . .	60	TRAJAN DECIUS; 249-251 AD;
194.	Tetradrachm; Dat-5077. Trajan Decius/Eirene standing left. Year 2. Good Silver. VF . . . . .	80	
195.	Tetradrachm; Dat-5083. Trajan Decius/Nike right. Year 1. Good Silver. VF 80		
196.	Tetradrachm; Dat-5096. Trajan Decius/Eagle standing left, head turned back. Year 1. Good Silver. VF . . . . .	70	TREBONIANUS GALLUS; 251-253 AD;
197.	Tetradrachm; Dat-5110. Trebonianus Gallus/Alexandria standing left. Year 3. VF . . . . .	60	
198.	Tetradrachm; Dat-5118. Trebonianus Gallus/Serapis standing left. Year 3. Good Silver. About EF . . . . .	95	VOLUSIAN; 251-253 AD;
199.	Tetradrachm; Dat-5130. Volusian/Serapis standing left. Year 3. VF . . . . .	45	VALERIAN; 253-260 AD;
200.	Tetradrachm; Dat-5145. Valerian/Alexandria standing left holding bust of Serapis. Year 7. EF . . . . .	45	
201.	Tetradrachm; Dat-5146. Valerian/Athena seated left. Good Silver. About EF 70		
202.	Tetradrachm; Dat-5157. Valerian/Homonia standing left holding double cornucopiae. Good Planchet. Year 1. VF+ . . . . .	55	
203.	Tetradrachm; Dat-5184. Valerian/Eagle left looking back. Year 4. Good Silver. VF . . . . .	55	
204.	Tetradrachm; Dat-5186. Valerian/Eagle left, head turned back. Year 6. EF 65		GALLIENUS; 253-268 AD;
205.	Tetradrachm; Dat-5276. Gallienus/Eagle right looking back. Year 15. EF 50		
206.	Tetradrachm; Dat-5283. Gallienus/Eagle left looking back, palm branch behind. Year 14. EF . . . . .	55	
207.	Drachm; Dat-5292. Gallienus/Eirene standing left. Year 12. Good Planchet. Fine . . . . .	400	SALONINA; Wife of Gallienus;
208.	Tetradrachm; Dat-5298. Cornelia Salonina/Alexandria standing left holding bust of Serapis. Year 6. Good Silver. About EF . . . . .	100	
209.	Tetradrachm; Dat-5319. Salonina/Eagle right looking back. Year 4. EF 80		
210.	Tetradrachm; Dat-5322. Salonina/Eagle left looking back. Year 7. Good Silver. EF . . . . .	80	
211.	Drachm; Dat-5349. Salonina/Tyche. VG/Fine+ . . . . .	225	VALERIAN II; 253-255 AD;
212.	Tetradrachm; Dat-5369. Valerian II/Tyche seated left. Year 4. Good Silver. VF . . . . .	140	
213.	Tetradrachm; Dat-5373. Valerian II/Eagle left looking back. Year 4. VF/EF 90		CLAUDIUS II GOTHICUS; 268-270 AD
214.	Tetradrachm; Dat-5393. Claudius II Gothicus/Bust of Hermanibus right. Year 2. VF/Fine+ . . . . .	45	
215.	Tetradrachm; Dat-5399. Claudius II Gothicus/Nike walking left. Year 2. EF 45		QUINTILLUS; 270 AD;
216.	Tetradrachm; Dat-5420. Eagle right looking back holding wreath in beak. Year 1. EF . . . . .	135	AURELIAN; 270-275 AD;
217.	Tetradrachm; Dat-5427. Aurelian/Vabalathus. Year 5. VF+ . . . . .	50	SEVERINA; Wife of Aurelian;
218.	Tetradrachm; Dat-5506. Severina/Eagle left looking back. About EF . . . . .	60	TACITUS; 275-276 AD;
219.	Tetradrachm; Dat-5519. Tacitus/Eagle left looking back. Year 1. About EF 40		CARINUS; 283-285 AD;
220.	Tetradrachm; Dat-5584. Carinus/Elpis standing left. Year 2. EF . . . . .	45	
221.	Tetradrachm; Dat-5596. Carinus/Eagle with military standards. EF . . . . .	55	<b>GOLD</b>
222.	CELTIC RING MONEY; 1200-100 BC, 17.35g; Van Arsdell-1/1. . . . .	3500	
223.	LYDIA; 650-561 BC, Electrum 1/3 Stater, 4.7g; Seaby-3398. VF . . . . .	2200	
224.	IONIA, PHOCAIA; 6th-4th Century BC, Hekte, 2.48g; Lockett-2321, 1961 (this coin); Pozzi-2504, 1921 (this coin). Lot includes original ticket from Pozzi Collection. Good VF . . . . .	1500	
225.	IONIA, PHOKAIA; 400-330 BC, EL Phocaic 1/6 Stater, 2.54g; BMC-49, Boston-1920. Female in Sakkus and Laurel. About EF . . . . .	1100	
226.	IONIA, PHOKAIA; 400-330 BC, EL Phocaic 1/6 Stater, 2.52G; Boston-1930. Head of Demeter left. VF . . . . .	600	
227.	CARTHAGE , Issue of Hannibal; 218-202 BC, 3/4 Phoenician Drachm, 2.77g; Jenkins Group XVI #487-493. Only 57 recorded. Pit in center of Obv otherwise Good VF . . . . .	3000	
228.	MACEDONIA, PHILIP II; 359-336 BC, Gold Stater, 8.56g. EF . . . . .	4800	
229.	MACEDONIA, ALEXANDER III THE GREAT; 336-323 BC, Gold Stater; 8.5g. Ex jewelry. VF . . . . .	1350	
230.	ACHEMENID; 450-333 BC, Daric; 8.33g. Small planchet.Near Mint State 2100		
231.	JULIUS CAESAR, Died 44 BC, Aureus, Mint Gaul Cisalpina, 8.14g; Craw-490/2; X. Christies 10/18/85 #27; X. J. W. Walter Collection '90 #5. Circa 43 BC. VF/VF+ . . . . .	21,000	
232.	VITELLIUS; 69 AD, Aureus, 7.14g; C-71. VF . . . . .	6500	
233.	HONORIUS; 393-423 AD, Solidus, Ravenna Mint, 4.36g. About EF . . . . .	800	
234.	THEODOSIUS II; 402-450 AD, Solidus, Constantinople, 4.42g; Berk-9, Ratto-171. EF . . . . .	650	
235.	LEO I; 457-474 AD, Solidus, 4.31g; Berk-13. EF . . . . .	900	
236.	JUSTINIAN I; 527-565 AD, Solidus, Constantinople, 4.48g; Berk-44. Some Obv scratches in right field. EF . . . . .	275	
237.	JUSTIN II; 565-578 AD, Solidus, 4.43g; Ratto-753, Seaby-345. Near Mint State . . . . .	400	
238.	MAURICE; 582-602 AD, Solidus, 4.47g; Berk-82, Hahn-6. Mint State . . . . .	600	
239.	FOCAS; 602-610 AD, Solidus, Constantinople, 4.46g; Berk-96, DO-3. Circa Nov 23, 602- Jan 603 AD. Consular robes and pendilia. Near Mint State 1400		
240.	FOCAS; 602-610 AD, Solidus, Constantinople, 4.41g; Berk-101. EF . . . . .	285	
241.	HERACLIUS; 610-641 AD, Solidus, 4.49g; Berk-126, Hahn-48. Circa 638/9 AD. Near Mint State . . . . .	575	
242.	HERACLIUS; 610-641 AD, Solidus, 4.44g; Berk-123. EF . . . . .	450	
243.	CONSTANS II; 641-668 AD, Solidus, Constantinople, 4.41g; Berk-154, Hahn-31. Circa 662-667 AD. Mint State . . . . .	525	
244.	CONSTANTINE IV; 668-685 AD, Solidus, 4.37g; Berk-171, S-1155. Near Mint State . . . . .	375	
245.	LEO III; 717-741 AD , Tremissis, Constantinople, 1.42g; Berk-222, DO-15. Circa 720 AD. EF . . . . .	700	
246.	MICHAEL II; 820-829 AD, Solidus, Constantinople, 4.35g; Berk-241, DO-5a. Circa 821-829 AD. About EF . . . . .	1500	
247.	ROMANUS III; 1028-1034 AD, Solidus, Constantinople, 4.31g; Berk-296. Face of Virgin flat otherwise Choice EF . . . . .	400	
248.	ROMANUS III; 1025-1034 AD, Stamenon Nomisma, Constantinople, 4.36g; Berk-294, S-1820. Circa 1028/9 AD. EF . . . . .	600	
249.	ALEXIUS I; 1092-1118 AD, Hyperpyron, 4.17g; Berk-338, BN-3, Hendy PI 3,8; S-1912. Obv Bust of Christ/Alexius standing facing. VF+ . . . . .	275	
250.	CONSTANTINE X; 1059-1067 AD, Histamenon, 4.36g; Berk-312, DO-1b. EF . . . . .	400	
251.	ISAAC I; 1057-1059 AD, Stamenon Nomisma, 4.37g; Berk-313. EF . . . . .	900	
252.	NICEPHORUS III; 1078-1081 AD, EL Stamenon Nomisma, Constantinople, 4.41g; Berk-336. Flan crack at 12 and 3 o'clock. About EF . . . . .	250	
253.	JOHN II, COMNENUS; 1118-1143 AD, EL Aspron Trachy, 4.42g; S-1941. VF . . . . .	225	

254. JOHN III; 1222-1254 AD, Hyperpyron, Magnesia Mint, 4.33g; Berk-363. Usual flatness otherwise About EF . . . . .	225	302. THASOS; After 148 BC, Tetradrachm, 16.82g; Seaby-1759. VF . . . . .	600
255. JOHN III; 1222-1254 AD, Hyperpyron, Magnesia Mint, 4.08g; Berk-363. Usual Flatness otherwise About EF . . . . .	300	303. THASOS; 520-510 BC, Stater, 9.89g; BMC-3/1v, unpublished incuse, Seaby-1356v. The triangular incuse of this coin is totally unrecorded. VF . . . . .	2800
256. ANDRONICUS II, PALAEOLOGUS; 1282-1328 AD, Gold Hyperpyron, 4.03g; S-2150. Usual flatness otherwise about EF . . . . .	250	304. THRACE, LYSIMACHUS; 323-281 BC, Tetradrachm, 17.08g. Masterful portrait of Alexander. Near Mint State . . . . .	2500
257. MICHAEL VIII; 1261-1282 AD, Hyperpyron, Constantinople, 4.08g; Berk-364. Usual flatness otherwise About EF . . . . .	250	305. THRACE, LYSIMACHUS; 323-281 BC, Tetradrachm, 16.99g. Exquisite, highly unusual portrait of Alexander. Near Mint State . . . . .	2900
258. SULAYMAN I; 1520-1566, AV Sultan, 3.42g; MISR-926, Mitchiner-1253. VF . . . . .	120	306. LARISSA; 460-400 BC, Drachm, 5.88g. VF . . . . .	450
259. MURAD III; 1574-1595, AV Sultani, 3.35g; Sidrekips-982. VF . . . . .	120	307. LARISSA; 350-325 BC, Drachm, 6.06g. EF . . . . .	850
<b>GREEK SILVER</b>			
260. TINCOMMUS; 20 BC-5 AD, Silver Unit, 1.14g. VF . . . . .	250	307A. LARISSA; 350-325 BC, Drachm, 5.96g. Same as lot 307, artist-signed with an E to the left of head and K to right of head. Wonderful work of Greek art. About EF . . . . .	3000
261. EPILLUS; 5-10 AD, Silver Unit, 0.88g; M-108v, S-96v. EF . . . . .	250	308. THESSALIAN CONFEDERACY; 196-146 BC, Double Victoriatus with counter-stamp, 4.93g. About EF . . . . .	300
262. VERICA; 10-40 AD, Silver Unit, 1.09g; M-115, S-104, Van Arsdell-470/1. VF . . . . .	450	309. HISTAIA; 3rd Century BC, Tetrobol, 2.03g; S-2496. Near Mint State . . . . .	300
263. VERICA; 10-40 AD, Silver Unit, 1.04g; Van Arsdell-471/1. VF . . . . .	400	310. HISTAIA; 3rd Century BC, Tetrobol, 2.35g; S-2436. Near Mint State . . . . .	300
264. VERICA; 10-40 AD, Silver Unit, 1.17g; M-129, S-107. VF . . . . .	450	311. AKARNANIA, AKARNANIAN CONFEDERACY; 250-167 BC, Stater, 10.02g; S-2310. Rivergod Achelous/Apollo Aktios enthroned left. VF . . . . .	500
265. EPATICCOS; 25-35 AD, Silver Unit, 1.21g; M-263, S-113. VF . . . . .	200	312. BOEOTIA, THEBES; 379-371 BC, Stater, 11.99g; BMC-77. VF . . . . .	300
266. EPATICCOS; 25-35 AD, Silver Unit, 1.26 g; M-263, S-113. EF . . . . .	400	313. ATTIC ATHENS; 449-413 BC, Tetradrachm, 17.01g. EF . . . . .	1000
267. NEAPOLIS; 450-340 BC, Didrachm, 6.93g. VF . . . . .	325	313A. ATTIC ATHENS; 430-415 BC, Obol, 0.66g. EF/VF . . . . .	300
268. CALABRIA, TARENTUM; 380-228 BC, Tritemoria-3/4 Obol, 0.55g; Vlasto-1705. Rx Athena Promachus holding reign of horse head. Good VF . . . . .	275	314. ATTIC ATHENS; 393-300 BC, Tetradrachm, 17.21g; Seaby-2537. Off center. Good VF . . . . .	150
269. CALABRIA, TARENTUM; 302-228 BC, Obol, 0.54g; Vlasto-1643. Tripod to right. VF . . . . .	125	315. ATTIC ATHENS; 393-300 BC, Obol, 0.56g; S-2541. EF . . . . .	300
270. CALABRIA, TARENTUM; 272-235 BC, The Roman Alliance Didrachm, 6.44g; Vlasto-834/41. VF . . . . .	400	316. ATTIC ATHENS, NEW STYLE; 166-57 BC, Tetradrachm, 16.59g. VF . . . . .	450
271. LUCANIA, METAPONTUM; 530-510 BC, Stater, 7.95g; NOE-1d. Choice EF . . . . .	4500	316A. AEGINA LAND TURTLE; 445-431 BC, Stater, 12.23g; S-260c. Two Obv counterstamps otherwise high relief. About EF . . . . .	875
272. LUCANIA, METAPONTUM; 510-480 BC, Stater, 7.38g. VF . . . . .	585	317. CORINTHIAN STATER; ca. 350-306 BC, 8.09g. Rx Pegasus. Good VF . . . . .	225
273. LUCANIA, METAPONTUM; 212-207 BC, Stater, 7.6g; SNG II Graec. #393. Period of Hannibal in South Italy during 2nd Punic War. Extremely rare. Only 2 recorded. EF . . . . .	4000	318. LEUCUS; 350-333 BC, Stater, 8.48g. EF . . . . .	475
274. LUCANIA, THURIUM; 400-350 BC, Stater, 7.8g; Ashmolean I #1054, S-443. Signed "MOLOSSOS". VF . . . . .	800	319. ARGOS; 322-229 BC, Tetrobol, 2.52g. Off center. Fine . . . . .	80
275. LUCANIA, THURIUM; 350-281 BC, 1/6 Stater, 1.06g. Fine . . . . .	120	320. BITHYNIA, KALCHEDON; early 4th Century BC, Hemidrachm, 2.51g; S-3739. VF . . . . .	40
276. LUCANIA; VELIA; Obol, 0.65g; SNG COP-1522. Forepart of lion. Fine . . . . .	85	321. BITHYNIA, KALCHEDON; 350-280 BC, Hemidrachm, 2.44g. VF . . . . .	120
277. CROTON; 480-420 BC, Stater; 7.61g. VF . . . . .	245	322. ABDERA; 385-375 BC, Hemidrachm, 1.44g; S-1549. VF . . . . .	125
278. AKRAGAS; 413-406 BC, Hemidrachm, 1.9g; S-751. VF . . . . .	200	323. BLACK SEA, APOLLONIA PONTICA; 450-400 BC, Drachm, 3.41g; Seaby-1655. VF . . . . .	250
279. SICILY, GELA; 490-480 BC, Didrachm, 8.4g. Large diebreak on Rx. VF . . . . .	650	324. MYSIA CYZICUS; ca. 480 BC, Hemiobol, 0.36g; Rosen-522. VF . . . . .	20
280. SICILY, MESSANA; 480-461 BC, Tetradrachm, 17.37g; S-843. Large diebreak on Rx. VF . . . . .	750	325. LESBOS; 550-440 BC, Euboic Diobol, 1.17g; Weber-5587. Two boars heads facing/incuse. VF . . . . .	200
281. SICILY, SYRACUSE; 485-478 BC, Drachm, 4.18g; S-916. Fine . . . . .	300	326. IONIA PHOKAEA; 520-490 BC, Diobol, 1.17g; von Aulock-1813. Exquisite little archaic head. About EF . . . . .	350
282. SICULO PUNIC; 350-320 BC, Tetradrachm, 16.76g. Some flatness from strike. Near Mint State. . . . .	1400	327. PERGAMON; 190-133 BC, Cistophoric Tetradrachm, 11.52g. About Fine . . . . .	85
283. MACEDONIA, EION; ca. 500-437 BC, Trihemiobol, 0.93g; Pozzi-681. VF . . . . .	200	328. PERGAMON; Cistophoric Tetradrachm, 12.51g. About EF . . . . .	225
284. MACEDONIA; 550 BC, Drachm, 3.13g. Listed incorrectly in Seaby as Ephesus 3514. Fine . . . . .	145	329. MAGNESIA; 4th Century BC, Hemidrachm, 1.62g; S-4479. VF . . . . .	275
285. MACEDONIA, ALEXANDER I; 498-454 BC, Tetrobol, 2.31g; Grose-3277. VF . . . . .	450	330. IONIA, MILETOS; Late 6th Century BC, AR 1/12 Stater, 1.14g; S-3533. Lion forepart left, head turned back/Star incuse. EF . . . . .	90
286. MACEDONIA, ALEXANDER I; 495-454 BC, Heavy Tetrobol, 2.54g; S-1483. Fine . . . . .	150	331. IONIA, MILETOS; Late 6th Century BC, AR 1/12 Stater, 1.15g; S-3532. Lion forepart right, head turned back/Star incuse. EF . . . . .	85
287. MACEDONIA, PERDIKKAS II; 454-413 BC, Light Tetrobol, 2.10g; S-1488. Fine . . . . .	160	332. IONIA, MILETOS; 4th Century BC, Drachm, 2.52g; S-4502v. About EF . . . . .	165
288. THRACO-MACEDONIAN TRIBES, THE BISALTAI; Tetrobol, 2.25g; S-1321. Fine . . . . .	175	333. TEOS; 350 BC, Drachm, 2.96g; S-4581. Fine . . . . .	120
289. MACEDONIAN CITIES, TRAGILOS; ca. 450-410 BC, Hemiobol, 0.28g; DAN SNG-446, S-1470. Fine+ . . . . .	150	334. CHIOS; 420-350 BC, Drachm, 3.47g; S-4600. Fine+ . . . . .	200
290. MACEDONIAN CITIES, ACANTHUS; 424-380 BC, Tetrobol, 2.28g; S-1369. Fine+ . . . . .	100	335. CNIDUS; 480-450 BC, Drachm, 6.12g; BMC-18/86/13-14, Seaby-4834. Beautiful style. About EF . . . . .	1575
291. CHALCIDIAN LEAGUE, OLYNTHUS; 420-392 BC, Tetrobol, 2.33g; S-1425. Scratches on Rx otherwise VF . . . . .	145	336. CARIA, PIXODARUS; 340-334 BC, Drachm, 3.54g; S-4967. Fine . . . . .	125
292. MACEDONIA, ALEXANDER III THE GREAT; 336-323 BC, Tetradrachm, 17.22g. EF . . . . .	550	337. CIBYRA; 166-84 BC, Drachm, 2.69g; S-5126. VF/Fine . . . . .	100
293. MACEDONIA, ALEXANDER III THE GREAT; 336-323 BC, Tetradrachm, 17.05g. VF . . . . .	275	338. RHODES; 304-167 BC, Didrachm, 6.58g; S-5048. Mint State . . . . .	650
294. MACEDONIA, ALEXANDER III THE GREAT; 336-323 BC, Drachm, 4.15g. VF . . . . .	225	339. RHODES; 304-167 BC, Didrachm, 6.6g; S-5048. Mint State . . . . .	650
295. MACEDONIA, PHILIP III, ARRHIDAEUS; BC, Drachm, 3.47g. VF . . . . .	100	340. RHODIAN PERAIA; 3rd-2nd Century BC, Drachm, 2.12g; S-5090. Abt.VF . . . . .	240
296. MACEDONIA, ALEXANDER III THE GREAT; 336-323 BC, Drachm, 4.18g. Fine . . . . .	100	341. RHODIAN PERAIA; 3rd-2nd Century BC, Drachm, 1.60g; S-5090. Fine . . . . .	50
297. MACEDONIA, ALEXANDER III THE GREAT; 336-323 BC, Obol, 0.67g. About Fine . . . . .	100	342. CROESUS; 561-546 BC, Stater, 10.39g. About VF . . . . .	2100
298. MACEDONIA, PHILIP V; 220-179 BC, Tetradrachm, 17.07g; Pozzi-973. VF . . . . .	2500	343. CROESUS; 561-546 BC, Siglos, 5.39g. VF+ . . . . .	900
299. MACEDONIA, PHILIP V; 220-179 BC, Tetradrachm, 16.71g; Pozzi-973. Minor bump at 3 o'clock. VF . . . . .	1600	344. LYCIA, MITHRAPATA; ca. 39 BC, Diobol, 1.28g; BMC VIII #4. Lion scalp/Triskeles with stragalos. VF+ . . . . .	175
300. AMPHIPOLIS; 196-168 BC, Tetrobol, 2.22g; S-1383. VF . . . . .	275	345. LYCIA, KUPRLLI? 3rd quarter of 5th Century BC, Unpublished? Winged ibex left/Triskeles. VF+ . . . . .	600
301. MACEDONIA; 158-149 BC, Tetrobol, 1.94g; S-1387. VF . . . . .	90	346. PAMPHYLIA, ASPENDUS; 410-385 BC, Stater, 10.89g; S-5386. Fine . . . . .	200
		347. PAMPHYLIA, ASPENDUS; 400-300 BC, Stater, 10.41g. Symbol Rx "herm" in field. About VF . . . . .	675
		348. PAMPHYLIA, ASPENDUS; 300-190 BC, 9.9g; DAN SNG-238. Rx double-struck. VF . . . . .	275
		349. PAMPHYLIA, SIDE; 370-360 BC; BMC-14, DAN SNG-322, Pozzi-2795 . VF . . . . .	600
		349A. PAMPHYLIA, SIDE; 370-360 BC, 10.26g; BMC-15, Pozzi-2796. VF . . . . .	600
		350. CILICIA, MALLUS; ca. 525 BC, Stater, 11.50g; Babelon I #900; Fine . . . . .	400
		351. CILICIA, ISSUS, TIRIBAZES; 386-380 BC, Stater, 10.71g; Bab-576 pl 107/14, Leu 1962 #322. Less than 5 recorded. Fine+ . . . . .	600
		352. CILICIA, MALLUS, TIRIBAZUS; 386-380 BC, Stater, 10.68g; SNG von Aulock-5712. Obv Baal/Ahura Mazda. Some areas of flat striking otherwise EF . . . . .	1000
		353. CILICIA, MALLUS; 385-333 BC, Stater, 10.68g; Weber-7568. VF . . . . .	500

354.	CILICIA, MALLUS; 375-360 BC, Stater, 10.28g; S-5565, Weber-7567. VF+850	
354A.	CILICIA, NAGIDUS; 420-400 BC, Stater; Fitzwilliam-5268, SNG Levante-1var. Off center VF	400
354B.	CILICIA, NAGIDUS; 410-390 BC, Stater; DAN SNG-174. Off Center, off flan. VF	400
355.	CILICIA, NAGIDUS; 400-380 BC, Persic Stater, 10.50g; Grose-9070. Dionysos/Aphrodite. Struck on small planchet as usual for this issue. About EF	1250
356.	CILICIA, NAGIDUS; 375-370 BC, Stater, 10.71g; DAN SNG-178. VF	600
356A.	CILICIA, NAGIDUS; 370-365 BC, Stater; DAN SNG-179. VF+	750
356B.	CILICIA, NAGIDUS; 363-358 BC; Stater, DAN SNG-180. Fine+	400
357.	CILICIA, TARSUS; 450-380 BC, Stater, 10.31g; BMC pl XXVIII #4. Obv struck with totally corroded die but Rx extremely artistic. About EF	1000
358.	CILICIA, TARSUS; 450-380 BC, Stater, 10.45g; BMC pl XXVIII #6. Hoplite wearing Corinthian helmet with spear and shield. Fine	400
359.	CILICIA, TARSUS; 450-386 BC, Stater, 10.28g; BMC pl XXVIII #9, Grose-9092. Test cut on Rx. VF/About EF	800
360.	CILICIA, TARSUS, TIRIBAZUS; 386-380 BC, Stater, 10.19g; Berry SNG-1281, but Nagidus as their legend corroded. 2nd recorded. About EF	2000
361.	CILICIA, TARSUS; 379-374 BC, 10.20g; Seaby-5639. Fine+	375
362.	CILICIA, TARSUS; 331-306 BC, Stater, 15.77g. Kantharos in field. Unpublished symbol. Fine+	400
363.	SOLI; 386-380 BC, Stater, 10.56g; BMC-27; Babelon II-563. VF/Fine	600
364.	CILICIA, ISSUS; 386-380 BC, Stater, 10.41g; Berry SNG-1273, Seaby-5554. Baal/Ahura Mazda with body terminating in solar disk holding poppy and wreath. VF	575
365.	CYPRESS, CITIUM, AZBAAL; 449-425 BC, 10.97g; S-5723. Fine	400
366.	SYRIA, ANTIOCHUS; 164-162 BC, Tetradrachm, 16.44g; BMC-5. EF	1450
367.	DEMETRIOS I SOTER; 162-150 BC, Tetradrachm, 16.40g; S-7015. High relief portrait. VF+	675
368.	SELEUCUS VI EPIPHANES NICATOR; 95-94 BC, Tetradrachm, 15.63g; S-7177; Houghton 535-538. Cilicia: Seleucia ad Calycadnum. VF	550
369.	SELEUCUS VI EPIPHANES NICATOR; 95-94 BC, Tetradrachm, 15.24g; S-7177; Houghton 535-538. Cilicia: Seleucia ad Calycadnum. Fine	400
370.	ARADOS; 68-67 BC, Tetradrachm, 15.22g; Seaby-5991. Good VF	300
371.	SIDON; 384-370 BC, Tetrashekel, 28.34g; Seaby-5934. Wonderful sharp galley and waterlines. EF/VF	1500
372.	SIDON; 4th Century BC, 1/8 Shekel, 0.62g; S-5940v. About EF	75
373.	TYRE; 360-332 BC, Attic Didrachm, 8.88g; S-5914. Melqarth riding hippocamp/Owl carrying crook and flail. VF	300
374.	TYRE; After 126 BC, Shekel, 14.32g. Near Mint State	850
375.	BYBLOS, AZBAAL; 350 BC, Dishekel, 13.25g; BMC-4 pl XI/12, Seaby-6011. EF	1500
375A.	PHOENICIA, BYBLOS; 4th Century BC, 1/8 Shekel, 0.75g; S-6010. EF	75
375B.	PHOENICIA, BYBLOS; 4th Century BC, 1/8 Shekel, 0.69g; S-6010. EF	100
376.	INDO GREEK, MENANDER; ca. 160-145 BC, Drachm, 2.42g; Mitchiner ACW-1788. Javelin-thruster/Pallas right. VF	100
377.	INDO GREEK, MENANDER; 160-145 BC, Drachm, 2.42g; Mitchiner 1768-1772. EF	120
378.	BACTRIA, MENANDER; 160-145 BC, Drachm, 2.42g; S-7600. About EF	100
379.	PERSIA, ACHAEMENID EMPIRE; 450-330 BC, Siglos, 5.44g; S-4682. Fine	60
380.	PERSIA, ACHAEMENID EMPIRE; 486-330 BC, 1/6 Siglos, 1.21g. Extremely rare. Fine	1000
381.	PERSIA, ACHAEMENID EMPIRE; 486-330 BC, 1/6 Siglos, 1.25g. Extremely rare. Fine	1000
382.	PERSIA, ACHAEMENID EMPIRE; 486-330 BC, 1/12 Siglos, 0.59g. Extremely rare. Fine	700
383.	CARTHAGE; 220-210 BC, 1/2 Shekel, 3.41g. Second Punic War. VF	275
384.	NUMIDIA, HIEMPSAL II; 106-60 BC, Quinarius, 1.63g; S-6603. About VF	175
385.	KINGDOM OF PERSIS, DARIUS I; 2nd Century BC, 3.39g; S-6196. Porous Fine	70
386.	EGYPT, PTOLEMY XII NEOS DIONYSOS; 80-51 BC, Tetradrachm, 13.67g; DAN SNG-377. Circa 80/79 BC. VF+	200
387.	EGYPT, CLEOPATRA VII; 51-30 BC, Tetradrachm, 14.50g; DAN SNG-400, Sv-1819. Circa 49/48 BC. Fine	135
388.	ANONYMOUS VICTORIATUS; After 211 BC; SSI-9, SYD-83. Jupiter/Victory crowning trophy. EF	140
<b>ROMAN REPUBLIC</b>		
389.	L. CUPIENNIUS; 145-138 BC, Denarius; BMC-850. VF	65
390.	L. F. PHILUS; 119 BC, Denarius; Furia-18, Craw-281/1, SYD-529. VF	110
391.	CN. BLASIO; 112-111 BC, Denarius; Craw-296, SYD-561. Helmeted head/Jupiter standing with Juno & Minerva. VF	110
392.	APPIUS CLAUDIUS PULCHER, T. MANLIUS MANCINUS, Q. URBINIUS; 111-110 BC, Denarius; Craw-299/1a, SYD-570. About EF	100
393.	C. MALLEOLUS; 96 BC, Denarius; Craw-335/lb, SYD-614. Head of Apollo/Roma being crowned. VF	110
394.	D. SILANUS L. F.; 91 BC, Denarius; Craw-337/3, SYD-646. Head of Roma/Victory in biga. VF+	75
395.	Q. TITIUS; 90 BC, Denarius; Craw-341/1, SYD-691. Fine+	40
396.	C. CENSORIUS; 88 BC, Denarius; Craw-346/1d, SYD-713a. VF	80
397.	ANONYMOUS; 86 BC, Denarius; Craw-350, SYD-723. Laureate head of Apollo/Jupiter in quadriga. EF	95
398.	L. JULIUS BURSIO; 85 BC, Denarius; Craw-352, SYD-728. Bust of Genius/Victory in quadriga. VF	100
399.	MN. FONTEIUS C. F.; 85 BC, Denarius; Craw-353/1a, SYD-724. Head of Vejovis/Genius seated on goat. EF/VF	95
400.	C. NORBANUS; 83 BC, Denarius; Craw-357/16, SYD-739. Flatly struck Obv. VF	100
401.	Q. ANTONIUS BALBUS; 83-2 BC, Denarius; BMC-2750-69, Craw-364/1d, SYD-742b. Laureate head of Jupiter right/Victory in quadriga right. EF	125
402.	L. CENSORIUS; 82 BC, Denarius; Craw-363/1d, SYD-737. VF	110
403.	A. POSTUMIUS A. F. SP. N. ALBINUS; 81 BC, Denarius; Craw-372/1, SYD-745. About EF	70
404.	A. POSTUMIUS A. F. SP. N. ALBINUS; 81 BC, Denarius; Craw-372/2, SYD-746. EF	150
405.	C. NAEVIUS BALBUS; 79 BC, Denarius; Naevia-6, Craw-382/lb, SYD-769b. Obv Head of Venus/Victory in triga right, number above. EF	150
406.	TI. CLAUDIUS TI. F. AP. N. NERO; 79 BC, Denarius; Craw-383/1, SYD-770. About EF	70
407.	CN. LENTULUS; 76-75 BC, Denarius; Cornelia-55, Craw-393/1a, SYD-752. Reverse ex s.c. divided by terrestrial globe between rudder and sceptre. EF90	
408.	C. HOSIDIUS C. F. GETA; 68 BC, Denarius; Craw-407/2, SYD-903. EF	175
409.	C. PISO L. F. FRUGI; 67 BC, Denarius; Craw-408, SYD-851. Head of Apollo/Horseman galloping. About EF	65
410.	C. PISO L. F. FRUGI; 67 BC, Denarius; Craw-408, SYD-851. Head of Apollo/Horseman galloping. About EF	100
411.	M. PLAETORIUS M. F. CESTIANUS; 67 BC, Denarius; Craw-409/1, SYD-809. Winged bust of Vacuna. About EF	240
412.	L. ROSCIUS FABATUS; 64 BC, Denarius; Roscia-3, SYD-915. EF	225
413.	L. FURIUS CN. F. BROCCUS; 63 BC, Denarius; Furia-23, Craw-414/1, SYD-902A. VF+	135
414.	L. SCRIBONIUS LIBO; 62 BC, Denarius; Craw-416/1b, SYD-928. VF	80
415.	L. AEMILIUS LEPIDUS PAULLUS; 62 BC, Denarius; Aemilia-10, Craw-415/1, SYD-926. Head of Concord/Perseus with sons. VF	100
416.	M. AEMILIUS SCAURUS and PUB PLAUTIUS HYPSSAEUS; 58 BC, Denarius; Aemilia-8, Craw-422/b, SYD-913. EF	120
417.	L. MARCIUS PHILIPPUS; 56 BC, Denarius; Craw-425/1, SYD-919. EF/VF	120
418.	P. LICINIUS CRASSUS M. F.; 55 BC, Denarius; Craw-430/1, SYD-929. VF	75
419.	M. JUNIUS BRUTUS; circa 54 BC, Denarius; Craw-433/1, SYD-906. Small cut on Obv cheek. VF	265
420.	M. JUNIUS BRUTUS; circa 54 BC, Denarius; Craw-433/2, SYD-907. Assassin of Caesar. Encrusted. About EF	200
421.	Q. SICINIUS AND C. COPONIUS; 49 BC, Denarius; Sicinia-1, Craw-444/1a, SYD-939. Some flatness. EF	175
422.	Q. SICINIUS AND C. COPONIUS; 49 BC, Denarius; Craw-444/1a, SYD-939. Some flatness. VF+	100
423.	MAN. ACILIUS GLABRIO; 49 BC, Denarius; Craw-442/1a, SYD-922. VF+	185
424.	ALBINUS BRUTI F.; circa 48 BC, Denarius; Postumia-11, Craw-450/1a, SYD-941. VF	75
425.	ALBINUS BRUTI F.; 48 BC, Denarius; Craw-450/1a, SYD-941. EF	250
426.	ALBINUS BRUTI F.; 48 BC, Denarius; Craw-454/2, SYD-942. Corrosion. VF	110
427.	ALBINUS BRUTI F.; 48 BC, Denarius; Postumia-10, Craw-450/2, SYD-942. EF	140
428.	C. VIBIUS C. F. C. N. PANSA CAETRONIANUS; 48 BC, Denarius; Craw-449, SYD-947. Mask of Pan/Jupiter seated. Some flatness. EF	140
429.	C. VIBIUS C. F. C. N. PANSA CAETRONIANUS; 48 BC, Denarius; Vibia-19, Craw-449/1b, SYD-948. Mask of Pan with pedum behind. Weak strike. About EF	125
430.	L. HOSTILIUS SASERNA; 48 BC, Denarius; Craw-448/3, SYD-953. EF/Fine	65
431.	L. PLAUTIUS PLANCUS; 47 BC, Denarius; Plautia-14, SYD-959. Corrosion. About EF/VF	135
432.	MN. CORDIUS RUFUS; 46 BC, Denarius; Craw-463/1b, SYD-976c. VF	120
433.	MN. CORDIUS RUFUS; 46 BC, Denarius; Craw-463/3, S-3, SYD-977. VF	80
434.	MN. CORDIUS RUFUS; 46 BC, Denarius; Cordia-4, SYD-978. Owl standing on Corinthian helmet/Aegis of Minerva with Medusa in center. Obv flatness. VF	100
435.	T. CARISIUS; 46 BC, Denarius; Carisia-1, SYD-982. Rx Implements of minting. Weakly struck. VF	90
436.	C. CONSIDIUS PAETUS; circa 46 BC, Denarius; Considia-2, Craw-465/2a, SYD-991. Some flatness. EF	225
437.	L. VALERIUS ACISCULUS; 45 BC, Denarius; Valeria-17, SYD-998. Obv Scratches in right field. About EF	125
438.	JULIUS CAESAR; Died 44 BC, Denarius; Circa 49-48 BC; Craw-443/1, SYD-1006. Flatly struck. VF	195
439.	JULIUS CAESAR; 47-46 BC, Denarius; SSI-12, SYD-1013. Rx Aeneas walking left carrying Anchises. Near Mint State	300

440.	JULIUS CAESAR; 47-46 BC, Denarius; S-12. Head of Venus right/Aeneas walking left with Anchises and Palladium. VF . . . . .	200
441.	JULIUS CAESAR; 46-45 BC, Denarius; Craw-468/1, SYD-1014. Fine . . . . .	175
442.	JULIUS CAESAR; Died March 15, 44 BC, Denarius; Craw-480/16, SSI-9, SYD-1067. Lifetime Issue. Some flatness. EF . . . . .	2500
443.	JULIUS CAESAR; 44 BC, Denarius; Craw-480/18, SYD-1072. Some flatness. EF/VF . . . . .	1500
444.	MARCUS JUNIUS BRUTUS; Died 42 BC, Denarius; Craw-508/2, SYD-1300, "Moving Mint". Fine . . . . .	475
445.	MARCUS JUNIUS BRUTUS; Died 42 BC, Denarius; Craw-500/7, SYD-1310, "Moving Mint". Fine+ . . . . .	300
446.	C. CASSIUS LONGINUS; 43-42 BC, Denarius; Craw-500/3, SYD-1307. Light Rx corrosion at upper right. EF . . . . .	1250
447.	MARC ANTONY; Died 30 BC, Denarius; Circa 32-31 BC, Legion XI; Craw-544/24, SYD-1228. Fine . . . . .	175
448.	JULIUS CAESAR AND MARC ANTONY; Died 44 BC, Denarius; Circa 43 BC; Craw-488/1, SYD-1165. VF . . . . .	2500
449.	MARC ANTONY OCTAVIAN; 41 BC, Denarius; Craw-517/2, SYD-1181. Flan crack at 5 o'clock on Obv. EF . . . . .	1100
<b>ROMAN IMPERIAL</b>		
450.	AUGUSTUS; Circa 2-14 AD, Denarius; S-43c. Obv Bankers mark. VF . . . . .	250
451.	AUGUSTUS; 27 BC - 14 AD, Denarius; C-153. VF+/EF . . . . .	300
452.	TIBERIUS; 14-37 AD, Denarius; C-15. "Tribute Penny". EF/VF . . . . .	375
453.	VITELLIUS; 69 AD, Denarius; C-72. VF/Fine . . . . .	525
454.	VESPASIAN; 69-79 AD, Denarius; Judaea Capta; C-226. Old scratch on Rx. VF+/VF . . . . .	550
455.	VESPASIAN; 69-79 AD, Denarius; C-362. VF . . . . .	125
456.	DOMITIAN; 81-96 AD, Denarius; C-280. VF . . . . .	150
457.	DOMITIAN; 81-96 AD, Denarius; C-282. VF/Fine . . . . .	170
458.	NERVA; 96-98 AD, Denarius; C-71. VF+ . . . . .	350
459.	TRAJAN; 98-117 AD, Denarius; C-115. VF/VF+ . . . . .	325
460.	TRAJAN; 98-117 AD, Denarius; C-150. VF+ . . . . .	225
461.	TRAJAN; 98-117 AD, Drachm, Arabia. VF+ . . . . .	350
462.	TRAJAN; 98-117 AD, Drachm, Arabia. VF+ . . . . .	250
463.	TRAJAN; 98-117 AD, Tridrachm; Cappadocia Caesarea; Circa 112-117 AD. EF . . . . .	400
464.	TRAJAN; 98-117 AD, Tridrachm; Cappadocia Caesarea; Circa 112-117 AD.; SYD-190a. Rx Distyle temple with simulacrum of Pergean Artemis. About EF . . . . .	375
465.	TRAJAN; 98-117 AD, Tridrachm; Cappadocia Caesarea; Circa 112-117 AD. VF . . . . .	200
466.	HADRIAN; 117-138 AD, Denarius; C-466. Near Mint State . . . . .	600
467.	HADRIAN; 117-138 AD, Denarius; C-875. EF . . . . .	350
468.	HADRIAN; 117-138 AD, Tetradrachm, Antioch. VF . . . . .	600
469.	ANTONINUS PIUS; 138-161 AD, Denarius; C-164. Fine . . . . .	50
470.	ANTONINUS PIUS; 138-161 AD, Denarius; C-982, S-1247. About EF . . . . .	130
471.	COMMODUS; 177-192 AD, Denarius; C-202. VF . . . . .	45
472.	SEPTIMIUS SEVERUS; 193-211 AD, Denarius; C-1. VF/Fine+ . . . . .	100
473.	SEPTIMIUS SEVERUS; 193-211 AD, Denarius; C-227. VF+ . . . . .	80
474.	SEPTIMIUS SEVERUS; 193-211 AD, Denarius; C-370. About EF . . . . .	80
475.	SEPTIMIUS SEVERUS; 193-211 AD, Denarius; C-580. Fine+ . . . . .	55
476.	SEPTIMIUS SEVERUS; 193-211 AD, Denarius; C-727. VICTORIA BRIT. VF/Fine . . . . .	175
477.	JULIA DOMNA; Wife of Septimius Severus, Denarius; C-14. EF/VF . . . . .	90
478.	JULIA DOMNA; Wife of Septimius Severus, Denarius; C-226. EF+ . . . . .	150
479.	JULIA DOMNA, Wife of Septimius Severus, Denarius; C-226. EF/VF . . . . .	80
480.	GETA; 209-212 AD, Denarius; C-43. EF . . . . .	140
481.	GETA; 209-212 AD, Denarius; C-44. VF . . . . .	150
482.	GETA; 209-212 AD, Denarius; C-104. VF . . . . .	75
483.	GETA; 209-212 AD, Denarius; C-170. EF . . . . .	155
484.	GETA; 209-212 AD, Denarius; C-183. EF . . . . .	250
485.	SEVERUS ALEXANDER; 222-235 AD, Denarius; C-204. Near Mint State . . . . .	155
486.	CARACALLA; 198-217 AD, Denarius; C-152. EF+ . . . . .	195
487.	CARACALLA; 198-217 AD, Denarius; C-245. VF . . . . .	125
488.	CARACALLA; 198-217 AD, Denarius; C-296. About EF . . . . .	145
489.	CARACALLA; 198-217 AD, Antoninianus; C-295. Usual weakly struck Rx. EF . . . . .	300
490.	CARACALLA; 198-217 AD, Denarius; C-413. EF/VF . . . . .	140
491.	CARACALLA; 198-217 AD, Denarius; C-587. VF . . . . .	65
492.	CARACALLA; 198-217 AD, Denarius; C-590. EF . . . . .	145
493.	CARACALLA; 198-217 AD, Denarius; C-629. VICTORIAE BRIT. VF . . . . .	175
494.	CARACALLA; 198-217 AD, Denarius; C-658. VF . . . . .	50
495.	CARACALLA; 198-217 AD, Denarius; C-672. EF . . . . .	165
496.	CARACALLA; 198-217 AD, Denarius; Circa 212 AD; RIC-199. EF . . . . .	285
497.	PLAUTILLA; C-16. VF . . . . .	120
498.	ELAGABALUS; 218-222 AD, Denarius; C-195. EF/VF+ . . . . .	200
499.	ELAGABALUS; 218-222 AD, Denarius; C-276, S-2120. About EF . . . . .	65
500.	JULIA MAESA; Died 235 AD, Grandmother of Elagabalus; Denarius; C-8, S-2180. About EF . . . . .	100

501.	SEVERUS ALEXANDER; 222-235 AD, Denarius; C-173. Near Mint State . . . . .	175
502.	SEVERUS ALEXANDER; 222-235 AD, Denarius; C-187. EF+ . . . . .	150
503.	SEVERUS ALEXANDER; 222-235 AD, Denarius; C-204. VF . . . . .	50
504.	SEVERUS ALEXANDER; 222-235 AD, Denarius; C-260. VF+ . . . . .	100
505.	JULIA MAMAEA; Mother of Severus Alexander, Denarius; C-5, S-2306. About EF/VF . . . . .	70
506.	MAXIMUS; 235-238 AD, Denarius; C-7. EF . . . . .	100
507.	MAXIMINUS I; 235-238 AD, Denarius; C-99. VF . . . . .	65
508.	GORDIAN III; 238-244 AD, Denarius; C-69. About EF . . . . .	50
509.	GORDIAN III; 238-244 AD, Antoninianus; C-173. Weakly struck Rx. EF . . . . .	65
510.	GORDIAN III; 238-244 AD, Denarius; C-238. VF . . . . .	50
511.	PHILIP I; 244-249 AD, Antoninianus; C-12. Near Mint State . . . . .	120
512.	PHILIP I; 244-249 AD, Antoninianus; C-165. EF . . . . .	50
513.	PHILIP I; 244-249 AD, Antoninianus; C-178, S-2570. She-wolf left, suckling Romulus and Remus. Some porosity. VF . . . . .	100
514.	PHILIP II; 247-249 AD, Antoninianus, Antioch Mint; C-1. Mint State . . . . .	185
515.	PHILIP II; 247-249 AD, Antoninianus; C-17, S-2664. Near Mint State . . . . .	140
516.	PHILIP II; 247-249 AD, Antoninianus, Antioch Mint; C-40. Mint State . . . . .	145
517.	OTACILIA SEVERA; Wife of Philip I, Antoninianus; C-4. VF . . . . .	50
518.	OTACILIA SEVERA; 248-249 AD, Antoninianus; C-4. Near Mint State . . . . .	200
519.	OTACILIA SEVERA; Wife of Philip I, Antoninianus; C-53. VF+ . . . . .	55
520.	TRAJAN DECIUS; 249-251 AD, Antoninianus; C-16. EF . . . . .	100
521.	TRAJAN DECIUS; 249-251 AD, Antoninianus; C-86. About EF . . . . .	80
522.	TRAJAN DECIUS; 249-251 AD, Antoninianus; C-113. VF+ . . . . .	45
523.	HERENNIA ETRUSCILLA; Wife of Trajan Decius; Antoninianus; C-17. VF . . . . .	50
524.	HERENNIA ETRUSCILLA; Wife of Trajan Decius; Antoninianus; C-19. Mint State . . . . .	175
525.	HERENNIA ETRUSCILLA; Wife of Trajan Decius; Antoninianus, Antioch Mint; C-19. EF . . . . .	120
526.	TREBONIANUS GALLUS; 251-253 AD, Antoninianus; C-76, S-2788. VF . . . . .	50
527.	HERENNIUS ETRUSCUS; 251 AD, Antoninianus; C-26. VF . . . . .	75
528.	VOLUSIAN; 251-253 AD, Antoninianus; C-133, S-2832. VF . . . . .	50
529.	VALERIAN; 253-260 AD, Antoninianus; C-141. Weakly struck Rx. EF . . . . .	85
530.	GALLIENUS; 253-268 AD, Antoninianus; C-137, Cohen-3Fr. Full Silver. EF . . . . .	100
531.	GALLIENUS; 253-268 AD, Antoninianus, 3.03g; M-716v. Silvered. EF . . . . .	40
532.	AURELIAN; 275-276 AD, Antoninianus; C-154. Mint State . . . . .	175
533.	SEVERINA; Wife of Aurelian; Antoninianus; C-3. VF . . . . .	65
534.	PROBUS; 276-282 AD, Antoninianus; C-37. EF . . . . .	110
535.	PROBUS; 276-282 AD, Antoninianus; C-305. VF+ . . . . .	45
536.	PROBUS; 276-282 AD, Antoninianus; C-802. EF . . . . .	100
537.	PROBUS; 276-282 AD, Antoninianus; C-681. Mint State . . . . .	225
538.	PROBUS; 276-282 AD, Antoninianus; C-773. Near Mint State . . . . .	200
539.	PROBUS; 276-282 AD, Antoninianus; C-896. EF+ . . . . .	145
540.	PROBUS; 276-282 AD, Antoninianus; C-928. EF . . . . .	65
541.	CARAUSIUS; 287-293 AD, Antoninianus, London; RIC-101. EF . . . . .	300
542.	CARAUSIUS; 287-293 AD, Brockage Antoninianus. EF . . . . .	425
<b>BRONZE</b>		
543.	CONSTANTINE I THE GREAT; 307-337 AD, Aquileia; C-536. EF . . . . .	50
544.	CONSTANTINE I THE GREAT; 307-337 AD, Lugdunum; C-536. EF . . . . .	50
545.	HELENA; Mother of Constantine I; S-3908. EF . . . . .	125
546.	JULIAN II; 360-363 AD; Seaby-4072. Fine+ . . . . .	100
547.	JULIAN II; 360-363 AD; Seaby-4073. Fine+ . . . . .	135
548.	CONSTANTINE III; 407-411 AD, AR Siliqua; S-4261. EF . . . . .	600
549.	NORTH CENTRAL GAUL; Circa 30-20 BC, Imitative of Massalia, 3.48g. VF 40	
550.	SPAIN, IMITATIONS OF ROMAN REPUBLICAN AE; 2nd-1st Century BC. VF . . . . .	45
551.	EBSRUS, SPANISH ISLANDS; Circa 80 BC, Semis; Burgos-1050. Standing Bes. Rare. VF . . . . .	100
552.	CAMPANIA, CALES; AE 21mm; BMC-26. Green patination. Fine+ . . . . .	85
553.	THOURIOI, CALABRIA; Circa 400-350 BC, AE 14; S-638v. VF . . . . .	85
554.	METAPONTION; Circa 375 BC, AE Obol; S- . VF+ . . . . .	200
This and the next coin are the only Bronze coins with a denomination written on them.		
555.	LUCANIA, METAPONTUM; 375 BC, Obol. Flatly struck. Fine+ . . . . .	100
556.	LUCANIA, METAPONTUM; 350-300 BC; BMC-172. Hercules/Barley. Fine+ . . . . .	75
557.	LUCANIA, METAPONTUM; 350-300 BC. Zeus/Barley corn. Fine+ . . . . .	75
558.	LUCANIA, METAPONTUM; BMC-170. Female head/Locust crawling up ear of corn. VF . . . . .	150
559.	RHEGIUM; Before 387 BC, AE 16mm; Grose-1884. Obv Lions scalp facing/PH to right of olive sprigs. Emerald patination. EF . . . . .	250
560.	RHEGIUM; 350-270 BC; DAN SNG-1941 but head left., Grose- , Lloyd- , Weber- . Lion's scalp/Head of Apollo. Emerald patination. About EF/EF . . . . .	300
561.	SICILY, UNCERTAIN CITY; 4th-3rd Century BC; BMC- , but see p 237 #1. Fine+ . . . . .	100
562.	SICILY, SELINUS; 415-409 BC; AE Trias. VF . . . . .	175
563.	SICILY, SELINUS; Circa 440-425 BC, Cast Uncia; Vecchi-315 better than plate coin. VF . . . . .	100
564.	SICILY, AGRIGENTUM; 425-406 BC, Hemilitron; S-1022. Fine+ . . . . .	150
565.	SICILY, AGRIGENTUM; Before 406 BC; Weber-1207. VF . . . . .	165

566. SICILY, HIMERA; Before 413 BC, Light Class. Naked youth on goat blowing shell. VF+ . . . . .	250	622. JUDAEA, HEROD I; 40 BCE-4 CE, Samaria Mint; Hendin-39, Mesh-1. Dated Yr-3 = 40 BCE. VF+ . . . . .	600
567. SICILY, CAMARINA; Late 5th Century BC; Bronze. Obv Athena/Owl with lizzard. EF . . . . .	250	623. JUDAEA, HEROD I; 40 BCE-4 CE, 4 Prutot, Samaria Mint; Hendin-40, Mesh-2. Dated Yr-3 = 40 BCE. VF+ . . . . .	500
568. SICILY, SYRACUSE; 440-425 BC, Trias; S-1184v. Green patina. Abt. EF . . . . .	120	624. JUDAEA, BAR KOCHBA WAR; 132-135 CE; Hendin-177, Mesh-81b. EF . . . . .	425
569. SICILY, SYRACUSE; 344-336 BC (time of Timoleon); S-1189. Athena left/Star between two dolphins. VF/EF . . . . .	75	625. JUDAEA, AGRIPPA II, Portrait of Nero; Struck 61 CE; Mesh II #1. Struck to commemorate Agrippa's refounding of Pania as Neronias.. Nero's nose weak. EF . . . . .	1500
570. SICILY, SYRACUSE; 344-336 BC, AE Trias; Seaby-1193. Athena/Hippocamp. Fine+ . . . . .	100	626. JUDAEA, JUDAEA CAPTA; Struck in Palestine, Titus Obverse; Hendin-183, Mesh-Supp VII #5. Fine/Fine+ . . . . .	475
571. SICILY, SYRACUSE, AGATHOKLES; 317-289 BC, AE 22; Seaby-1200. VF 70		627. JUDAEA, RAMLEH; 800-1000 AD, Arab Settlement. VF . . . . .	80
572. SICILY, SYRACUSE, AGATHOKLES; 317-289 BC, AE 22; Seaby-1200 VD 85		628. JUDAEA, RAMLEH; 800-1000 AD, Arab Settlement. VF . . . . .	80
573. SICILY, SYRACUSE, KING HIERON II; 275-215 BC. Head of Apollo/Horseman. Obv pitted. Fine/VF+ . . . . .	100	629. ANONYMOUS; 265-242 BC, Quadrans, Rome; Crawford-6a. Good VF . . . . .	1100
574. SICILY, SYRACUSE; 274-216 BC; Grose-2941. Persephone/Butting bull. Green patination. VF+ . . . . .	100	630. ANONYMOUS; 225-217 BC, AS, Rome; Crawford-35/1. Janus/Prow. Slightly weak mold. EF . . . . .	2800
575. MACEDONIA, TRAGILOS; 400-357 BC, AE 15; Berk-50th #434. Obv off center. VF . . . . .	45	631. ANONYMOUS; 225-217 BC, Quadrans; Craw-35/4. Head of Hercules/Prow. About Fine . . . . .	350
576. MACEDONIA, PHILIPPI; 357-330 BC, AE 18; BMC-5/8, S-1452. VF . . . . .	160	632. ANONYMOUS; After 211 BC, As; Craw-56/2. Fine . . . . .	125
577. MACEDONIA, ALEXANDER III THE GREAT; 336-323 BC, AE 20; S-6739. Fine+ . . . . .	60	633. ANONYMOUS; After 211 BC, Triens; Craw-56/4. Helmeted head of Minerva. Fine+ . . . . .	300
578. THRACE, MARONEIA; Circa 400-350 BC; S-1636. VF+ . . . . .	125	634. ANONYMOUS (Semili3ral); 217-215 BC, Semuncia; Rome Mint; Craw-38/7. Head of Mercury/Prow of ship. Fine+ . . . . .	100
579. ILIUM (Ancient Troy); 1st Century AD. Fine . . . . .	100	635. ANONYMOUS; 169-158 BC, As, Rome; Craw-173/1. Fine . . . . .	100
580. CHALKIS, EUBOEA; 369-336 BC, AE; Grose-5681 pl 204 #9. Hera facing/Eagle flying right. Fine+ . . . . .	100	636. GERMANICUS; Died 19 AD, As; BMC-218, RIC-106. About EF . . . . .	350
581. CHALKIS, EUBOEA; 369-336 BC, AE; Grose-5681. Hera facing/Eagle flying right. Fine . . . . .	100	637. NERO; 54-68 AD, Tetradrachm, Antioch. Rx Agrippina Jr. Fine . . . . .	400
582. OLBIA, CHERRONESUS; 3rd-1st Century BC; S-1685. Fine+ . . . . .	75	638. CLAUDIA; Daughter of Nero and Poppaea; 63 AD; C-1, S-714. VF+ . . . . .	700
583. NORTHERN GREECE, CHERRONESOS, MESEMBRIA; 3rd-2nd Century BC; BMC8-10, S-1676. VF . . . . .	110	639. VESPASIAN; 69-79 AD, As. Bold Fine . . . . .	150
584. BITHYNIA, PRUSIAS I; 238-183 BC. Counterstamp in Obv field. Fine+ . . . . .	60	640. GALBA; 68-69 AD, As; C-154v, RIC-64. Head left/Pax standing left. Isolated pit above laurel wreath. Expressive VF . . . . .	765
585. BITHYNIA, PRUSIAS II; 183-149 BC; Grose-7533. Portrait/Herakles. VF . . . . .	100	641. ROME; ANONYMOUS QUADRANS; Period of Domitian-Antoninus Pius; C-3, RIC-37, S-836. Fine . . . . .	100
586. ATTIC ATHENS; 229-60 BC, AE 22; Not in BMC, Ex. Lockett Coll. Athena/Demeter. Fine . . . . .	150	642. TRAJAN; 98-117 AD, AE Quadrans. Bust of Hercules. Fine . . . . .	50
587. ATHENS; 350-262 BC, AE 14; S-2562. Rx Two owles. Fine . . . . .	60	643. FAUSTINA JR; Wife of Marcus Aurelius; Sestertius. VF . . . . .	375
588. ATTIC ATHENS; 2nd Century AD. About Fine . . . . .	70	644. FAUSTINA JR; Wife of Marcus Aurelius; Sestertius, 25.57g; C-122. Fine+ . . . . .	125
589. RHODES; 1st Century AD. Fine . . . . .	100	645. LUCILLA; Wife of L. Verus; Sestertius; C-37. VF . . . . .	275
590. CARIA, HALICARNASSUS; 2nd-1st Century BC; S-4881. Zeus/Trident. VF . . . . .	50	646. COMMODUS; 177-192 AD, Sestertius; RIC-450. Rare Rx type. VF . . . . .	150
591. SICILY, SYRACUSE, HIERON II; 275-215 BC; S-1223. VF/Fine . . . . .	70	647. JULIA DOMNA; Wife of Septimius Severus; Sestertius; C-90. Fine+VG . . . . .	135
592. CILICIA, ELAIUSSA; 1st Century BC, AE 19; S-5681. Fine+ . . . . .	40	648. MAXIMINUS I; 235-238 AD, Sestertius; C-34. VF . . . . .	185
593. LYCIA, PHASELIS; 2nd-1st Century BC; S-5343-4v. EF . . . . .	125	649. GORDIAN III; 238-244 AD, Sestertius; C-43. EF . . . . .	225
594. MYSIA, PERGAMUM; 3rd-2nd Century BC, AE 15; S-3971. About VF . . . . .	100	650. PHILIP I; 244-249 AD, Sestertius, 22.62g; C-51. EF . . . . .	250
595. LYDIA, SARDEIS; 2nd-1st Century BC; S-4736. About VF . . . . .	50	651. PHILIP II; 247-249 AD, Sestertius; C-18. EF . . . . .	250
596. CILICIA, SELEUKEIA; 2nd-1st Century BC, AE 19; BMC-21 #130, S-5593v. Head of Apollo/Forepart of horse. VF . . . . .	100	<b>ROMAN COLONIAL</b>	
597. PHOENICIA, MATATHOS; 2nd Century BC, AE 23; S-6037v. Fine/VF . . . . .	45	652. SYRIA, ANTIOCH, TIBERIUS; 14-37 AD. Fine+ . . . . .	60
598. AMISUS, TIME OF MITHRADATES EUPATOR; 118-63 BC; Grose-7373. Aegis with Gorgoneion/Nike. Fine+ . . . . .	45	653. CAPPADOCIA, CAESAREA, TITUS; 78-79 AD; BMC-24. Struck by the Governor M. Hirtius Fronto Neratius Pansa. Rare. VF . . . . .	350
599. SELEUCID EMPIRE, SELEUCUS I; 312-280 BC, AE 20; S-6849. VF . . . . .	75	654. CILICIA, ANAZARBUS, DOMITIAN AND DOMITIA; 81-96 AD; SNG Levante-1324. About VF . . . . .	250
600. SELEUCIDS, ANTIOCHUS IV, DIONYSOS; 145-142 BC, AE 21; S-7081. VF 70		655. CILICIA, MALLUS, ANTONINUS PIUS; SNG LEVANTE-1275. VF . . . . .	150
601. ANTIOCHUS IV; 175-164 BC, Hieropolis, Kastabala Cilicia; SNG Leu-1565. EF . . . . .	175	656. ANTONINUS PIUS AND MARCUS AURELIUS; Cyprus; BMC-48. Fine+VF . . . . .	275
602. SELEUCIDS, ANTIOCHUS VII EUERGETES (Sidetes); 138-129 BC, AE 18; S-7098v. Fine+ . . . . .	55	657. CAPPADOCIA, CAESAREA, MARCUS AURELIUS; 25 AD Caesar. Fine . . . . .	40
603. SELEUCIDS, ALEXANDER II, ZEBINA; 128-123 BC, AE 21; S-7126. Fine+ . . . . .	65	658. LYDIA, APOLLONIA, SEPTIMIUS SEVERUS; 193-211 AD. About VF . . . . .	150
604. SYRIA, ANTIOCHEIA; 1st Century BC, AE 23; S-5855. VF . . . . .	75	659. PISIDIA, ANTIOCH, SEPTIMIUS SEVERUS; 193-211 AD. Fine+ . . . . .	60
605. SYRIA, ANTIOCHEIA; 1st Century BC, AE 23; S-5855. Fine+ . . . . .	50	660. CILICIA, HIEROPOLIS, JULIA DOMNA. About VF . . . . .	40
606. SYRIA, APAMEIA; 2nd-1st Century BC, AE 20. Fine/VF . . . . .	75	661. PISIDIA, ANTIOCH, JULIA DOMNA; 193-217 AD; SNG COP-37v. VF . . . . .	100
607. SYRIA, APAMEIA; 1st Century BC, AE 20; BMC-4v. Fine/VF . . . . .	75	662. PISIDIA, ANTIOCH, GETA; 209-211 AD; SNG VA 49v. VF . . . . .	100
608. SYRIA, ANTIOCH (Time of Nero); ΔP= 55/6 AD. VF . . . . .	65	663. PISIDIA, ANTIOCH, GORDIAN III; 238-244 AD; SNG COP-68. About VF . . . . .	175
609. EGYPT, PTOLEMY II. VF . . . . .	95	664. MESOPOTAMIA, EDESSA, GORDIAN III AND ABOAR VII; BMC-144. About VF . . . . .	100
610. EGYPT, CLEOPATRA VII; 51-30 BC, 40 Drachmai; S-7956, Svor-1872. Fine+ . . . . .	350	665. CAPPADOCIA, CAESAREA, TRANQUILINA; 242-243 AD; BMC-330. Choice. VF . . . . .	225
611. EGYPT, CLEOPATRA VII; 51-30 BC, AE 80 Drachmai. Fine+ . . . . .	600	666. CILICIA, ANAZARBUS, TRANQUILINA; 242-243 AD; SNG Levante-1489. Fine . . . . .	150
612. EGYPT, PTOLEMY IV; 221-205 BC; DAN SNG-219, SV-1166. VF . . . . .	200	667. MESOPOTAMIA, EDESSA, JULIA MAMAEA; BMC 119-122. About VF . . . . .	75
613. EGYPT, PTOLEMY IV; 221-205 BC; DAN SNG-219, Sv-1166. VF . . . . .	200	668. LYDIA, SAITTA, OTACILIA SEVERA. Fine . . . . .	70
614. CARTHAGE; 340-240 BC. VF . . . . .	90	669. PAMPHYLIA, SILLYON, PHILIP II; 3rd Century BC, AE 24. Pan seated left playing flute. Fine/VF . . . . .	140
615. AFGHANISTAN, THE HEPHTHALITES or WHITE HUNS; 450-550 AD, AE Drachm, Uniface; M-1444v. VF . . . . .	50	670. CILICIA, ANAZARBUS, PHILIP II; 244-248 AD. Fine . . . . .	45
616. ALEXANDER JANNAEUS; 103-76 BCE, Prutah; Hendin-7, Mesh-Group A. VF . . . . .	200	671. MESOPOTAMIA, NISBIS, PHILIP II. About EF . . . . .	250
617. ALEXANDER JANNAEUS; 103-76 BCE, Prutah; Hendin-7, Mesh-AB3. VF+ . . . . .	225	672. SYRIA, ANTIOCH, PHILIP II; 244-248 AD, Silver Tetradrachm. EF . . . . .	100
618. HEROD I; 40 BCE-4CE, 2 Prutot; Hendin-43 type, Mesh-8a. EF . . . . .	350	673. MESOPOTAMIA, EDESSA, TRAJAN DECIUS. VF . . . . .	85
619. HEROD ARCHELAUS; 4 BCE-6CE, 2 Prutot; Hendin-61, Mesh-2. VF/Fine . . . . .	300	674. CILICIA, FLARIUPOLIS, VALERIAN; SNG Levante-1559. Bold Fine/VF . . . . .	250
620. JUDAEA, HEROD ANTIPAS; 4 BCE-40 CE; Hendin-66, Meshorer-10. Yr-34=30 CE. VF+ . . . . .	1800	675. CILICIA, SELEUCIA, VALERIAN; SNG Levante-1586. Piece out of coin. Fine . . . . .	100
621. JUDAEA, HEROD ANTIPAS; 4 BCE-40 CE; Hendin- , Meshorer-13. Yr-37 = 33 CE. VF+ . . . . .	2400	676. CILICIA, FLAVIUPOLIS; SNG LEVANTE-1559. Fine . . . . .	50
		677. CILICIA, ANAZARBUS, VALERIAN; 253-260 AD. Fine+ . . . . .	75
		678. GALLIENUS; 253-268 AD; von Aulock-5659. Fine . . . . .	300
		679. CILICIA, ANAZARBUS, GALLIENUS; 253-268 AD. Fine+VF . . . . .	75
		680. CILICIA, ANAZARBUS, GALLIENUS; 253-268 AD. VF . . . . .	75

681.	CILICIA, SYEDRA, SALONINA; 253-268 AD; SNG Levante-445. Green patination. VF . . . . .	175
<b>BYZANTINE</b>		
• 682.	VANDALIC, HILDERICH; 523-530 AD, 4 Nummia, Carthage; BMC 12-14, Hahn-20. About EF . . . . .	175
683.	JUSTIN I; 518-527 AD, Follis, Cyzicus; Berk-87. Circa 525/526 AD. Fine . . . . .	250
684.	JUSTIN I; 518-527 AD, Pentanummium, Constantinople; Berk-59. Fine+ . . . . .	300
685.	JUSTIN I AND JUSTINIAN I; 527 AD, Half Follis, Antioch Mint; Berk-120. Only recorded specimen. Fine . . . . .	1000
686.	JUSTINIAN I; 527-565 AD, Follis, Antioch; Berk-148. Very scarce in this grade. VF . . . . .	250
687.	JUSTINIAN I; 527-565 AD, Follis, Constantinople. Legend in retrograde using Latin and Greek type of Berk-123. Bold Fine . . . . .	250
688.	JUSTINIAN I; 527-565 AD, Follis, Constantinople; Berk-218, Hahn-95. Circa 545/46 AD. VF . . . . .	175
689.	JUSTINIAN I; 527-565 AD, Follis; Berk-236, DO-215b, Hahn-143. Circa 539/40 AD. VF . . . . .	135
• 690.	JUSTINIAN I; 527-565 AD, Follis, Antioch; Hahn-145c var, officina "B", unpublished. Crescent moon below date. About VF . . . . .	250
• 691.	JUSTINIAN I; 527-565 AD, Follis, Nicomedia. Yr-15. About VF . . . . .	125
692.	JUSTINIAN I; 527-565 AD, Follis, Antioch; Berk-239, Hahn-146. VF . . . . .	120
693.	JUSTINIAN I; 527-565 AD, 16 Nummi, Thessalonica; Berk-164. VF . . . . .	275
694.	JUSTINIAN I; 527-565 AD, Carthage; Berk-190, Hahn-185c. Green patination. About EF . . . . .	275
695.	JUSTIN II; 565-578 AD, Follis, Antioch; Berk-326. Circa 565-566 AD. About VF . . . . .	350
696.	JUSTIN II; 565-578 AD, Follis, Carthage; Berk-341, DO-202. Fine . . . . .	250
• 697.	TIBERIUS II; 578-582 AD, Follis, Constantinople; H-252, S-429. VF . . . . .	50
• 698.	TIBERIUS II; 578-582 AD, Half Follis, Rome, Military Mint; DOC-61a. VF . . . . .	200
699.	MAURICE; 582-602 AD, Follis, Nicomedia; Berk-410, Hahn-77. VF . . . . .	125
700.	FOCAS; 602-610 AD, 3/4 Follis, Nicomedia; Berk-484. With some flat areas from striking. EF . . . . .	675
• 701.	HERACLIUS; 610-641 AD Follis, Isaura Mint. VF . . . . .	300
702.	HERACLIUS; 610-641 AD, Follis, Seleucia; Berk-575, Hahn-193. "A". VF . . . . .	140
703.	CONSTANTINE IV; 668-685 AD, Half Follis; Berk-722. Circa 673-674 AD. VF . . . . .	400
• 704.	CONSTANTINE IV; 668-685 AD, Follis, Syracuse Mint; BN-4, DO-62, S-1110. Fine+ . . . . .	100
• 705.	JUSTINIAN II; 685-695 AD, First Reign, Follis, 7.15g; Off-A; H-44, Yr-2. Fine+ . . . . .	175
• 706.	JUSTINIAN II; 685-695 AD, First Reign, Follis, 8.30g; Off-E; H-44; Yr-2. Fine+ . . . . .	275
• 707.	JUSTINIAN II; 685-695 AD, First Reign, Follis, 9.75g; Off-A; H-44; Yr-2. Overstruck. VF+ . . . . .	125
• 708.	JUSTINIAN II; 685-695 AD, First Reign; 1/2 Follis, 5.33g; Off-R; H-47. VF . . . . .	200
709.	LEONTIUS; 695-698 AD, Decanummium, Constantinople; Berk-788. Circa 695-696 AD. VF . . . . .	500
710.	JUSTINIAN II, 2nd Reign; 705-711 AD, Follis; Berk-805. Circa 705-706 AD. Fine . . . . .	800
711.	ANASTASIUS II; 713-715 AD, Follis; Berk-824. Fine+ . . . . .	350
712.	THEODOSIUS III; 715-717 AD, Follis, Syracuse; Berk-834. Green patination, unusual flan. VF . . . . .	1000
713.	LEO III; 717-741 AD, Follis, Constantinople; Berk-836. Circa 717-720 AD. Fine+ . . . . .	875
714.	CONSTANTINE V; 741-775 AD, Half Follis, Constantinople; Berk-857, DOC-7b. Fine+ . . . . .	125
• 715.	CONSTANS V; 741-775 AD, Syracuse; S-1569. VF . . . . .	50
716.	MICHAEL VII; 1071-1078 AD, Follis, Constantinople; Berk-958. Obv misstruck. Fine/EF . . . . .	100
717.	MICHAEL VII; 1071-1078 AD, Follis, Constantinople; Berk-958. Rx misstruck. VF+ . . . . .	75
• 718.	ALEXIUS I, COMNENUS; 1081-1118 AD, Lead Token. Circa 1092-3 AD. VF . . . . .	100
• 719.	ALEXIUS I, COMNENUS; 1081-1118 AD, Follis; H pl 313, S-1911. Fine . . . . .	20
• 720.	NICAEA, THEODORE I, COMNENUS-LASCARIS; 1208-1222 AD; DO-IV 37,5, S-2021. Obv weakly struck. Fine+/EF . . . . .	60
• 721.	THEODORE I (of Nicaea); 1208-1222 AD, Billon Trachy; Hahn-8/9, S-2068. Fine . . . . .	55
• 722.	THESSALONICA, THEODORE, COMNENUS-DUCAS; 1224-1230 AD, Billon Trachy; H pl 37, 7-9, Seaby-2161. VF/VF+ . . . . .	95
<b>AUSTRIA AND STATES</b>		
ARCHDUKE FERDINAND; 1564-1595		
723.	TYROL, ND, Hall; Taler; Dav-8095. Virtually as struck with luster and golden toning. . . . .	595
ARCHDUKE LEOPOLD; 1619-1631		
724.	TYROL; 1624, Hall; Taler; Dav-3330. Nice VF+ . . . . .	225

LEOPOLD I; 1657-1705		
725.	1695, Vienna; Taler; Dav-3230. VF+ . . . . .	175
SALZBURG		
HIERONYMUS; 1772-1803		
726.	1799, M; Taler; C-107a. VF . . . . .	110
<b>BALKANS</b>		
STEFAN KOTROMANIC; 1322-1353		
727.	BOSNIA, ND; Denar, 0.9g; Rengj Obv 803 Rx802; 18mm. Well struck on round planchet. Scarce coin, especially in this condition. XF . . . . .	275
STEFAN VIII AROS IV DUSEN as Czar; 1346-1355		
728.	SERBIA, ND; Denar; Jov-38. About VF with typical areas of weakness . . . . .	125
<b>CRUSADERS - KINGDOM OF JERUSALEM</b>		
BALDWIN III; 1143-63		
729.	ND; Denier; Met-82-84. Struck on nice round planchet with only one area of weakness, it is nice XF with beautiful luster and patina . . . . .	60
<b>DENMARK</b>		
CHRISTIAN V; 1670-1699		
730.	1679; 4 Marks; H-144. VF . . . . .	195
FREDERICK VI; 1808-1834		
731.	1825, FF; Rigsdaler species; C-112. VF-XF . . . . .	100
CHRISTIAN IX; 1863-1906		
732.	1905/805; 25 Ore; Y-12.2. BU . . . . .	60
<b>EGYPT</b>		
733.	1929; 1/2 Millime; C-343. Red Unc . . . . .	50
734.	1939; 10 Piastres; KM-367. AU . . . . .	40
<b>FIJI ISLANDS</b>		
735.	1935; 6 Pence; KM-3. About XF . . . . .	55
<b>FRANCE</b>		
SAINT LOUIS (IX); 1226-1270		
736.	ND; Gros Toumois; 4g; Ciani-180. Well struck, strong VF . . . . .	125
PHILIPPE IV LE BEL; 1285-1314		
737.	ND; 3.9g; Ciani-200. Struck on the porous planchet, still a nice VF . . . . .	85
CHARLES VI; 1380-1422		
738.	1389; Blanc Guenar; Ciani-507. Typically weak VF with some luster still . . . . .	50
739.	1417; Florette; Ciani-524. With typical weakness, cracked and uneven planchet it is still almost as struck with lots of original luster . . . . .	80
CHARLES VII; 1422-1461		
740.	1436; Blank aux couronelles; Ciani-686. F-VF . . . . .	50
FRANCOIS I; 1515-1547		
741.	1540; Douzain aux couronelles; Ciani-1157. F . . . . .	60
742.	ND (up to 1540); Douzain aux couronelles; Ciani-1157sim. Rx: + SIT: DOMIN BENEDICTUM. F-VF . . . . .	85
HENRY II; 1547-1559		
743.	1551; Douzain aux croissants; Ciani-1305. F+ . . . . .	95
HENRY IV; 1589-1610		
744.	1598; Quart d'ecu; Ciani sim 1516. About VF . . . . .	125
745.	1601; Demi Franc; Ciani Sim to 1539. F . . . . .	250
746.	1779 I, Doublestruck; Sol; C-735. VF . . . . .	60
747.	1850 BB; 5 Francs; Y-6.2. XF+ . . . . .	150
748.	1887 A; 50 Centimes; Y-481. XF-AU . . . . .	50
749.	1910-A; 100 Francs. XF-AU . . . . .	695
<b>FRENCH FEUDAL STATES</b>		
AQUITAINE-MELLE		
CHARLES THE BALD; 843-877		
750.	Denarius; 1.8g; Mor-1066. VF-XF . . . . .	195
BOURBONNAIS		
SEIGNEURIE DE BOURBON		
751.	ND; Denier; Boud-365. About VF . . . . .	60
BOURBONNAIS SOUVIGNY		
752.	ND, Denier; Boud Rx-357, Obv-360. VF . . . . .	150
BRETAGNE-PENTHIEVRE		
ETIENNE I; 1093-1038		
753.	Denier d'arg; Boud-144. Good round planchet. VF-XF . . . . .	60
DAUPHINE-BISHOP OF VALENCE & DIE		
ANONYMOUS		
754.	ND, Obole; Boud-1022. VF . . . . .	50
FLORENNES		
GAUCHER DE CHATILLON; 1312-1322		
755.	ND, Esterling d'arg; Boud-2171. About VF . . . . .	60
LANGUEDOC-BISHOP & COUNT OF TOULOUSE		
RAYMOND V, VI OR VII; 1148-1249		
756.	ND, Obole, Boud-722. VF . . . . .	80
LYONNAIS-BISHOP		
ANONYMOUS		
757.	ND, Denier d'arg; Boud-1130. Round planchet, well struck VF-XF . . . . .	60
METZ		
ROBERT DE LEUNCOURT; 1551-1555		
758.	ND, Bugne d'arg; Boud Rx 1649. Obv: STEPH METEN.S. Somewhat weak but lustrous XF . . . . .	65



<b>NEVERS</b>	
759. ND, Denier d'arg; Boud sim to 339, Obv: +LODVICVS.R. About VF . . . . .	60
HERVE DE DONZY; 1199-1223	
760. ND, Denier d'arg; Boud-345. VF . . . . .	60
<b>POITOU</b>	
ALPHONSE DE FRANCE; 1241-1271	
761. ND, Denier d'arg; Boud- , Obv: +ΔLTVNSVS COMES Rx: +PICTAVIENTSIS. VF . . . . .	50
<b>PROVENCE-MARQ</b>	
RAYMOND VII; 1222-1249	
762. Denier D'arg; Boud sim to 787. Obv +R.COMES PALACI, Rx: +DVC.MARCh PV. VF-XF . . . . .	50
<b>STRASBOURG-BISHOPRIC</b>	
763. ND, Denier d'arg; Boud sim to 1313, but angel to right. Typically weak. XF . . . . .	60
<b>GERMAN EAST AFRICA</b>	
764. 1916-T; 15 Rupien; KM-16 R. XF-AU for the type . . . . .	1350
<b>GERMANIC CITIES AND STATES</b>	
<b>BADEN</b>	
766. 1834; Thaler; Blessing on the Baden Mines. KM-202. F+ . . . . .	195
<b>BAVARIA</b>	
MAXIMILIAN III JOSEPH; 1745-1777	
767. 1767; Taler, Amberg Mint; C-37a; Dav-1950. VF-XF . . . . .	195
LUDWIG II; 1864-1886	
768. 1876- D; 5 Marks; J-42. VF+ . . . . .	120
<b>BREISGAU</b>	
769. ND; Pfennig; Wiel-50, Wuthr-55. As Struck . . . . .	55
<b>BRUNSWICK-WOLFENBUTTEL</b>	
CARL I; 1735-1780	
770. 1765, IDB; 2/3 Taler, Gulden; C-75. About VF . . . . .	110
<b>COLMAR</b>	
771. ND; 1/2 Batzen; Saur-1932. VF-XF . . . . .	50
<b>HAMBURG</b>	
772. 1876- J; 5 Mark; J-62, KM-287. VF-XF . . . . .	120
<b>LIEGNITZ-BRIEG</b>	
773. ND; Groschen; Saur-127. F-VF . . . . .	70
<b>LUBECK</b>	
774. 1758, JJJ; 32 Schilling; C-12/2. VF+ . . . . .	100
<b>SAXONY</b>	
ERNESTINE LINE; JOHAN FRIEDRICH & MORITZ; 1541-1547	
775. 1546, Taler, Freiberg; Dav-9730. V-VF . . . . .	150
ALBERTINE LINE; CHRISTIAN II, JOHANN GEORG AUGUST; 1591-1611	
776. 1592, Taler; Dav-9820. F-VF . . . . .	120
777. 1597, Taler; Dav-9820. VF-XF . . . . .	135
778. 1609; Taler; Dav-7566. VF . . . . .	135
FRIEDRICH AUGUST III; 1763-1827	
779. 1775, Dresden; Konventionstaler; Buck-142a, Dav-2691, Schnee-1074. XF . . . . .	250
780. 1788, Dresden; Konventionstaler; Buck-162a, Dav-2696, Schnee-1087. XF+ . . . . .	250
<b>WUERTEMBERG</b>	
781. 1893, F; 5 Mark; Y-222. VF-XF . . . . .	125
<b>WURZBURG-BISHOPRIC</b>	
FRANZ LUDWIG, FREIHERR VON ERTHAL; 1779-1795	
782. 1785; 20 Konvention Kreuzer; C-78, Helmschr-904, Seg. Piloty-1328. About XF . . . . .	175
<b>THIRD REICH</b>	
783. 1933-D; 2 Mark; J-352. XF+ . . . . .	50
784. 1934-A; 2 Mark; J-355, KM-81. Potsdam Church. BU . . . . .	85
<b>ENGLAND</b>	
ELIZABETH I; 1558-1603	
785. 1578; Sixpence; S-2572. Greek Cross. VF . . . . .	125
CHARLES II; 1660-1685	
786. 1673; Crown; Seaby-3358. F . . . . .	150
GEORGE III; 1760-1820	
787. 1817; AE Medal; Sir Henry Charles Englefield; 1752-1822; Antiquary and Writer, also owned Coin & Medal collection. Brown-978-R, D-66/2, E.P.M. 1891/77. As struck . . . . .	65
789. 1819, LIX; Crown; S-3787. XF+ . . . . .	200
VICTORIA; 1837-1901	
790. 1847; Gothic Crown; KM-744, S-3883. Undecimo. Ch Proof . . . . .	1500
791. 1897, LX; Crown; KM-783, Seaby-3937. XF+ . . . . .	150
792. 1902, B; 1 Dollar; KM-75. CU AU++ . . . . .	50
<b>GREECE</b>	
793. 1838; 2 Lepta; KM-14. VF+ . . . . .	60
<b>HAITI</b>	
794. 1830, Year 27; 100 Centimes; KM-23. VF . . . . .	50
<b>HUNGARY</b>	
KOLOMAN-GEZA II; 1095-1161	
795. ND; Denar; Rethy V-65. As struck . . . . .	60

## INDIA-MOGHUL EMPIRE

AKBAR; 1556-1605	
796. Ilani year 36, Mintless type; 1/2 Rupee; KM-64/1. XF . . . . .	55
<b>ITALY</b>	
797. 1863; 10 Lire; 19mm; KM-9.3, Y-1318.3. XF-AU . . . . .	100
798. 1906; 20 Centesimi Token for Milan Int. Expo, convertible into regular coinage. Mostly red UNC . . . . .	50
799. 1931, Year IX; 50 Lire; Fr-34, KM-71, Y-70. UNC . . . . .	250
<b>JAMAICA</b>	
800. 1894; Farthing; KM-15. AU+++ . . . . .	50
<b>JAPAN</b>	
801. 1901; 1 Yen; Y-A 25.2. AU . . . . .	120
802. 1903, Year 36; 1 Yen; KM-A 25.2. XF-AU . . . . .	75
803. 1964; 1000 Yen; Y-80. BU . . . . .	65
<b>LATIN AMERICA</b>	
<b>BOLIVIA</b>	
804. 1842, LR; 1/2 Escudo; C-63. XF . . . . .	300
805. 1854; 1/2 Escudo Proclamation Medal; Fonr-9591. Holed as usual. UNC . . . . .	200
<b>BOLIVIA-COCHABAMBA</b>	
806. 1876; 5 Centavos, Token. Note some resemblance to Costa Rican coinage of that period. About XF . . . . .	50
<b>BRAZIL</b>	
807. 1824-R; 960 Reis; KM-368.1. Lightly toned with slight weakness, lustrous. AU-UNC . . . . .	95
<b>COLOMBIA</b>	
808. 1925; 5 Pesos; KM-204. UNC . . . . .	110
<b>COSTA RICA</b>	
809. 1906; 2 Colones; KM-139. About XF . . . . .	50
810. 1899; 5 Colones; KM-142. . . . .	125
811. 1897; 20 Colones; KM-14. XF . . . . .	295
<b>CUBA</b>	
812. 1915; 5 Pesos; KM-19. XF+ . . . . .	155
813. 1915; 10 Pesos; KM-20. XF . . . . .	260
814. 1916; 2 Pesos; KM-17. UNC . . . . .	120
<b>GUATEMALA</b>	
815. 1821, NG, M; 4 Reales, Copper pattern; C-71, Sim to KM-68. Poor strike gives it appearance of being lower grade than it actually is. Thus for VF-XF . . . . .	500
816. 1822; 1 Real, Proclamation Piece; 3.3g; Fonr-7207. VF-XF . . . . .	60
817. 1880, 1894; Peso on Peru 5 Pes; KM-201.1; KM-225. Host & C/S. Abt. VF . . . . .	100
<b>MEXICO</b>	
818. 1877, GO, FR; 8 Reales; KM-377.8. Lustrous BU with minor hairlines . . . . .	60
819. 1895, Zs, FZ; 8 Reales; KM-377.13. Ch AU++ with p/l surfaces and luster . . . . .	60
820. 1896, MAM; 8 Reales; KM-377.10. Very minor hairlines but as high of a quality as you ever see . . . . .	100
821. 1901, Zs, z; 20 Centavos; KM-405.3. Lustrous XF-AU . . . . .	100
822. 1908, MoAM; 1 Peso. UNC . . . . .	80
823. GUERRERO, 1914; 2 Pesos; KM-643, Y-R37. Weakly struck on typically imperfect planchet. Virt. as struck . . . . .	95
824. 1938, Key Date; 50 Centavos; KM-447. XF+ . . . . .	100
<b>PERU-CUZCO</b>	
825. SANTA CRUZ, 1838; Peso 28.2g; Fonr-9235. AU . . . . .	250
<b>LORRAINE</b>	
CHARLES II; 1390-1431	
826. ND; Double Denier de Sierk; 0.9g; De Saul-VIII-7, Mon-210. VF . . . . .	85
CHARLES III; 1545-1608	
827. ND; Teston, 8.4g; De Saul-XXI-4, Mon-374. Fine+ . . . . .	120
828. ND. Teston, 9.1g; De Saul XXIII-6, Mon-378. Fine+ . . . . .	120
<b>PALESTINE</b>	
829. 1935; 100 Mils; KM-7. UNC . . . . .	75
830. 1940; 10 Mils; KM-4. BU . . . . .	100
831. 1942; 20 Mils; KM-5a. AU with lots of red . . . . .	50
832. 1945; 2 Mils; KM-2. Mostly red, UNC . . . . .	100
<b>POLAND AND HER POSSESSIONS</b>	
SIGISMUND I; 1506-1548	
833. 1530; Groschen of PRUSSIA; G-526. F-VF . . . . .	75
SIGISMUND II AUGUST	
834. 1558; AR Denarius of LITHUANIA; Gum-591; H/Cz 504-R2.Kop. XF . . . . .	150
STEPHAN BATHORY; 1576-1586	
835. 1586; 3 Grosze of RIGA; G-814. XF . . . . .	65
SIGISMUND III; 1587-1632	
836. 1596; 3 Grosze of RIGA; G-1454. XF . . . . .	75
837. 1631; Taler; G-1221, HCz-1645. F . . . . .	200
WLADISLAW IV; 1633-1648	
838. 1634; Taler; G-1545; HCz-5833. F . . . . .	200
WLADISLAW IV; 1633-1648	
839. 1641; Taler; Dav-4330, G-1551, HCz-1821 R. . . . .	200
840. 1648; Taler; Dav-4356, G-1597, HCz-9740. . . . .	300
JAN KASIMIR; 1649-1668	
841. 1660, Krakau; 6 Groszen; G-1689, HCz-5246. Lustrous XF . . . . .	135

ALEXANDER I; 1815-1825  
 842. 1822, IP; 10 Zlote; C-101.1, Dav-248, G-2525, HCz-3561. 233 pieces minted.  
 VF . . . . . 875

**ROMANIA**

843. 1906; 5 Lei; KM-35, Y-38. 40th Anniversary of Reign. VF-XF . . . . . 150

**RUSSIAN EMPIRE**

**GRAND DUCHY OF RYAZAN**

843A. ND (ca. 1380); Dengra. With tamga c/s over tartar coin. VF+ . . . . . 125  
 PETER II; 1727-1730

844. 1729; Ruble; Key Date, KM-182. VF+ . . . . . 250  
 ELIZABETH; 1741-1761

845. 1747; Rouble; C-196.4, Dav-1677. Lustrous. About XF . . . . . 295

846. 1748, MMD; 1 Ruble; C-19.1. Weakly struck but typical for Moscow Mint.  
 About XF . . . . . 225

847. 1793, KM; 5 Kopeks; C-59.9. Very sharp strike, good even planchet, next to  
 others of that type, it jumps XF+ . . . . . 140

**ALEXANDER I; 1801-1825**

848. 1804; 5 Kopeks; C-115.1. Pleasant problem free VF . . . . . 50

849. 1809; 1 Ruble; C-125a. XF . . . . . 150

850. 1817, First year of issue; 5 Rubles Gold; C-132. XF++ . . . . . 300

851. 1878; Rouble; Y-25. VF-XF (really cleaned UNC) . . . . . 50

852. 1897; 15 Roubles; Y-65. XF+ . . . . . 300

853. AH, 1339 (1921), AH; 25 Roubles of KHWAREZM; Y-12. XF+ . . . . . 100

854. 1924; Rouble; Y-90. UNC . . . . . 50

**SPAIN AND HER POSSESSIONS**

**CARLOS & JUANA; 1506-1516**

855. SANTO DOMINGO; ND; First coin of Americas; 4 Maravedis; CC-2529. F+ 85

856. SANTO DOMINGO; 4 Maravedis; c/s Anchor (Jamaica) F . . . . . 200

857. MEXICO; ND, O, (1536-72); 4 Reales; C-2662. VF . . . . . 275  
 PHILIP II; 1556-1598

858. GULDERLAND; 1567; 1/5 Philip Daalder (Teston); CC-4896. F-VF . . . . . 65

859. LA PLATA; ND (1574) C; 4 Reales. Rare. VG . . . . . 375

860. POTOSI; ND (1575) B over C; 4 Reales; CC-4108. Nice and round, almost  
 good enough to be a presentation piece. VF-XF . . . . . 795  
 FELIPE V; 1700-1724, 1724-1746

861. POTOSI; 1733 E; 2 Reales; CC-12103. Rx P 2 dates. VF . . . . . 120

862. MEXICO; 1739 MF; 8 Reales; CC-12596. VF+ . . . . . 195  
 FERDINAND VI

863. MEXICO; 1758, MM; 8 Reales. VF-XF . . . . . 250  
 CARLOS III

864. MEXICO; 1763/4, MF; 8 Reales; C-35, KM-105. Rare overdate. F . . . . . 175

865. MEXICO; 1768, MF; 8 Reales; C-35, KM-105. VF . . . . . 195

866. MEXICO; 1785, FM; 8 Reales; C-40, KM-106. XF-AU . . . . . 250  
 CARLOS IV; 1788-1808

867. 1806, PJ; 1 REAL; CC-16277. BU . . . . . 95

868. 1808, PJ; 1/2 Real; C-33; KM-69. BU . . . . . 60  
 FERDINAND VII; 1808-1833

869. GUATEMALA; 1808; QUESALTENANGO; 1 Real Proclamation piece; 3.4g;  
 Fonr- . Holed as usual. VF . . . . . 75

870. POTOSI, 1808, PJ; 8 Reales; KM-84. AU . . . . . 200  
 FERDINAND VII

871. 1810, HJ; 8 REALES; H-539, KM-110. XF-AU . . . . . 175

872. BOLIVIA; 1821, PJ; 1/2 Real; KM-90XF-AU . . . . . 60  
 SWEDEN AND HER POSSESSIONS

**GUSTAV II ADOLF; 1611-1632**

873. 1624; 1 Ore of REVAL; Ahl-596. VF . . . . . 60  
 CARL XIV JOHAN; 1818-1844

874. 1825; 1/2 Skilling; C-123. Partially red. UNC . . . . . 150

**ANTIQUITIES**

875. CARTHAGINIAN REDWARE, NORTH AFRICA; Circa 300-500 AD.  
 AMPHORA; Beautifully shaped, minor chip at rim. Abt. 6" diameter, 8 1/2"  
 height . . . . . 400

876. Another; JUG; With incised decoration at neck. Intact. 4 1/2" diameter, 6 1/2"  
 height . . . . . 350

877. Another; SHALLOW DISH; Minor chip under rim. 11 1/2" diameter, 2"  
 Height . . . . . 300

878. Another; BOWL; Double-edged with rouletted interior design. Perfect. 6"  
 diameter . . . . . 150

879. MESAPIAN; TERRACOTTA PHIALE; Cream with painted orange concentric  
 circles on interior and exterior. Has several cracks. 5 3/4" diameter . . . . . 250

880. DAUNIAN, CENTRAL ITALIAN, Circa 400 BC. SINGLE-HANDLE MUG;  
 Cream with light brown decoration. Shows some wear on side, intact. 5 7/8"  
 height . . . . . 350

881. ETRUSCO-CORINTHIAN; FRAGMENT; 650-500 BC. Depicting portions of  
 lion, griffin and ibex. Repaired. 7 1/4" height x 10 1/2" wide . . . . . 350

**SOUTH ITALIAN**

882. FOOTED BLACKWARE DISH; From Campania, 300 BC. Has incised  
 decoration, minor chip on rim and small crack in center. Nice glaze. 7 1/2"  
 wide x 2 1/4" height . . . . . 250

883. BLACKWARE DISH; From Apulia, 400 BC. Perfect condition with rich dark  
 glaze. 6 3/4" diameter . . . . . 200

884. FOOTED BLACKWARE DISH; 400 BC. With incised decoration of five  
 palmettes on tondo. Beautiful glaze, good condition. 5 1/4" diameter x 1 1/4"  
 height . . . . . 300

885. CALENEWARE; 300 BC. Designed to fill from bottom and pour from spout in  
 the form of an animal's head. 3 1/2" height x 4" wide . . . . . 300

886. DUCK ASKOS; From Campania, 400 BC. Good condition, intact. 4 1/4"  
 height . . . . . 275

887. BLACKGLAZE LEKYTHOS; From Campania, 400 BC. Intact. 5 1/2" height 250

888. SKYPHOS; Circa 400 BC. With some incrustation and wear. Intact. 3 1/4"  
 height x 5 1/4" wide (at handles). . . . . 150

**SICILIAN**

889. TERRACOTTA BULL; 400 BC. With custom stand. Shows some wear. 3 3/4"  
 height x 6" length . . . . . 200

890. TERRACOTTA FRAGMENT OF STATUE; 400-300 BC. Depicting portion of  
 horse and rider, with custom stand. 5" length . . . . . 200

891. 'PLASTIC' VASE; 400 BC. Molded or Modeled, with black glaze in shape of  
 pig. Wonderful detail, intact. 7 1/2" length x 3 1/2" height . . . . . 2400

892. BOEOTIA, 600 BC; GEMOETRIC TERRACOTTA BIRD; With black paint.  
 Perfect condition. 4" length x 2 1/2" wide x 3" height . . . . . 4000

**ROMAN CLASS; 1st-5th Century AD**

893. SHALLOW FOOTED DISH; Pale green, some incrustation, light iridescence,  
 intact. 7 3/4" diameter . . . . . 850

894. BOWL; Light blue, heavy iridescence, intact. 3 3/4" diameter, 2 1/4" height 550

895. MINIATURE AMETHYST-COLOR BOWL; Some iridescence and corrosion. 2  
 1/2" wide . . . . . 150

896. UNGUENTARIUM; Deep blue-green color, perfect. 5" height . . . . . 400

897. UNGUENTARIUM; Fluted, light blue, heavy iridescence. Rim broken,  
 otherwise perfect. 3 1/4" height . . . . . 100

898. UNGUENTARIUM; Miniature, long-necked with custom stand. Blue-green, nice  
 iridescence, perfect condition. 3 1/2" height . . . . . 100

899. UNGUENTARIUM; Miniature, some incrustation, rich iridescence. Minor chip  
 at rim. Exquisite piece I . . . . . 150

900. BULBOUS FLASK; Pale green, some incrustation otherwise perfect. 4 1/4"  
 diameter x 6" height . . . . . 600

901. FLARED-MOUTH UNGUENTARIUM; Pale green, some indescence, intact. 4  
 3/4" height x 2 1/4" wide . . . . . 375

902. DROPPER FLASK; Mold Blown. Dark green, excellent condition. 3" height 450

903. DRINKING CUP; With thread design. Heavy incrustation. 4 1/4" height . . . . . 350

904. DRINKING CUP; Heavy incrustation. 3 3/4" height . . . . . 250

**OIL LAMPS**

905. SOUTH ITALIAN, CAMPANIAN BLACKWARE. 400 BC. Some wear. Intact. 4  
 1/4" length . . . . . 225

906. From TUNISIA, NORTH AFRICA; near Sbeitla; 1st-4th Century AD. Concentric  
 braids, with triangles on rim. Red-brown terracotta. Intact. 3 1/4" diameter 150

907. From TUNISIA, NORTH AFRICA; near Sbeitla. 140 AD. Running dog on disk  
 with geometric design on rim. Light brown terracotta with burnmark on lower  
 edge. Intact. 3" diameter . . . . . 150

908. ROMAN-EGYPTIAN; From Ancient Israel. Depicts frog. 2 1/2" wide . . . . . 150

909. ROMAN; Red Terracotta; 1st-5th Century AD. Depicting standing Victory. 2  
 1/4" wide . . . . . 200

910. From TUNISIA; 140 AD. Blackened with intricate geometric design. Minor chip  
 on handle. 2 1/4" wide . . . . . 100

911. BYZANTINE, SYRIAN; Early 7th Century. With two line Greek inscription  
 covering top. 3" wide . . . . . 450

912. ROMAN; Wine cup decoration with signature: IVNI ALEXI = from the workshop  
 of Junius Alexius. Repaired. 3 3/4" wide . . . . . 250

913. LATE ROMAN; 300 AD. Depicting Amphora with grapes on disk and rope  
 design. Light gray. Intact. 3" wide . . . . . 200

914. ROMAN; 110-120 AD. Depicting comic mask and wreath with two rim cleats.  
 Inscribed potter signature: ABINIA. Nozzle broken off. 3 1/2" wide . . . . . 200

915. ROMAN; 170 AD. Depicting winged "Genie" playing double flute with  
 surrounding floral design. 2 3/4" wide . . . . . 150

916. ROMAN; 300 AD. Depicting large rosette on disk. Broken handle. 2 3/4"  
 wide . . . . . 100

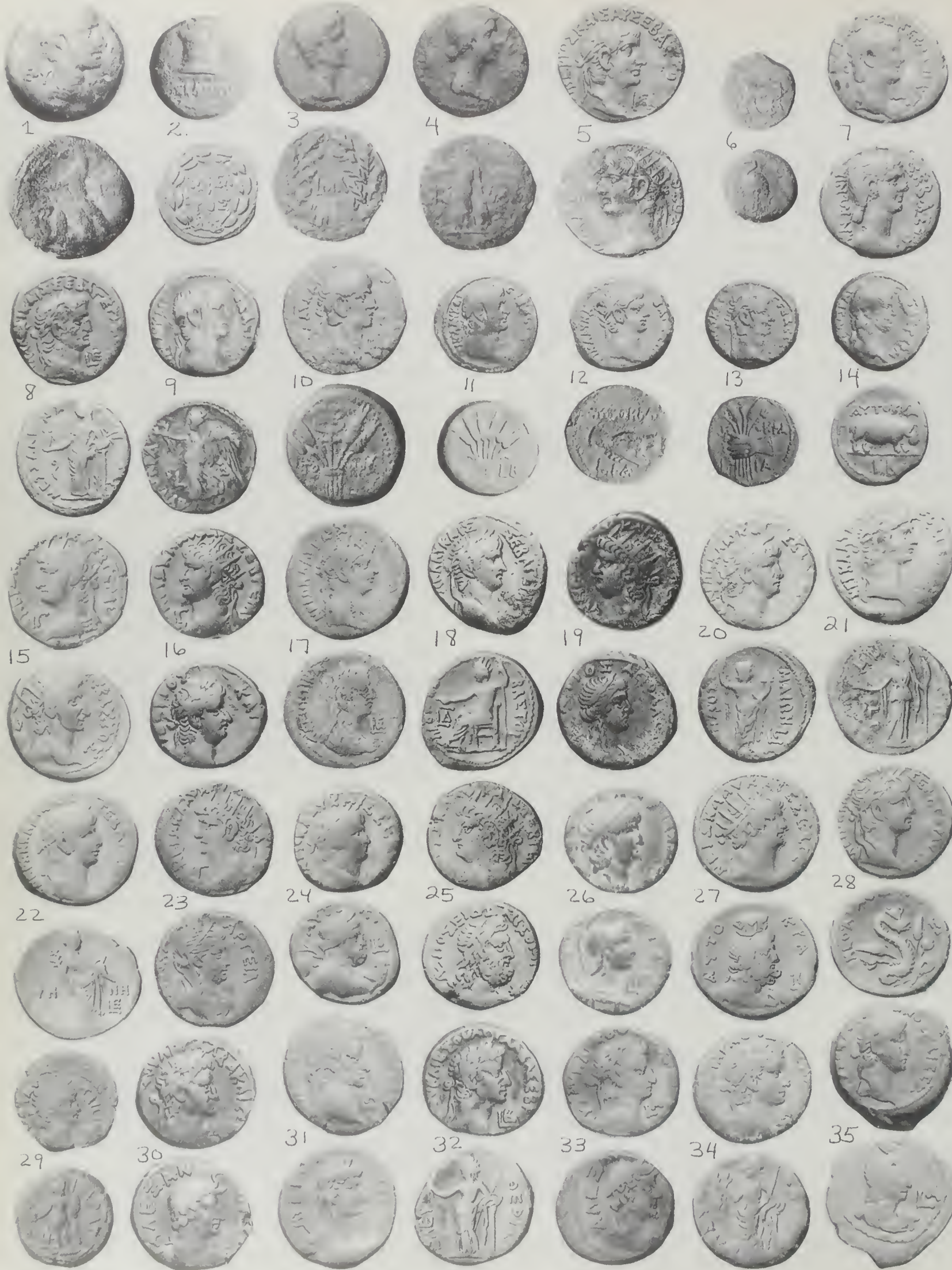
917. From TUNISIA, NORTH AFRICA; near Sbeitla; 1st-4th Century AD. Mold for  
 making oil lamps depicting rosette design. 7 1/2" length x 5 1/4" wide . . . . . 450

918. LURISTAN, SPEARHEAD; 700-400 BC. Cast, very narrow, leaf-shaped blade  
 with triangular midrib folded socket. Some incrustation. Comes with custom  
 acrylic stand. 5 1/4" height . . . . . 125

919. SPIKE-BUTTED AXE; 2500-1500 BC. Origin may be Elamite or Syrian.  
 Particularly distinctive of Early Iron Age. Some incrustation. Custom stand. 8"  
 wide . . . . . 750

920. CURVED BLADE; Possibly Luristan, 600-400 BC. Some minor cracks. Custom stand. 9" high . . . . . 200
921. SILVER LADLE, ACHAEMENID (Persia), 500-400 BC. Graceful shape with detailed animal head at finial. 10 3/4" height. . . . . 2500
922. PAIR OF ROMAN BRONZE AMPHORA HANDLES; Circa 2nd Century AD. Each with a foliate grip, arms terminated in duck heads. Lower attachment in form of head of Medusa with long-pointed locks radiating around face and emerging from volutes above. Beautiful brown-green patina. 10" height 15000
- EGYPTIAN ANTIQUITIES**
923. PRE-DYNASTIC VESSEL; 4000-2705 BC. Tall, Oblong shape, defined lip, slightly blackened. Custom stand. 11 1/2 height . . . . . 800
924. CLAY VESSEL; With defined shape, wide mouth, thin rim, covered with a red slip. Several chips at rim. Nice glaze. 6 1/2" height, 4" diameter . . . . . 300
925. OLD KINGDOM; ALABASTER STONE VESSEL; 2592-2160 BC. With remnants of lug handles, repaired rim. Custom stand. 3 1/2" height. . . . . 500
926. STONE VESSEL; PRE-DYNASTIC ERA; prior to 3500 BC. With pierced lug handles and defined flat rim. Beige and brown stone, one handle broken. 3 1/4" height, 3 1/2" diameter . . . . . 2200
927. STONE VESSEL; PRE-DYNASTIC ERA; Prior to 3500 BC. With pierced lug handles and defined flat rim. Beige and brown. Intact. 2 1/4" height, 3" diameter . . . . . 1700
928. GRINDING STONE; Old Kingdom; 2592-2160 BC. Probably used with palette for crushing cosmetics. Brown. 3" length . . . . . 650
929. COPTIC MARBLE BOWL; From Egypt, 5th-7th Century AD. Drilled circular holes around body, broken lug handles. 3 1/2" diameter . . . . . 600
930. TERRACOTTA 'BES' STATUE; 300 BC. God of domesticity. Represented as a pot-bellied dwarf, who brought happiness to homes at all levels of society. He protected the family, presiding over marriage, helping women in childbirth, then protecting the newborn child. 15 1/2" height . . . . . 5000
931. FACIAL SECTION FROM COFFIN; Egyptian, later New Kingdom, circa 1070 BC. Carved wood with attached beard. Has some traces of gesso and black paint. Approx. 17 1/2" height including stand . . . . . 2200
932. IBIS; Late Period, circa 600 BC. Associated with god Thoth, patron of knowledge and learning. Repaired and restored. Pale pink paint remaining. 17" long x 10 1/2" height . . . . . 2000
933. WOOD USHEBTI, OVERSEER WITH KILT; 21st Dynasty, 1085-945 BC. Has black painted hair, features and hieroglyphics. Some wear. 6 3/4" height 600
934. WOOD USHEBTI WITH BLACK PAINT HIEROGLYPHICS; 21st Dynasty, 1085-945 BC. Some wear. 7 1/4" height . . . . . 400
935. BASALT KNEELING FIGURE; Middle Kingdom, 2052 BC. 4" height . . . . . 700
936. TERRACOTTA MOLD FOR BACK PORTION OF BABOON; Roman Period. Great detail, custom stand. 4 3/4" height x 2 3/4" wide . . . . . 300
937. RELIGIOUS FIGURE; Late Period, 760-343 BC. Composed of wood with gesso and painted surface. Carved face and headdress with straight torso, applied arms (portion of one remaining) and applied hands. Hieroglyphics probably added later. Possibly representation of male deity, AMUN-RE. 27" height including marble base . . . . . 3000
938. FACIAL SECTION FROM COFFIN; Later New Kingdom, 1070 BC. Carved wood covered with gesso painted in bright colors, including flesh-toned face and multi colored headdress. 13 1/2" height including stand . . . . . 3500
939. EGYPTIAN PHILISTINE ANTHROPOID (human-like) FACIAL SECTION FROM COFFIN LID; 1400-1300 B.C.E. Terracotta, some incrustation. About 11 1/2' height x 14" wide . . . . . 3000
940. ANTHROPOID COFFIN LID; Egyptian Philistine, 1300-1200 BC. Aramaic inscription, probably added later. Repaired. 24" height x 24 1/2" wide 7500
941. ROMAN MOSAIC; 4th-5th Century AD. Depicting pale blue Ibis and flower in corner. 28 3/4" height x 32 1/2" wide . . . . . 6500
942. PHOENICIAN VOTIVE STELE; 3rd-2nd Century BC. From Carthage. Depicting "sign of tanit", associated with the female goddess, Tanit. Limestone, 11 1/2" height x 8 1/4" wide. Custom stand . . . . . 5000
943. NORTHERN SYRIAN, HELLENISTIC IDOL, CARVED CAMEL BONE; 3rd Century BC. Depicting face. 6 1/2" height . . . . . 250
944. NAYARIT CULTURE VESSEL; 250BC - 250 AD. Ceramic with brown slip, nice glaze. Several minor chips around rim. 8" diameter, 4 1/2" height . . . . . 350
945. PRE-COLUMBIAN JAR WITH HANDLES; 100 BC - 200 AD. Inside rim has redslip with nice glaze, otherwise brown. Excellent condition. 4 1/2" diameter . . . . . 150
946. PRE-COLUMBIAN TRIPOD; 100 BC - 25 AD. Terracotta with brown slip, nice glaze. One minor chip under rim. 5" diameter x 1 1/2" height . . . . . 140
947. PRE-COLUMBIAN DOUBLE BULBOUS VESSEL; With red vertical line decoration. Intact. 3 1/4" x 5" diameter . . . . . 165
948. RUSSIAN BRASS OR BRONZE ICON; Probably XVIII Century of "Theotokos and Child Immanuel". Foliage border of that kind is highly unusual and very specifically native. Overall excellent condition. 4 3/8" x 3 3/4" . . . . . 395
949. A CUTOUT OF RUSSIAN BRASS ICON; XVII Century. Depicting St. Nicholas and 2 other saints. Made into a pendant. About 1" x 1" . . . . . 50
950. EXQUISITE RUSSIAN BRASS PENDANT ICON; XVII-XVIII Century, of "Transfiguration of Our Lord". With Champere enamel of 6 different colors. In mint condition. An outstanding piece as far as quality and condition are concerned. 2" x 2" . . . . . 450
951. RUSSIAN BRASS PENDANT ICON; XVII-XVIII Century, of "Resurrection of Christ", Champere ename in 4 colors, excellent condition. If we did not have lot 950, we could say it is nicest one we've seen in years. 2" x 2" . . . . . 375
952. RUSSIAN BRASS PENDANT ICON; XVII-XVIII Century of "Our Mother of Sorrow". two-color Champere enamel. Near mint condition 2" x 2" . . . . . 325
953. BAN CHIANG FOOTED VESSEL; From Northeastern Thailand, 3000 BC. Cream color with red swirling, circular design. Graceful form. Intact. . . . . 2000
954. ANOTHER, slightly blackened inside mouth. Buff with red paint, horizontal stripes on neck. Wonderful shape, intact. 7 1/4" diameter, 12" height . . . . . 2500
955. ANOTHER, several chips at base of foot, rich red painted decoration throughout, vertical stripes near rim. 10 1/2" diameter, 1 1/2" height . . . . . 3000
956. ROMAN BRONZE SNAKE; Circa 1st Century AD. Criss-cross and dotted incising on top, horizontal lines beneath body. Fine detail on face, nice patina. 11 3/4" length . . . . . 3000
957. EGYPTIAN USHEBTIES; Saite Dynasty, 26th, 664-525 BC. Pale blue faience with hieroglyphics. Comes with custom acrylic stand. 4" - 4 1/2" in height. Your choice of A, B, C, D, E, F, G, H . . . . . each 250
- FIXED PRICE**
958. ANTONINIANI OF PROBUS and AURELIAN; . . . . . each 45
959. PANTIKAPAION in the CRIMEA, SCYTHIAN STYLE; 320 BC, Gold Stater, 8.53g. Near Mint State . . . . . 30,000
960. HELLENISTIC GREEK TORSO OF YOUNG MAN, Island marble; 3rd-2nd Century BC. 21" height . . . . . 70,000

**MAIL YOUR BID SHEETS IN EARLY**  
 - Many bid sheets with winning bids arrive  
 after the closing date -





36

37

38

39

40

41

42

43

44

45

46

47

48

49

50

51

52

53

54

55

56

59

57

58

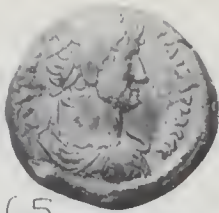
61

62

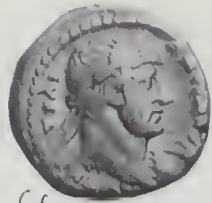
63



64



65



66



67



68



69



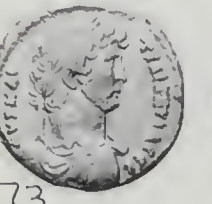
70



71



72



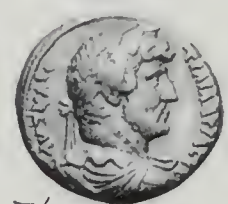
73



74



75



76



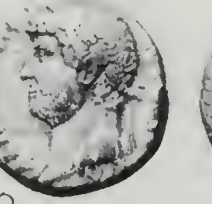
77



78



79



80



81



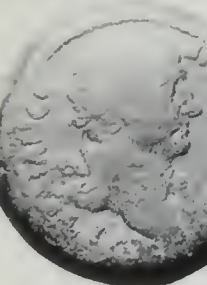
82



83



84



60



85



86



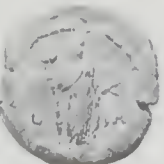
87



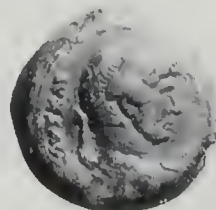
88



89



90



91



92

93

98



94

95

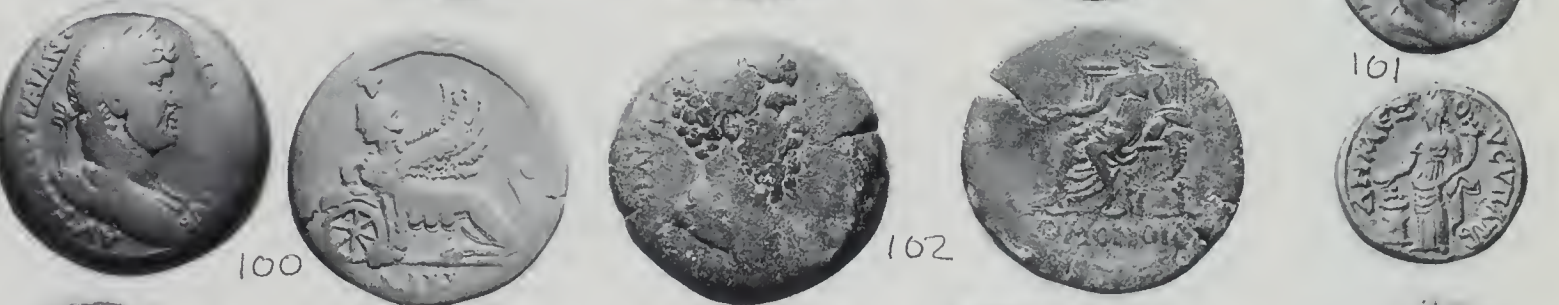
99



96

97

101



100

102



103

105

106

107



104



108

109

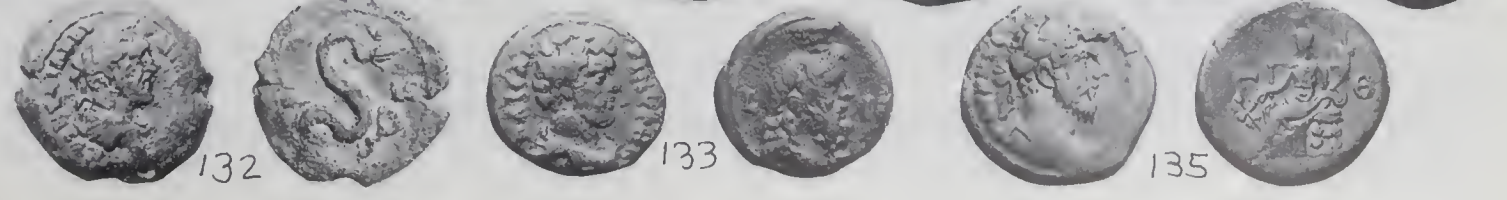
110

111

112

113

114



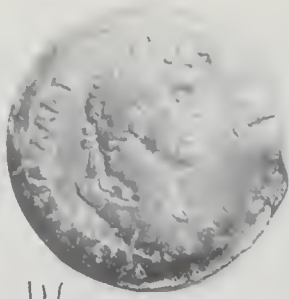
132

133

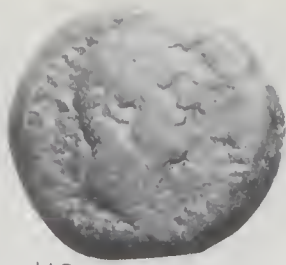
135



115



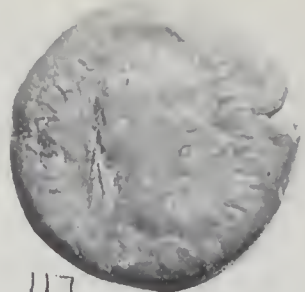
116



118



119



117



121



122



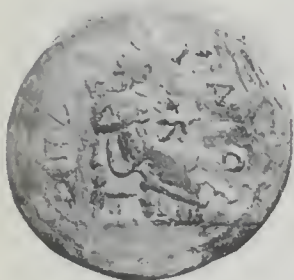
123



124



125



126



127



128



129



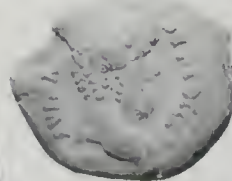
130



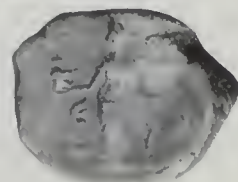
131



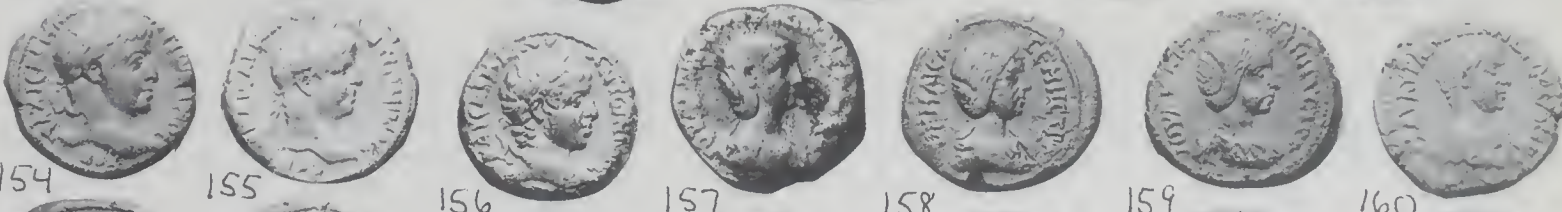
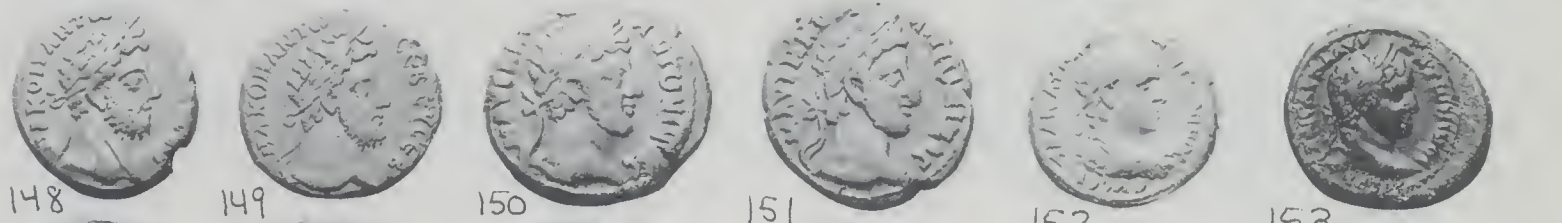
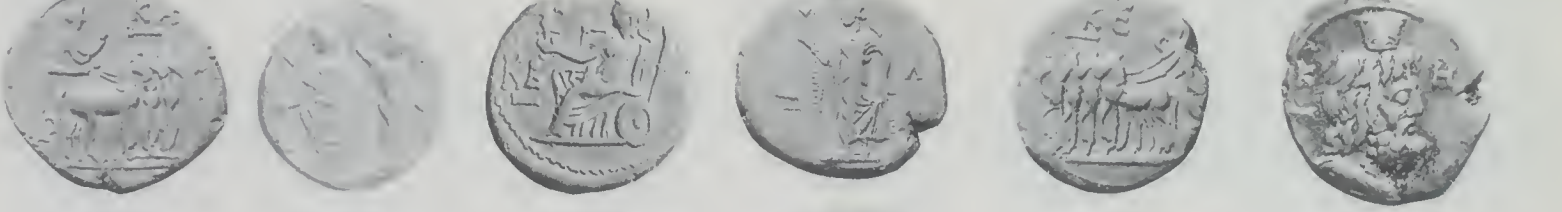
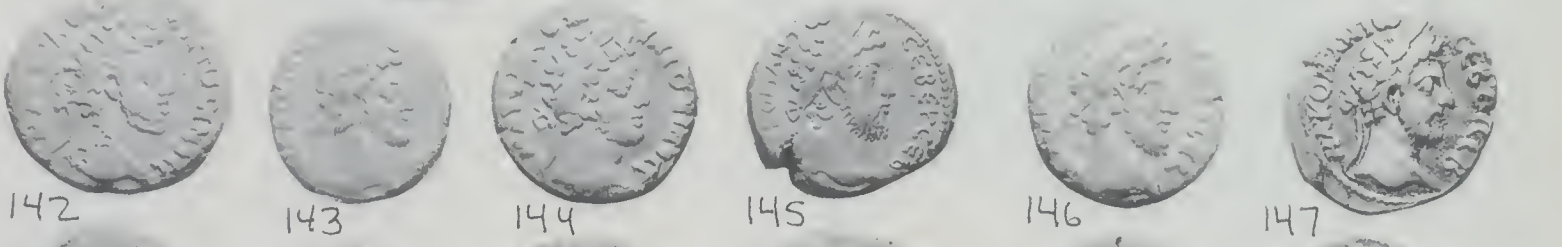
134

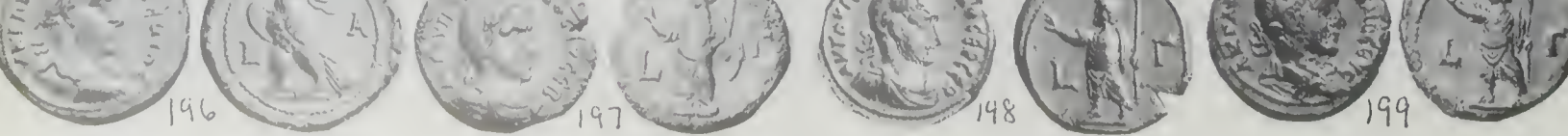
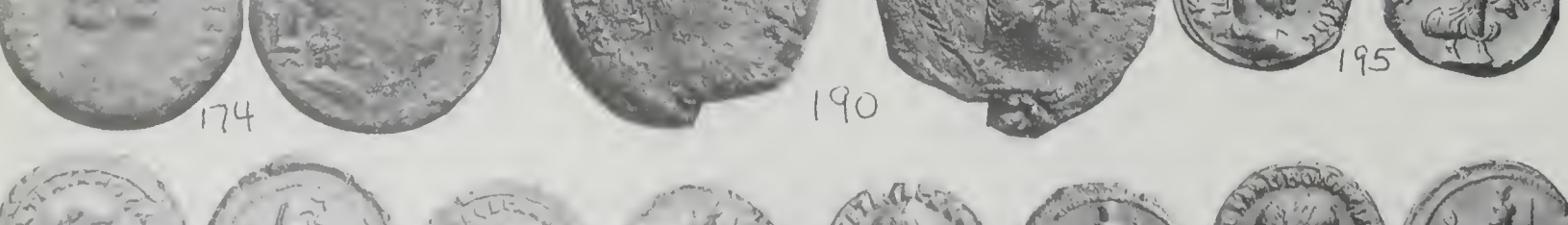
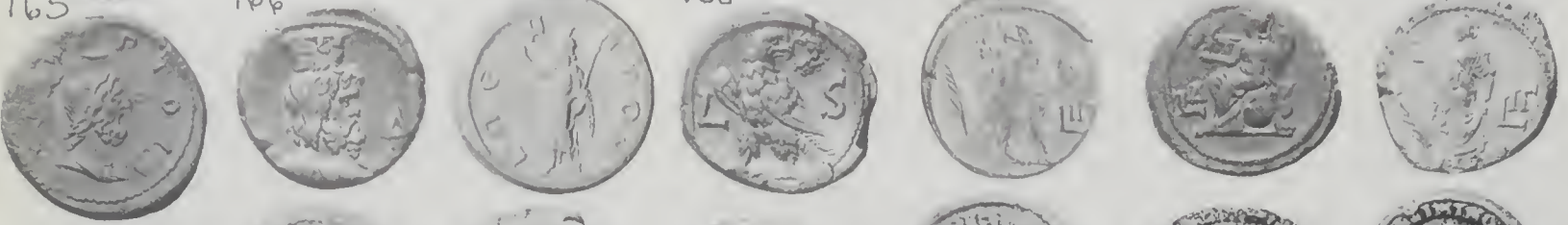


139









165

166

167

168

169

170

171

172

173

177

175

176

178

179

180

181

182

183

184

185

186

187

188

189

191

192

193

194

174

190

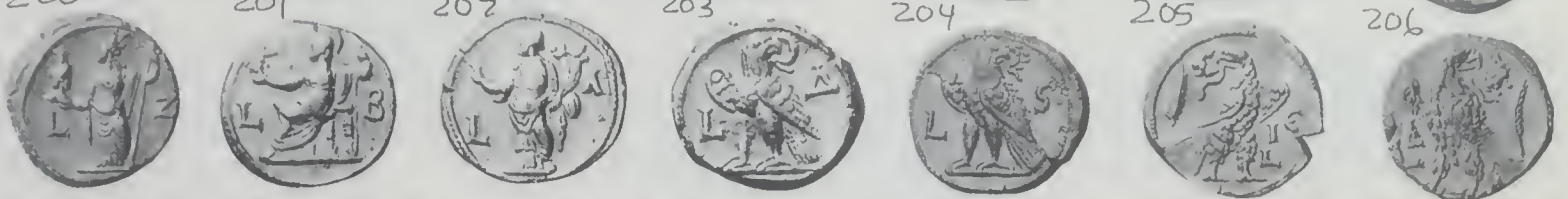
195

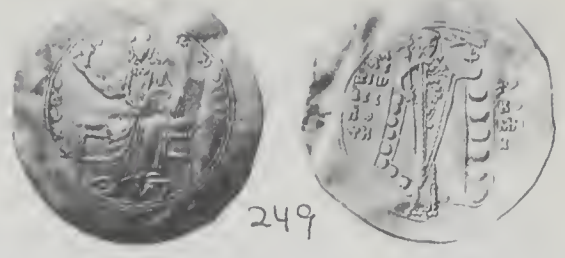
196

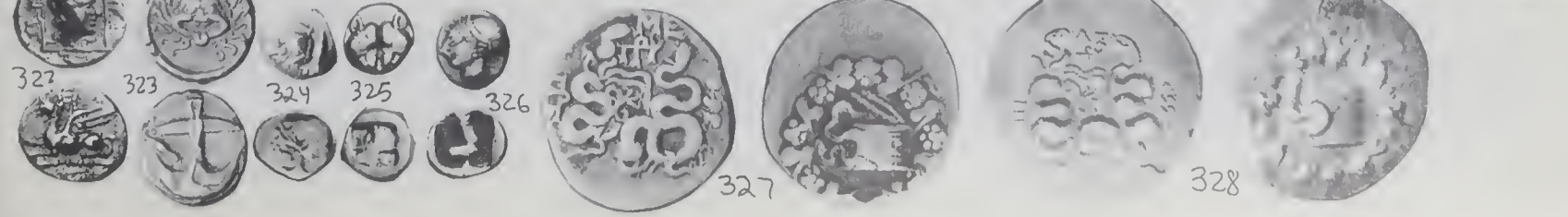
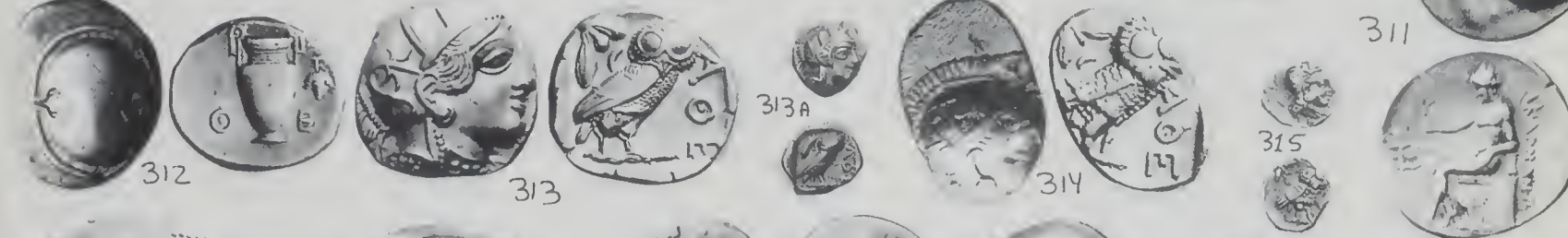
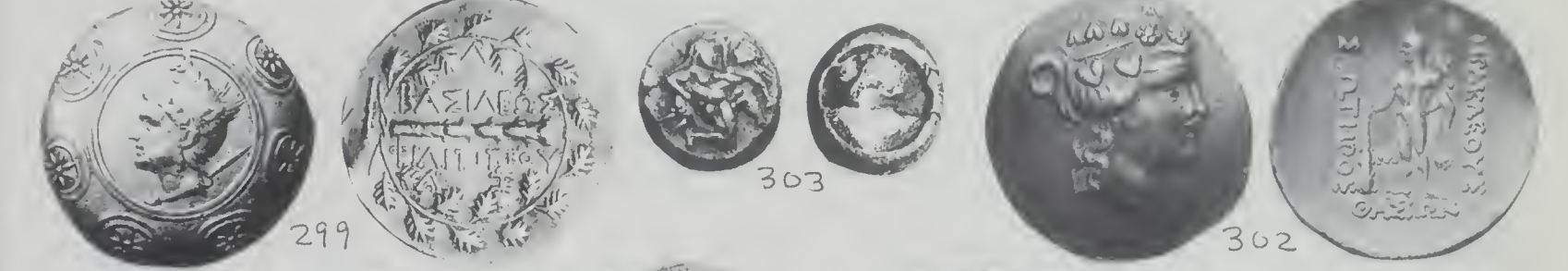
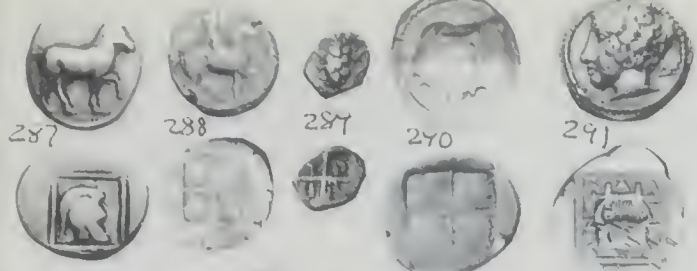
197

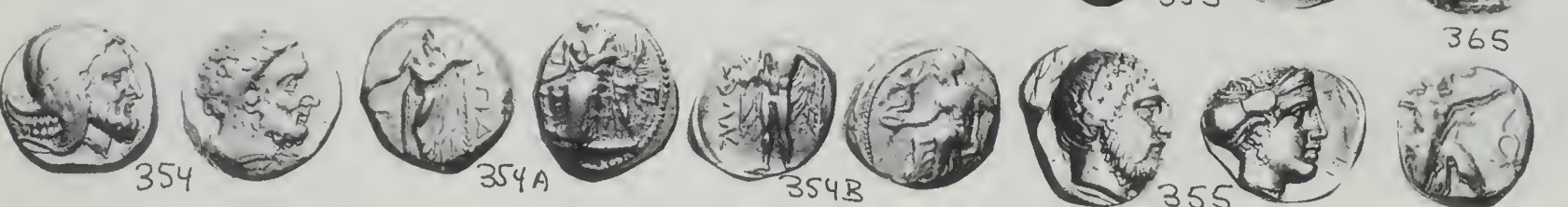
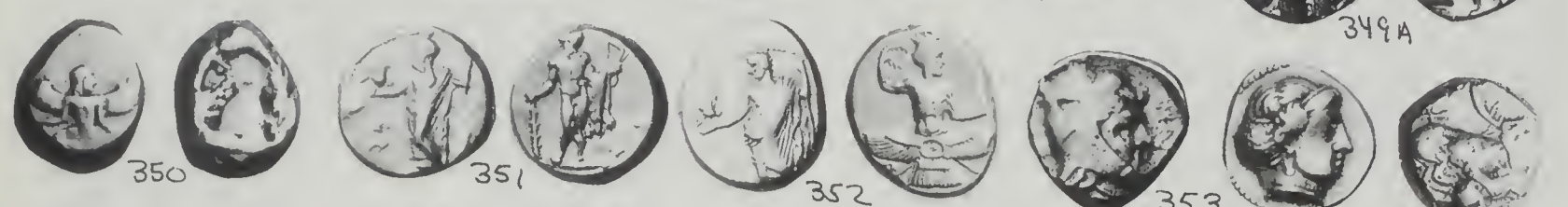
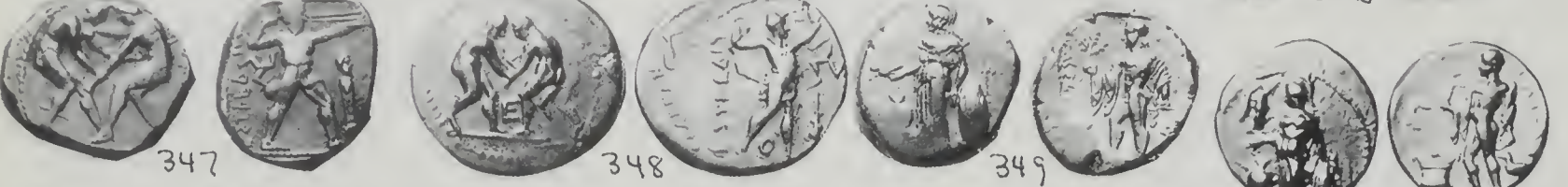
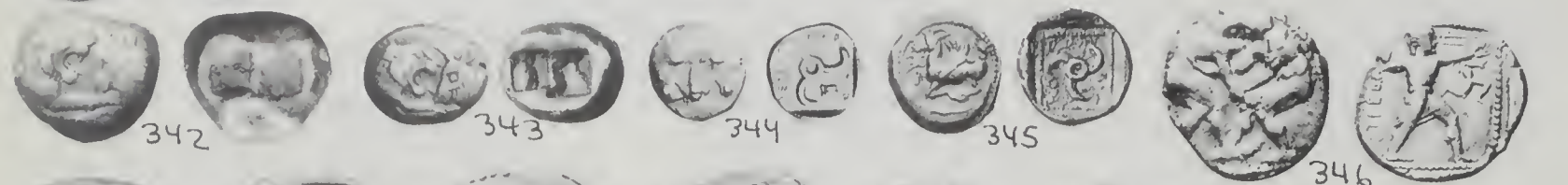
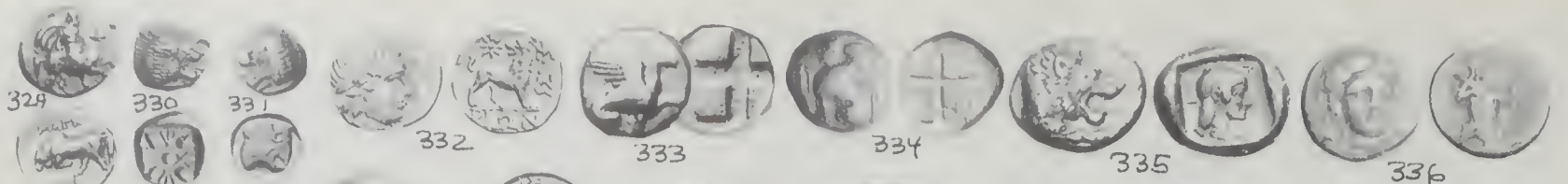
198

199











356A

370

371

372

373

374

375A

375B

375

376

377

377

377

378

379

380

381

383

384

385

387

386

388

389

390

391

392

393

394

395

396

397

398

399

400

401

402

403

404

405

406

407

408

409

410

411

412

413

414

415

416

417

418



419



420



421



422



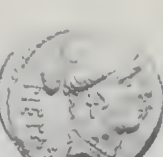
423



424



425



426



427



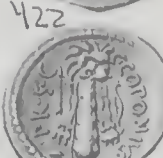
428



429



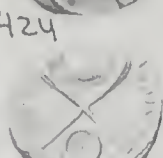
430



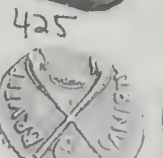
431



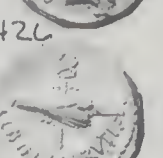
432



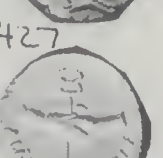
433



434



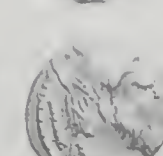
436



437



438



439



440



441



442



443



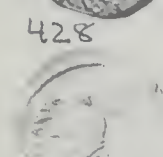
444



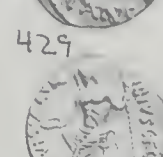
445



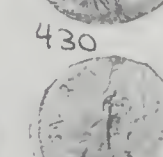
446



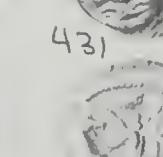
447



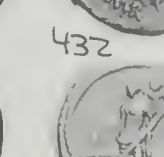
448



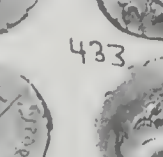
449



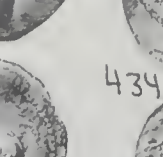
450



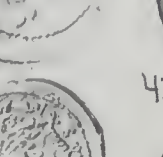
451



452



453



454



455



456



457



458



459



460



461



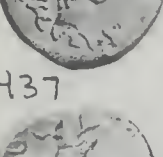
462



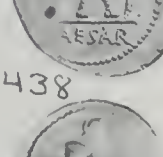
463



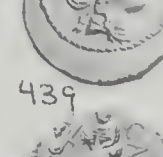
464



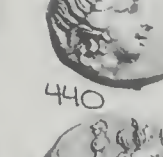
465



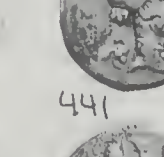
466



467



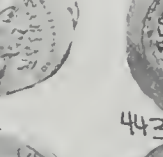
468



469



470



471



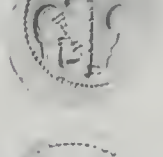
472



473



474



475



476



477



478



479



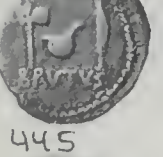
480



481



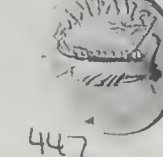
482



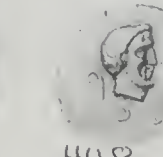
483



484



485



486



487



488



489



490



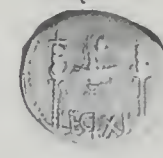
491



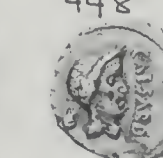
492



493



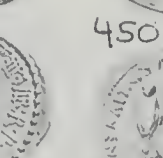
494



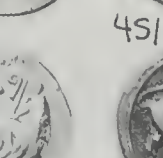
495



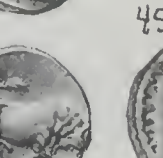
496



497



498

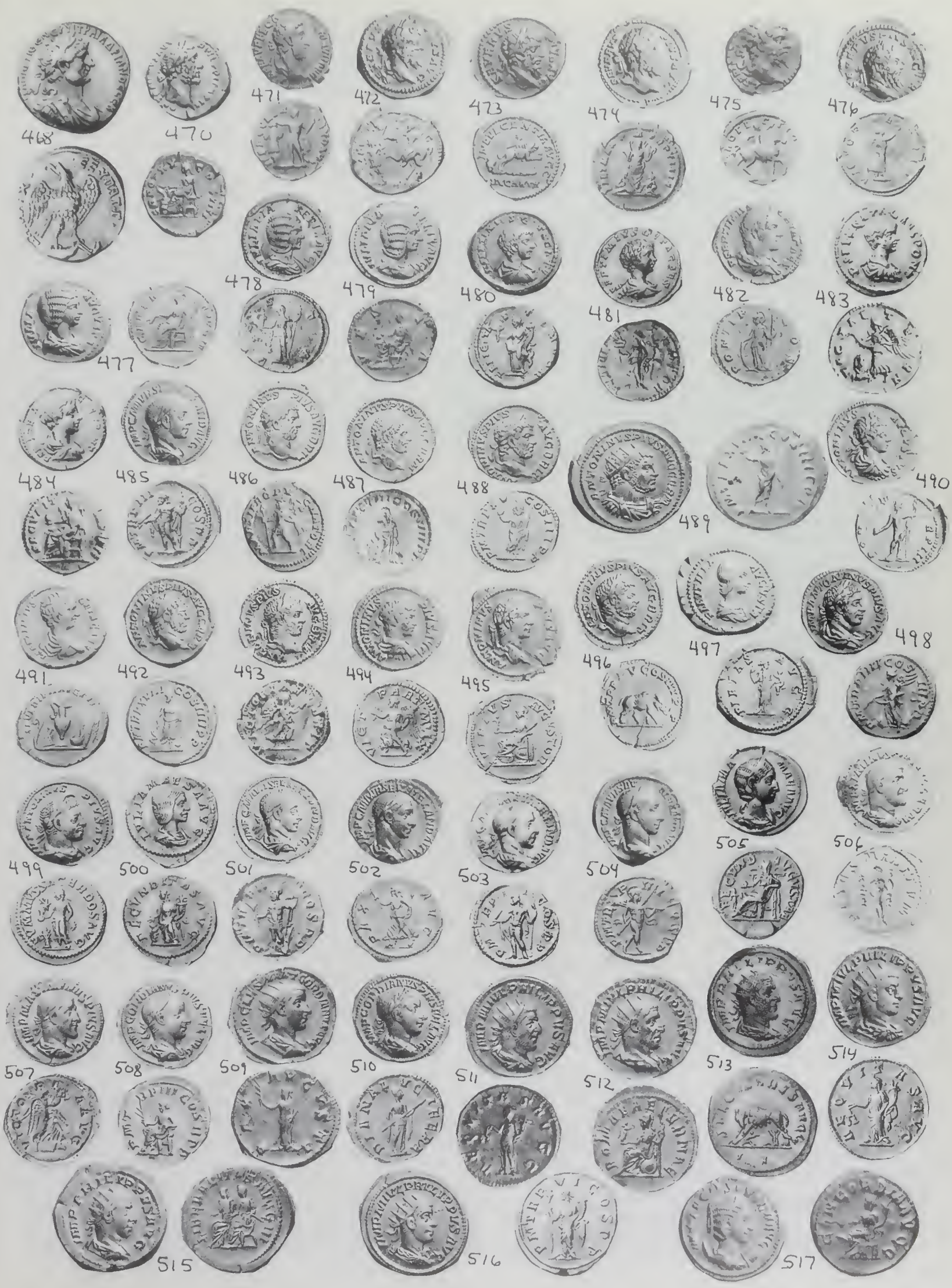


499



500





468

470

471

472

473

474

475

476

477

478

479

480

481

482

483

484

485

486

487

488

489

490

491

492

493

494

495

496

497

498

499

500

501

502

503

504

505

506

507

508

509

510

511

512

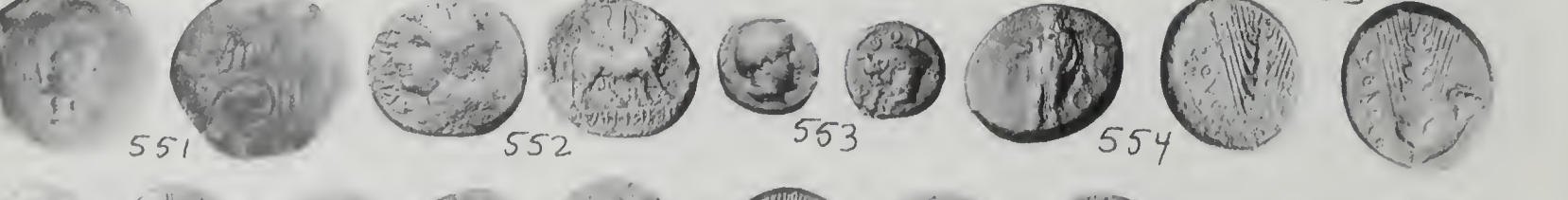
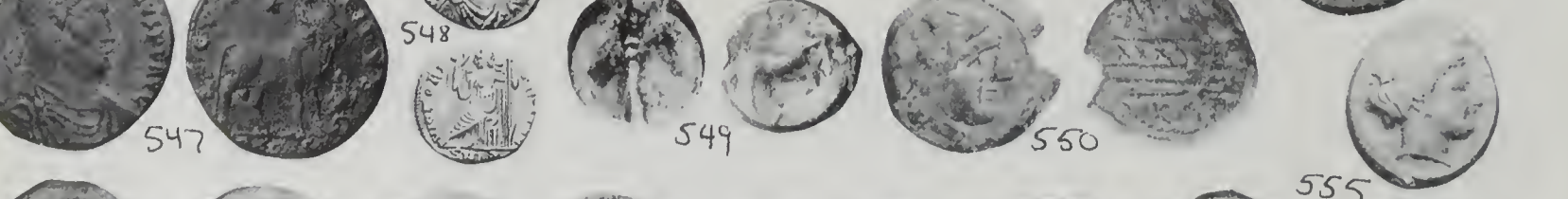
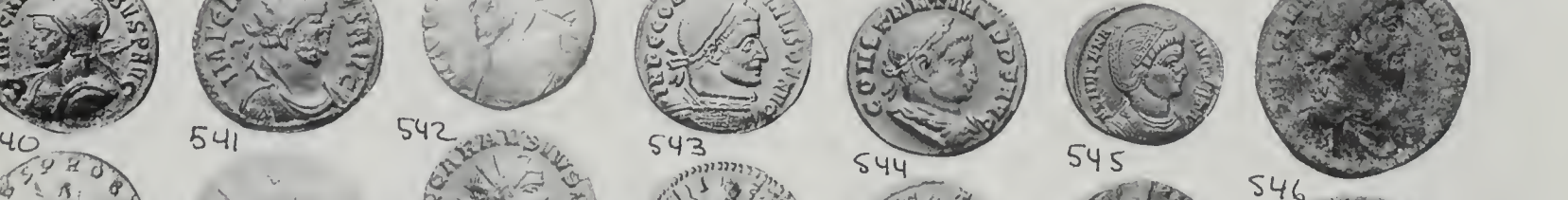
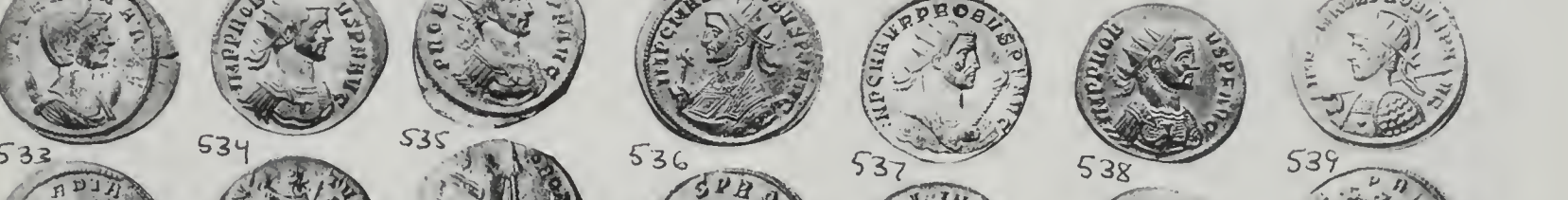
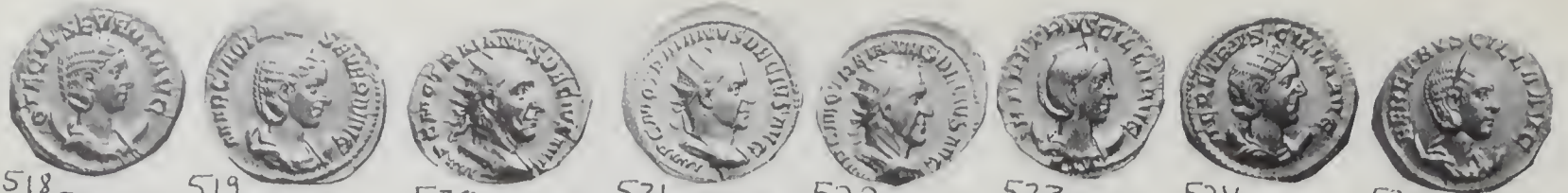
513

514

515

516

517





561

562

563

565

564

566

567

568

571

570

572

578

569

574

574

577

575

579

580

581

582

583

584

585

580

588

590

586

591

592

593

589

595

596

594

596

599

600

597

601

602

603

604

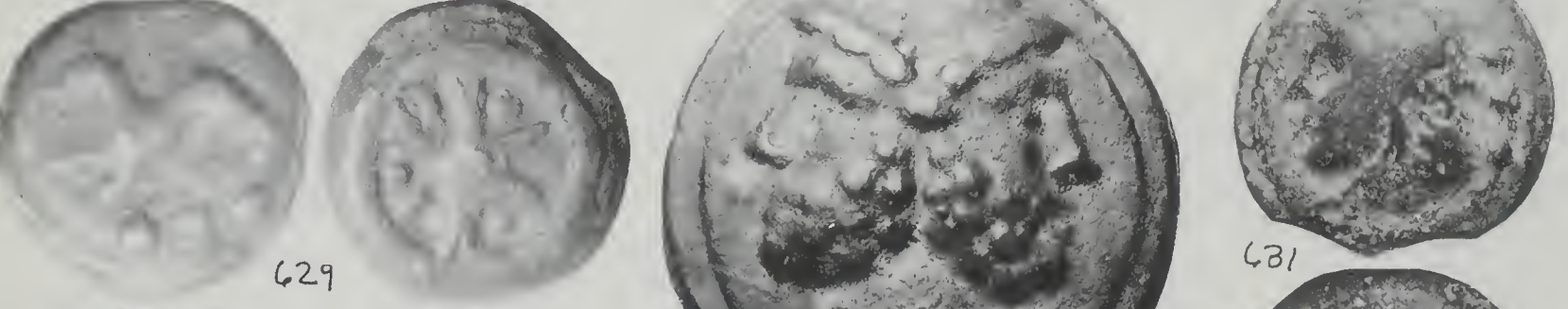
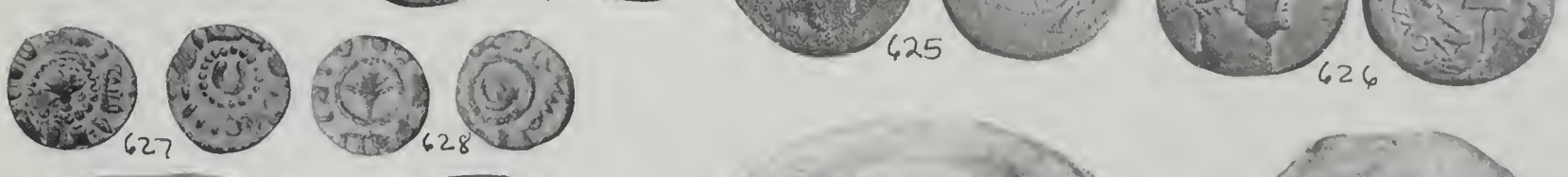
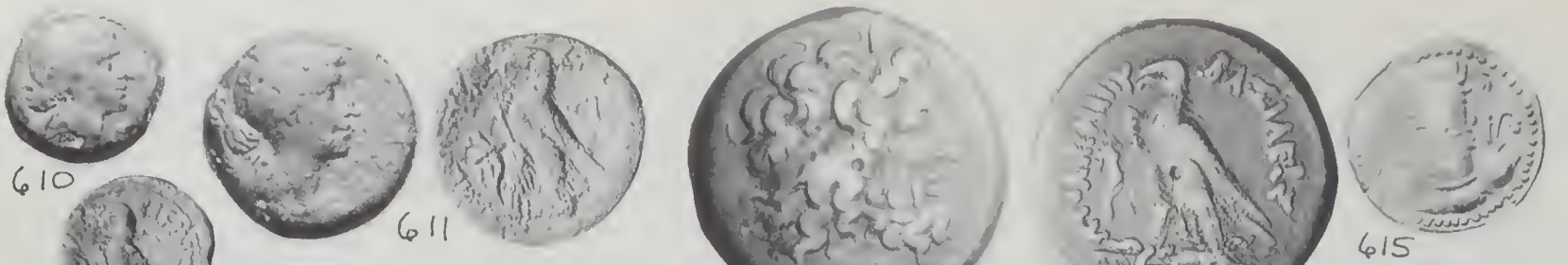
605

606

607

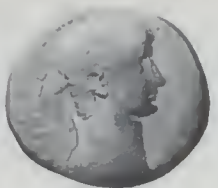
608

609





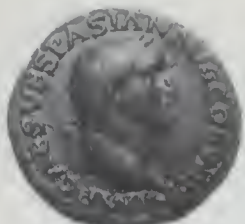
636



637



638



639



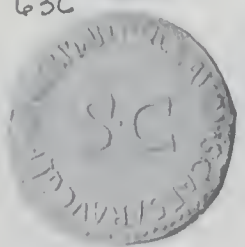
640



641



642



643



644



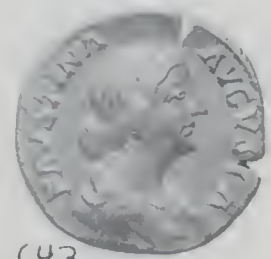
645



646



647



649



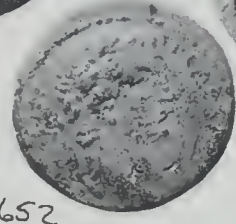
650



651



652



653



654



655



656



657



658



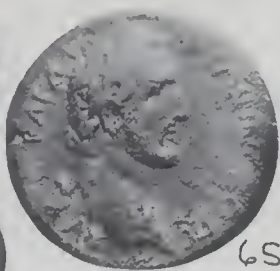
659



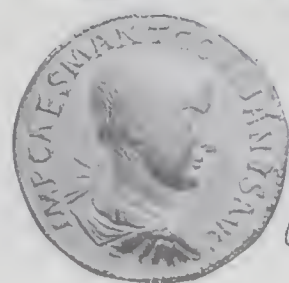
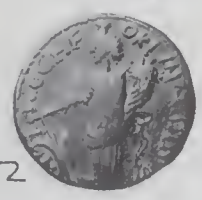
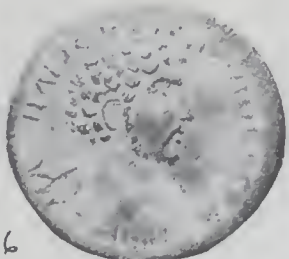
660



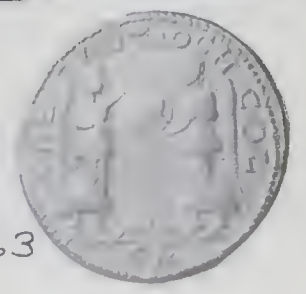
662



663



666





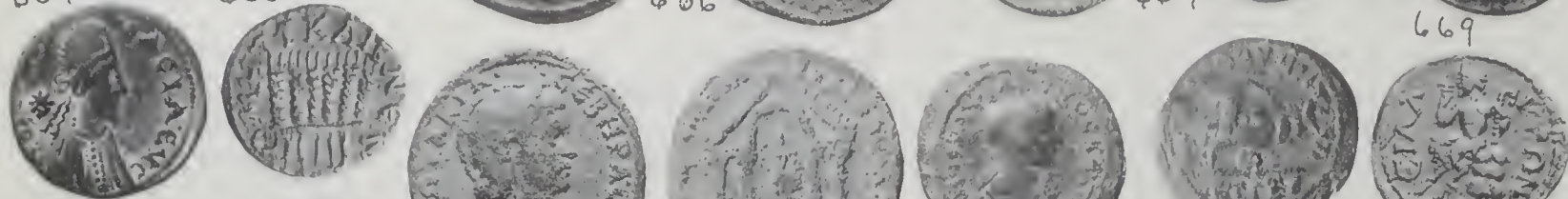
664

665

666

667

669



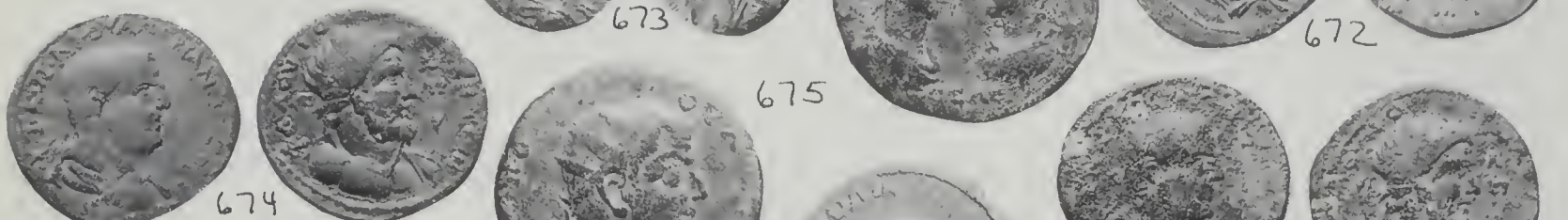
670



671

673

672



674

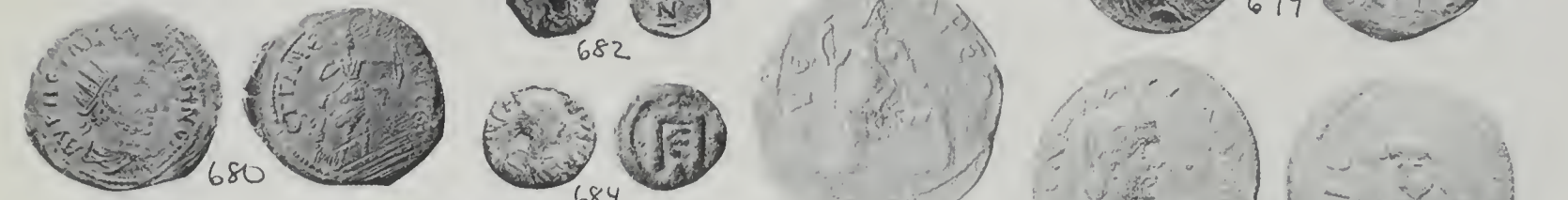
675



677

678

676

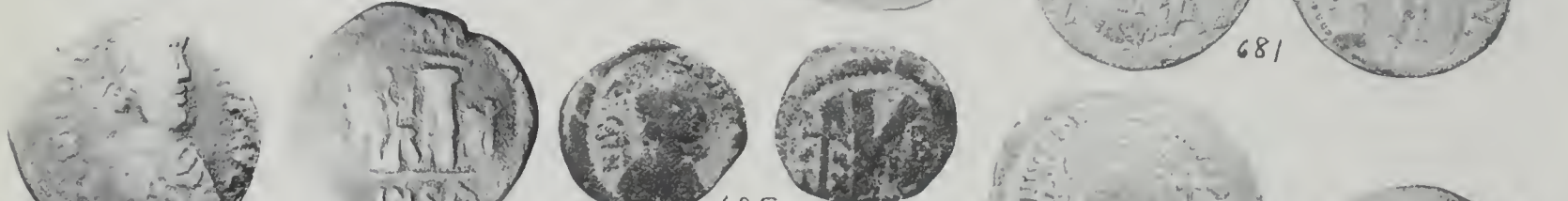


679

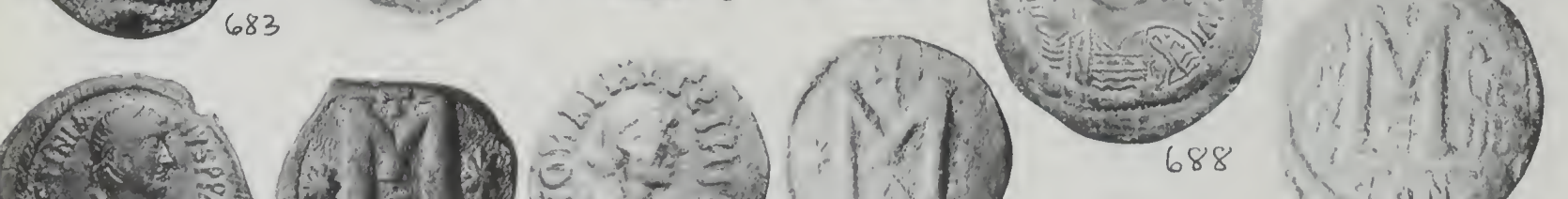
680

682

684

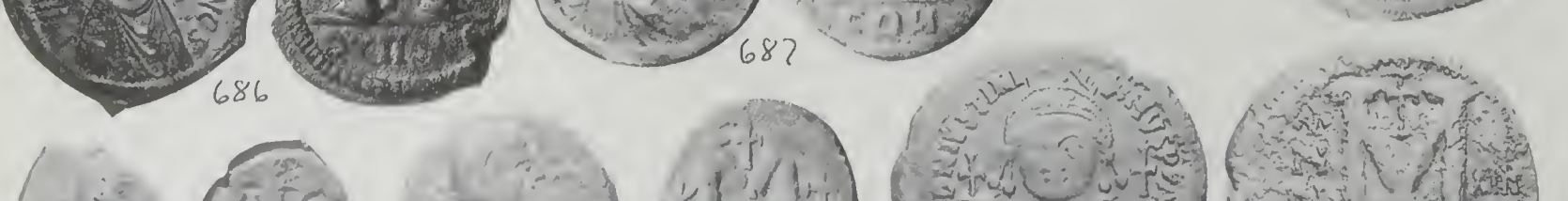


681



683

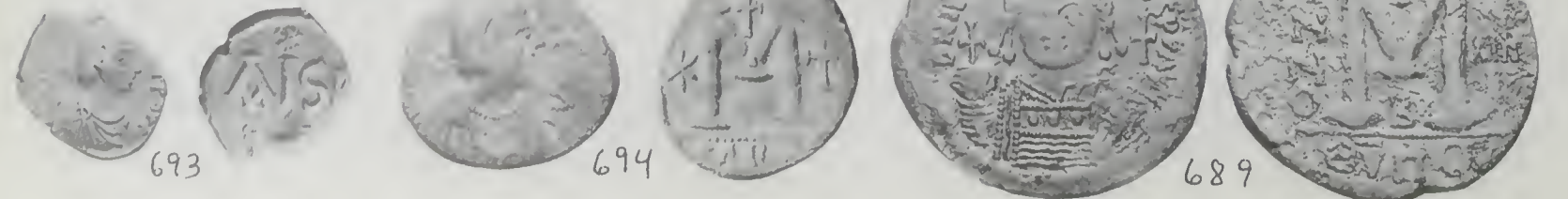
685



686

687

688



693

694

689



690



691



692



695



696



697



698



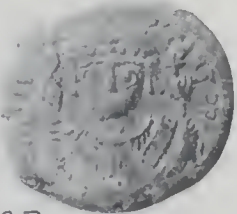
699



701



702



703



704



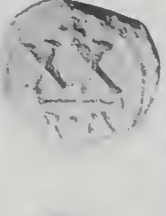
705



706



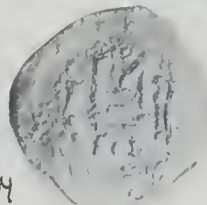
707



708



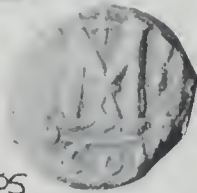
709



710



711



712



713



714



715



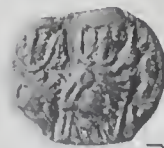
716



717



718



719



720





723



724



725



726



721



727



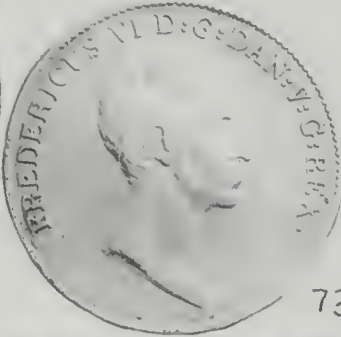
728



730



722



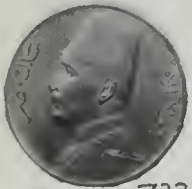
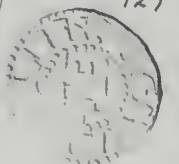
731



729



732



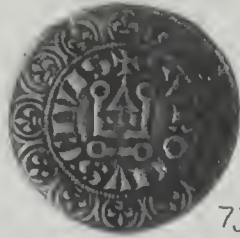
733



734



735



736



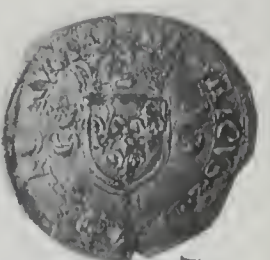
737



738



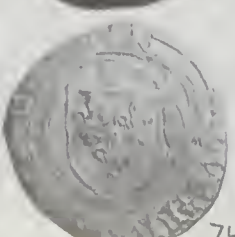
739



743



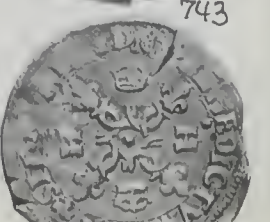
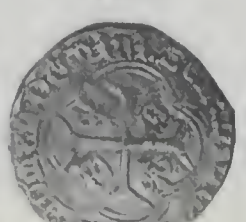
740



741



742







744



745



746



747



748



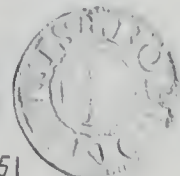
749



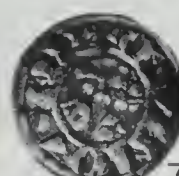
750



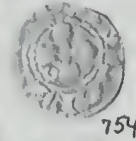
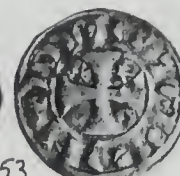
751



752



753



754



756



763



757



758



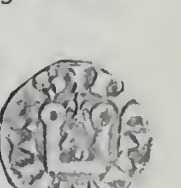
759



760



761



762



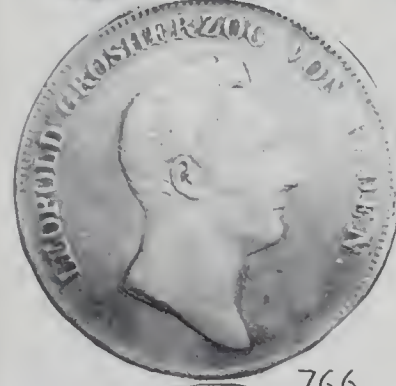
764



765



771



766



767



768



772



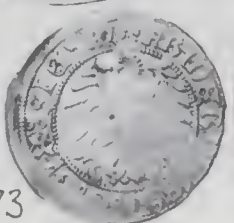
769



770



773



782





774



775



776



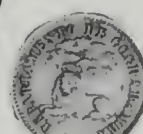
777



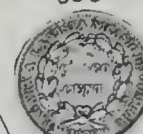
804



805



806



809



814



797



778

779

780

781



783



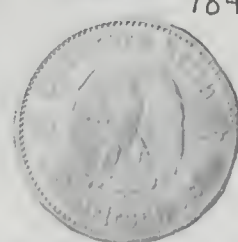
784



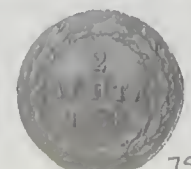
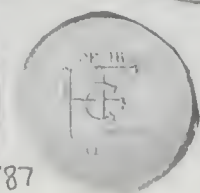
785



786



787



793



795



789





790



791



792



794



798



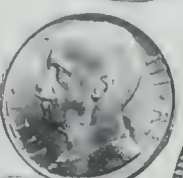
801



802



803



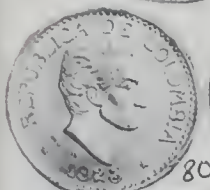
799



807



800



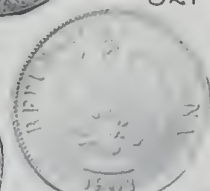
808



812



811



821



815



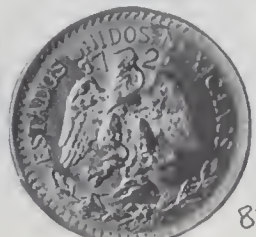
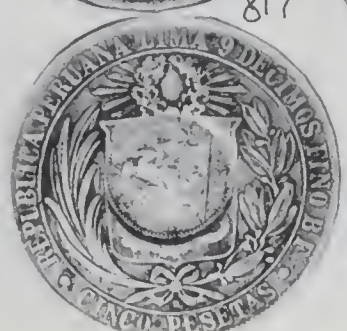
817



818



828



824



827





819



820



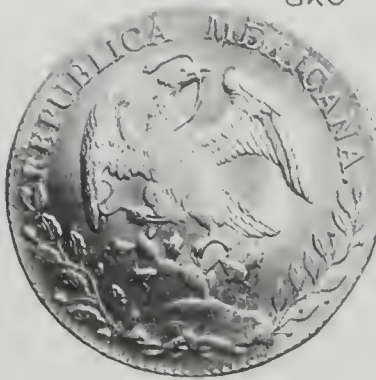
822



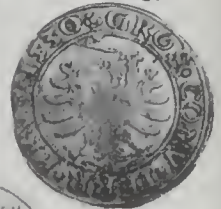
823



826



833



825



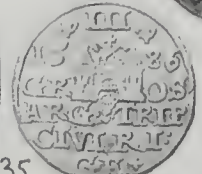
837



840



835



834



836



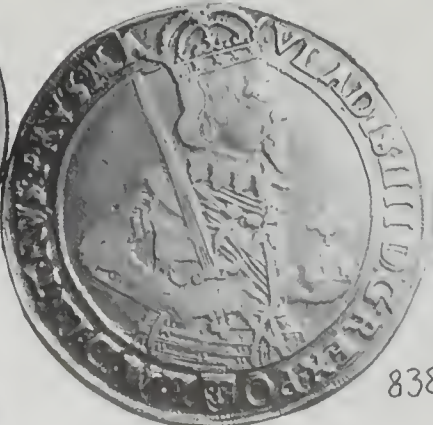
831



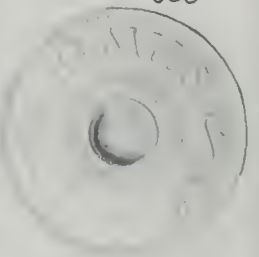
830



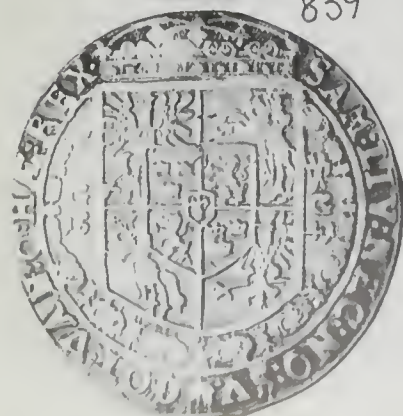
839



838



832



813

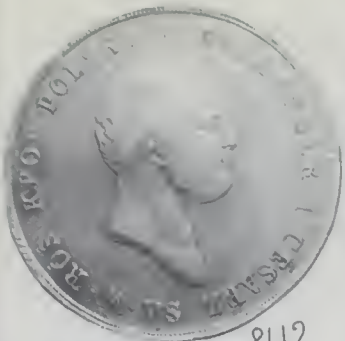


796



829





842



843



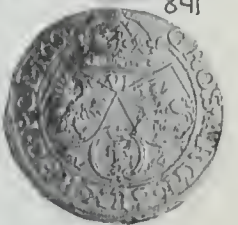
844



845



841



843-A



846



847



848



849



850



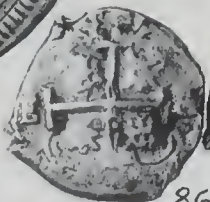
872



851



852



861



868



854



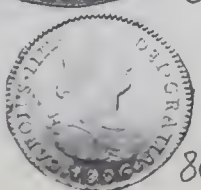
856



853



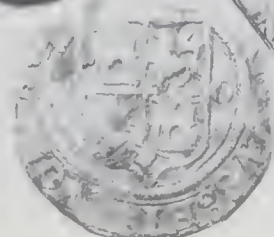
855



867



869



857





862



863



864



865



873



866



870



860



874



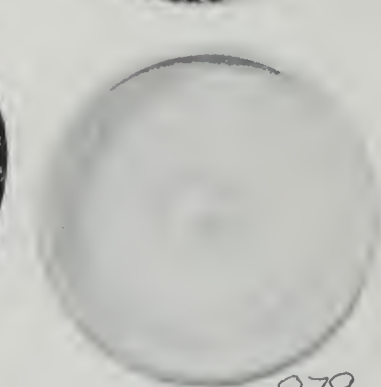
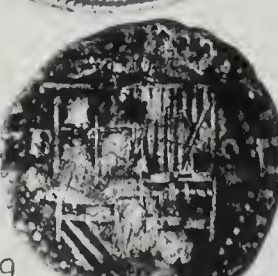
871



858



859

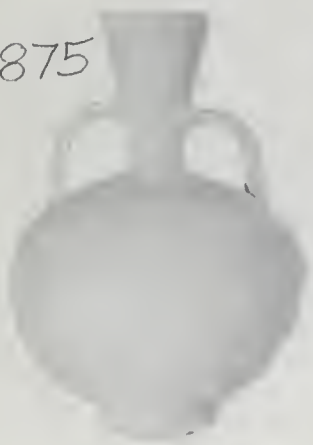


879

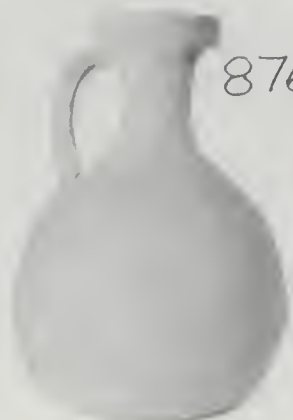


887

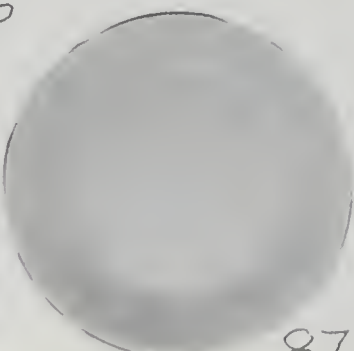
875



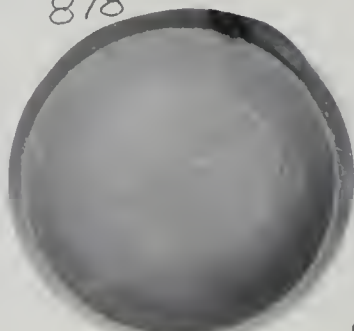
876



877

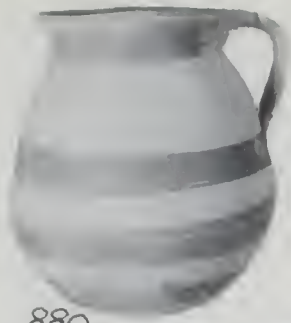


878

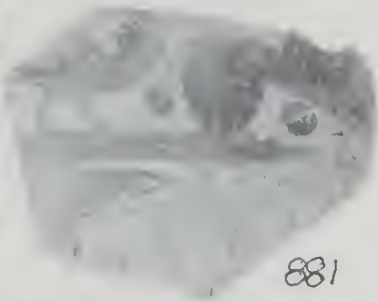


886





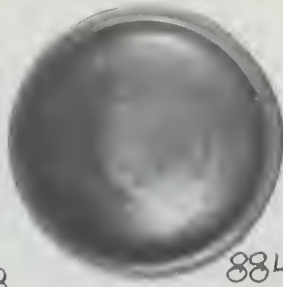
880



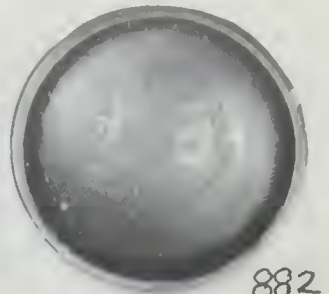
881



883



884



882



885



888



889



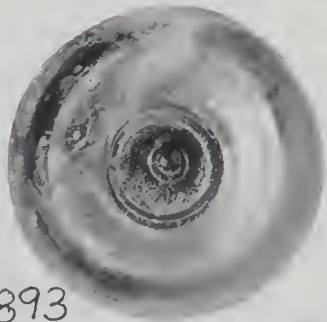
890



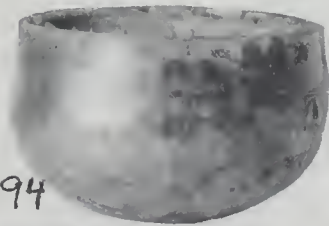
892



891



893



894



895

896



897

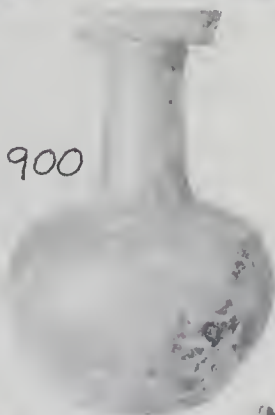


898

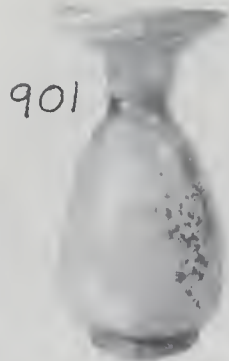
ROMAN PERIOD  
6 B.C. - 476 A.D.



899



900

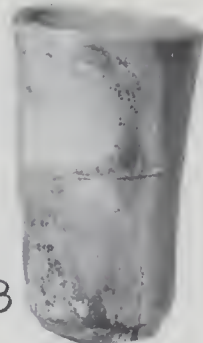


901



902

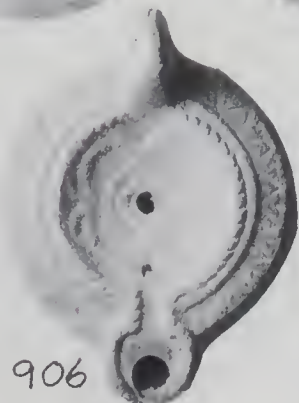
903



904



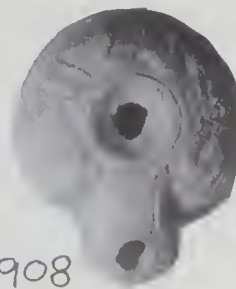
905



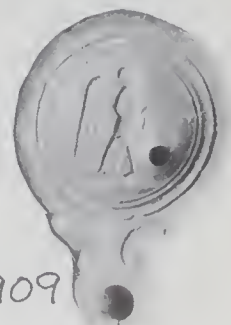
906



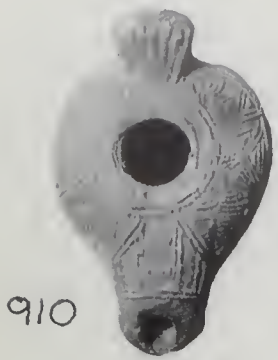
907



908



909



910



911



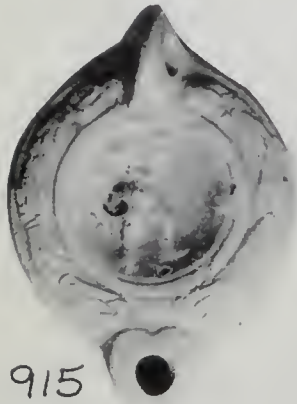
912



913



914



915



916



917



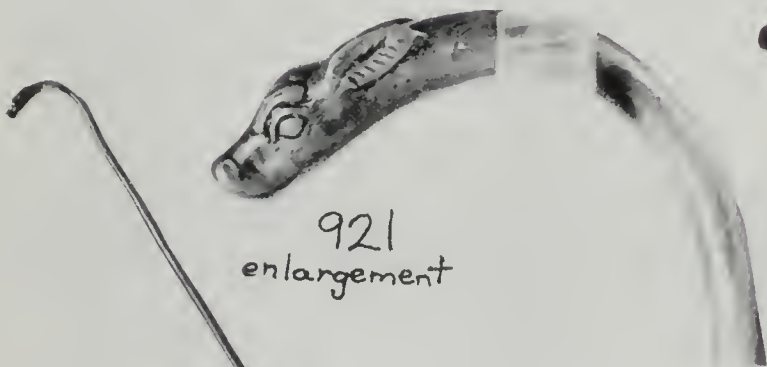
918



919



920



921  
enlargement

921



922



923



924



925



926







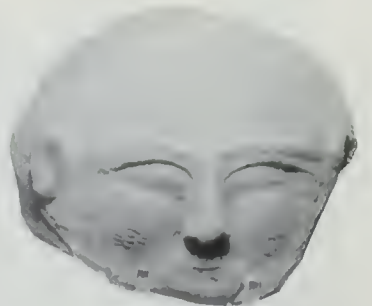
930



929



928



939



932



937  
Front



931



937  
Back



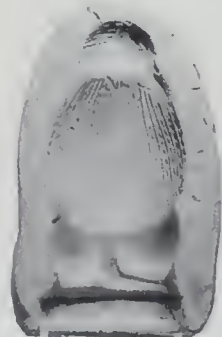
933



934



935



936



944



938



945



940



941



943

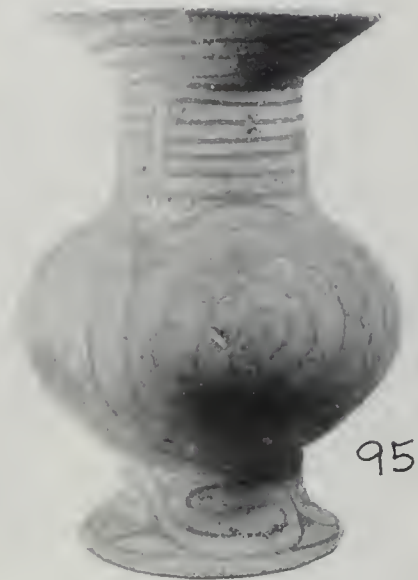
942



946



953



954

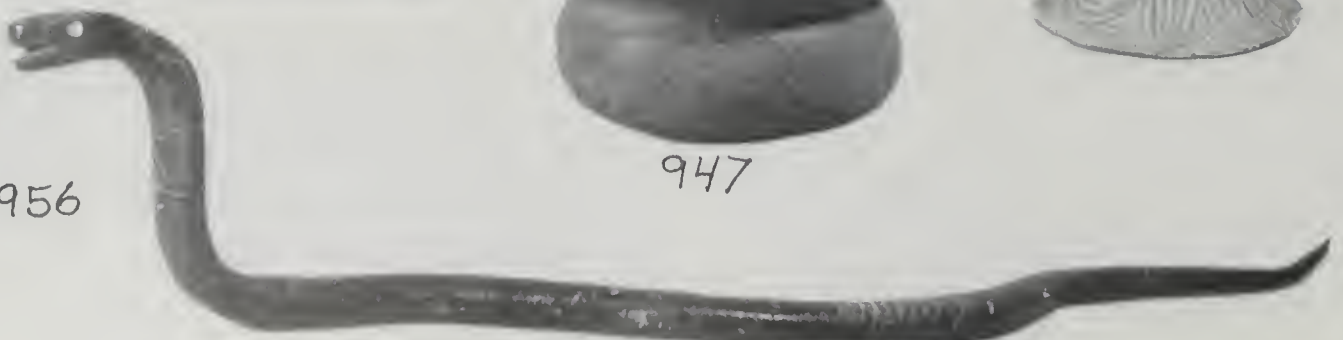


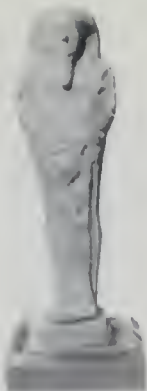
955



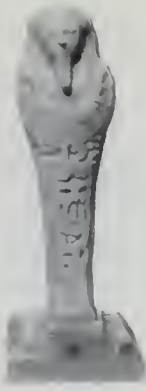
947

956





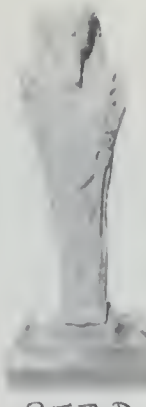
957A



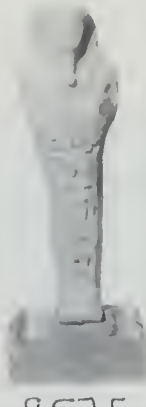
957B



967C



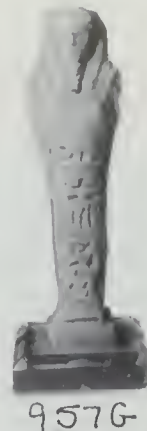
957D



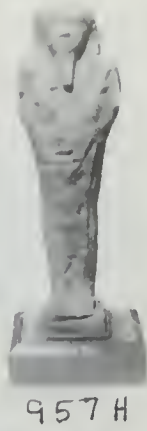
957E



957F



957G



957H



948



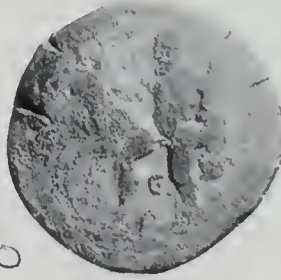
950



951



218



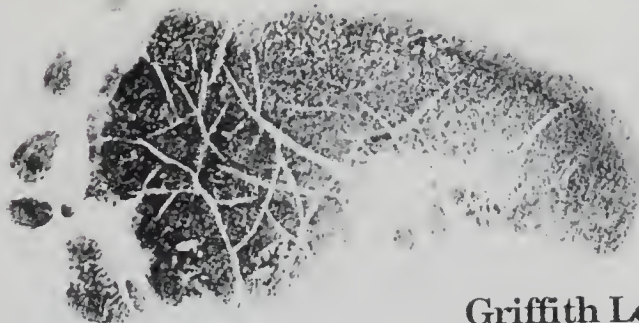
120



952



949



**Griffith Lee Legler**

5 lbs. 15 ounces - 20 1/2" long

Born: October 22, 1990

He will be filling your order in the year 2011

>>> *Congratulations Lisa and Lee* <<<

LOT  
# 958

A

B

C

D

E

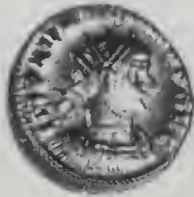
F

G

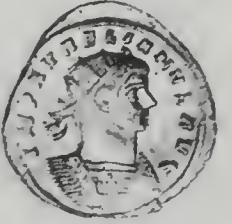
1.



2.



3.



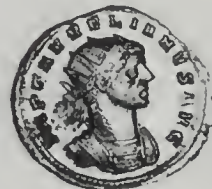
4.



5.



6.



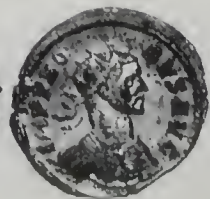
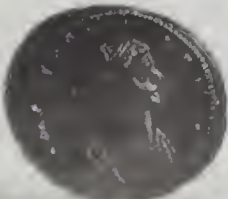
7.



8.



9.



LOT  
# 958

A B C D E F G

1.  
2.  
3.  
4.  
5.  
6.  
7.  
8.  
9.





PANTIKAPAION  
 in the CRIMEA  
 SCYTHIAN STYLE  
 320 BC  
 GOLD STATER  
 8.53g



LOT # 959

Quote from G. K. Jenkins "Ancient Greek Coins", New York, 1972, pages 120 and 125

The Black Sea had been an important area of Greek colonization by Milesians and others, and numerous Greek cities were ranged around its shores. The importance of the agriculture of this region to the Greeks of the Aegean has been mentioned above; but there was also gold - so prominent in the rich burial-treasures of the local Scythian rulers - and this was extracted perhaps from as far away as the Urals, anyway from a region remote enough for Herodotes to repeat that the Black Sea gold was purloined from the griffins by the one-eyed Arimaspeans. On the gold coins of the city of Pantikapaion in the Crimea we see the griffin itself with its horned lion's head, and it stands on a great ear of corn, as if to allude to both the great sourced of wealth of this region. But it is the obverses of the coins which are the truly impressive feature; the head of Pan, used as the punning device for the city's name, as it appears on staters of about 350 BC, is of the purest Greek style, with pointed ears, snub nose and unkempt hair. One of these heads is in profile, the other in a semi-facing view excellently conceived. These staters were first minted on a standard somewhat heavier than the Attic but later the normal Attic weight came in. We must note too the remarkable way in which a Scythian artist takes over the Greek design, even adding to the head of wreath of vine leaves, but adapting the facial forms to the stylization characteristic of the splendid gold objects of Scythian art - a fruitful mixture of styles which is brilliant in a semi-barbaric way. The earlier staters of Pantikapaion were conspicuous in the hoard found at Prinkipo on the Sea of Marmara, along with gold coins of Philip and of Lampsakos and the ubiquitous electrum of Kyzikos, an eloquent testimony to the great trade routes of the Black Sea area.

The only other coin we can find on the 8.53 weight standard is the specimen in the British Museum. We believe our specimen came from the same necklace as the BMC one. It has the same minor scratches and the same triangular marks from mounting. Our coin came to us from a family that imigrated from the Crimea several generations ago and brought this coin with them at that time. To this point we know only of 2 specimens though it is likely that there are a few more.

Fixed price. Near Mint State . . . . . 30,000

LOT  
#960



